

INSTALLATION INSTRUCTIONS

PERFORMANCE SCONCE 111, 113 AND 114

IMPORTANT READ ALL INSTRUCTIONS BEFORE PERFORMING ANY WORK.

BE SURE ALL POWER IS OFF PRIOR TO INSTALLING LUMINAIRE.

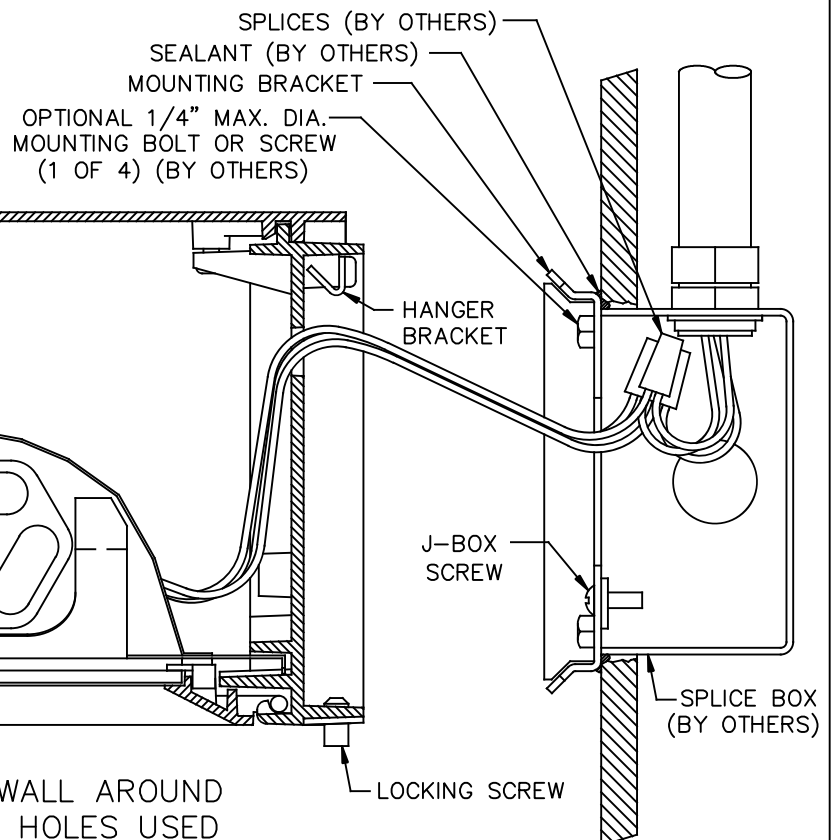
WARNING: LUMINAIRE MUST BE GROUNDED IN ACCORDANCE WITH APPROPRIATE CODES. FAILURE TO DO SO MAY RESULT IN SERIOUS INJURY.

STANDARD INSTALLATION

NOTE: MOUNTING BRACKET MAY BE SECURED TO WALL WITH UP TO 1/4" DIA. BOLTS OR SCREWS (BY OTHERS).

STRUCTURAL MEMBERS MUST BE PRESENT IN WALL TO ACCEPT BOLTS OR SCREWS.

111, 113 or 114 SHAPE



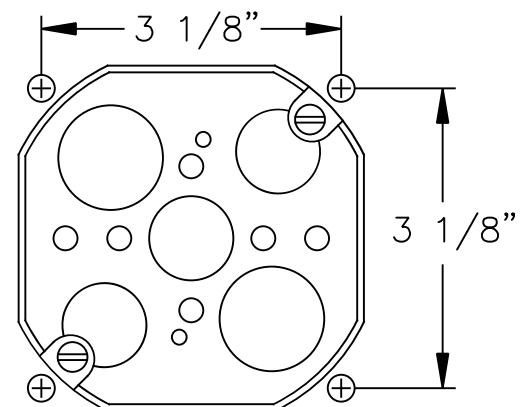
1. APPLY A BEAD OF SEALANT ON WALL AROUND SPLICE BOX OPENING AND AROUND HOLES USED FOR OPTIONAL MOUNTING BOLTS OR SCREWS.

WHEN USING A 4" OCTAGONAL BOX (SHOWN), FILL GAP BETWEEN WALL OPENING AND SPLICE BOX WITH SEALANT.

APPLY SEALANT TO THE TOP INSIDE CORNERS OF THE MOUNTING BRACKET.

2. PLACE MOUNTING BRACKET OVER SPLICE BOX AND SECURE WITH J-BOX SCREWS. FOR ADDITIONAL SECURITY, BOLTS OR SCREWS UP TO 1/4" DIAMETER MAY BE USED.

3. MAKE ELECTRICAL CONNECTIONS. FIXTURE LINE TO SUPPLY LINE, COMMON TO COMMON AND GROUND TO GROUND.



MOUNTING PATTERN FOR
OPTIONAL BOLTS

4" OCTAGONAL BOX (BY OTHERS)
SHOWN FOR REFERENCE

INSTALLATION INSTRUCTIONS

PERFORMANCE SCNCE 111, 113 AND 114

4. PLACE SPLICES AND EXCESS WIRE IN SPLICE BOX. CAREFULLY ENGAGE HANGER BRACKET TO MOUNTING BRACKET BEING CAREFUL NOT TO PINCH WIRES. ALLOW FIXTURE TO REST AGAINST WALL. TIGHTEN LOCKING SCREWS.
5. UNSCREW LENS FRAME SCREWS, OPEN FRAME, INSTALL LAMP,CLOSE AND SECURE FRAME BEING CAREFUL NOT TO OVER TIGHTEN THE SCREWS.



© 2016 Philips Lighting Holding B.V. All Rights Reserved.
www.philips.com/luminaires

443561012970/A817191 REV. B

Page 2 of 2

Philips Lighting North America
Corporation
200 Franklin Square Drive,
Somerset, NJ 08873, USA

Philips Lighting Canada Ltd.
281 Hillmount Road,
Markham ON, Canada L6C 2S3