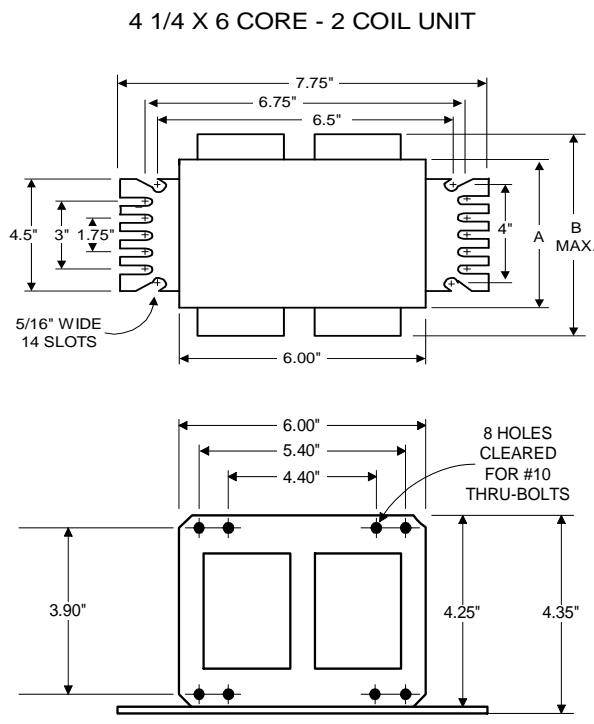


PHILIPS ADVANCE

High Pressure Sodium Lamp Ballast

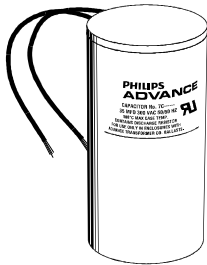
Catalog Number 71A85F5
For 600W S106
60 Hz CWA
Status: Active

DIMENSIONS AND DATA



	277	347	480		
INPUT VOLTS					
CIRCUIT TYPE	CWA				
POWER FACTOR (min)	90%				
REGULATION					
Line Volts	±10%				
Lamp Watts	WITHIN TRAPEZOID				
LINE CURRENT (Amps)					
Operating.....	2.50	2.00	1.43		
Open Circuit.....	1.40	1.10	0.75		
Starting.....	2.15	1.70	1.20		
UL TEMPERATURE RATINGS					
Insulation Class	H(180°C)				
Coil Temperature Code	1029				
MIN. AMBIENT STARTING TEMP.	-40F or -40C				
NOM. OPEN CIRCUIT VOLTAGE	228				
INPUT VOLTAGE AT LAMP DROPOUT.....	140	160	250		
INPUT WATTS	665				
RECOMMENDED FUSE (Amps).....	7	5	4		
CORE and COIL					
Dimension (A)	3.12				
Dimension (B)	4.90				
Weight (lbs.)	23				
Lead Lengths	12"				
CAPACITOR REQUIREMENT					
Microfarads	64.0				
Volts (min.)	280				
Fault Current Withstand (amps)					
60 Hz TEST PROCEDURES (Refer to Advance Test Procedure for HID Ballasts - Form 1270)					
High Potential Test (Volts)					
1 minute	2000				
2 seconds	2500				
Open Circuit Voltage Test (Volts)	205-250				
Short-Circuit Current Test (Amps)					
Secondary Current	7.40-9.00				
Input Current.....	1.30-2.00	1.10-1.60	0.80-1.20	-	-

Capacitor: 7C640S28RA



Capacitance: 64
Dia/Oval Dim: 2.05
Height: 5
Temp Rating: 105°C

Wiring Diagram:

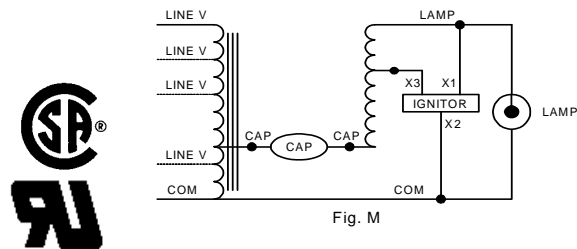
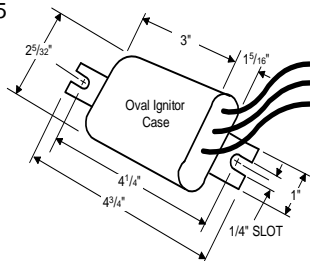


Fig. M

Ordering Information

Order Suffix	Description
--------------	-------------

Ignitor: LI561-H5



Ballast to Lamp Distance (BTL) = 5 feet
Temp Rating: 105°C

Data is based upon tests performed by Philips Lighting Electronic N.A. in a controlled environment and representative of relative performance. Actual performance can vary depending on operating conditions. Specifications are subject to change without notice.

Philips Lighting Electronic N.A.

10275 West Higgins Road · Rosemont, IL 60018 · Tel:800-322-2086 Fax:888-432-1882
Customer Support/ Technical Service:800-372-3331 · OEM Support: 866-915-5886

06/26/13