

Instruction Sheet Number **IS:C4TCA2**

Page 1 of 1

For Assembly and Installation of C4TCA2

IMPORTANT

READ AND UNDERSTAND THESE INSTRUCTIONS BEFORE INSTALLING FIXTURE

Retain these instructions for maintenance reference.

CAUTION - SPRING EDGES ARE SHARP TO HOLD REFLECTOR TRIM ASSEMBLY

TAKE CAUTION WHEN HANDLING ADAPTER RING

This fixture is intended for installation in accordance with the National Electrical Code and local regulations. To assure full compliance with local codes and regulations, check with your local electrical inspector before installation. To prevent electric shock, turn off electricity at fuse box before proceeding.

INSTALLATION PROCEDURE FOR C4TCA2 CALCULITE EVOLUTION 4 INCH APERTURE THICK CEILING ADAPTER RING

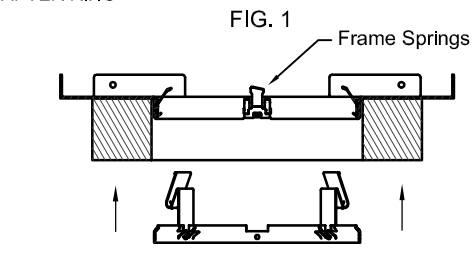
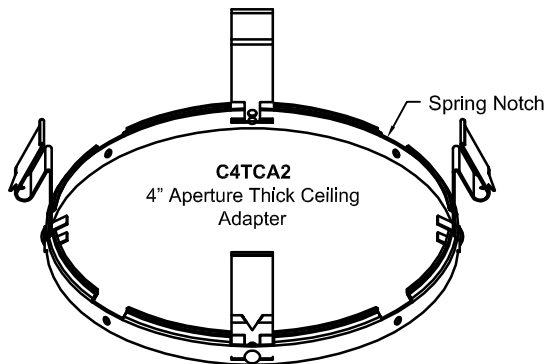


FIG. 2

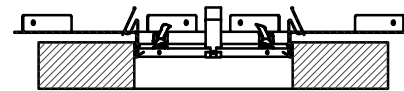
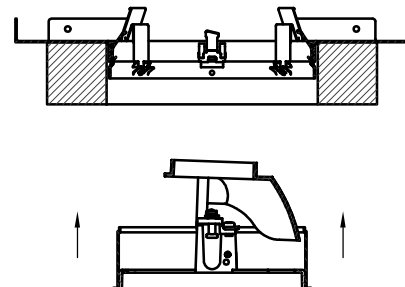


FIG. 3



1. Align spring notch with frame springs.
2. Slowly insert the thick ceiling adapter upward until ring mates flush with the previously installed frame. (Fig.1)
3. Check to make sure springs are fully engaged above the top surface of the frame. (Fig. 2)
4. Install appropriate trim (purchased separately) by inserting into aperture opening. (Fig. 3)
5. See reflector trim spec sheet/inspection sheet for wiring, lamping, and trim installation information.
6. Make vertical/horizontal adjustments if applicable. BE SURE NOT TO DISTURB THE LOCKING OF THE RING established in Step 2.

CAUTION: USE ONLY LAMP WATTAGE AND TYPE AS MARKED ON LUMINAIRE.

Lightolier a Genlyte Company www.lightolier.com
631 Airport Road, Fall River, Ma 02720 (508) 679-8131 Fax (508) 674-4710
We reserve the right to change details of design, materials and finish.
© 2004 Genlyte Group LLC A0408

LIGHTOLIER®