

PHILIPS LIGHTOLIER

Track Lighting

Alcyon LED

Vertical cylinder,
LLAV30, 34W/3000lm



Project: _____
Location: _____
Cat.No: _____
Type: _____
Lamps: _____ Qty: _____
Notes: _____

Alcyon LED Vertical Cylinders are ideal for display, accent and task lighting and offer higher efficiency than incandescent or halogen sources leading to energy savings with no ultraviolet or infrared radiation. Alcyon provides concentrated light which dramatically draws interest to objects and elements in a space.

Fixture

example: LLAV30930ALCW

Series	Lumens	CRI/CCT*	Adapter	Finish	Options
LLAV	30				
LLAV Alcyon LED vertical cylinder	30 34W 3000lm	27 80CRI/2700K 30 80CRI/3000K 40 80CRI/4000K 927 90CRI/2700K 930 90CRI/3000K ¹	— Lightolier H Halo J Juno P Prospec ² See above	WH White AL Alum. BK Black See above	— no options CW CrispWhite ¹

Reflector

example: LLAV12RF

Series	Lumens	Reflector
LLAV	12	
LLAV Alcyon LED vertical cylinder	12 Compatible with 34W/3000lm	RNS 11° Narrow Spot RS 17° Spot RNF 24° Narrow flood RF 36° Flood

Accessories

example: LLAV12AHWH

Series	Finish
LLAV12AH Accessory holder with spring	WH White AL Aluminum BK Black
23SNT6 Compatible snoot	WH White AL Aluminum BK Black
LLAV12 Compatible diffusion filters	SF Soft Focus FR Frosted Etched LS Linear Spread SY Soft Focus

Compatible color filters/gels provided by others

AL4HC Compatible hex cell louver
(matte black)

1. CrispWhite (CW) is only available with 90CRI /
3000K CCT (930).

2. Prospec is only offered in White (WH) and Black (BK).

Mounting

Compatible with all Monopoint, Multipoint, recessed track, suspension track, suspension stems, sloped ceiling adapters as well as Basic, Advent and Radius track systems. Ceiling and horizontal or vertical wall mounted (adapters available for Prospec, Halo, Juno and ConTech).

Electrical

Electronic power supply

Input voltage: 120V, 60Hz
Input power: 34W
Efficacy: 93lm/W (nominal) @ 3000K
High power factor: >0.9
CRI: 80-90 (typical)

Labels

cULus Listed.
5 year warranty.
ENERGY STAR® (pending).



Features

- LED board:** COB LED.
- Integrated housing heat sink:** die-cast aluminum maintains LED junction temperature for minimum 50,000 hr lifetime at 70% lumen maintenance.
- Track attachment fitting:** Integral color in gray, black or white. Molded polycarbonate. Rotates into track and locks into place with the use of push tabs. Located at center of mass to allow for fixture to hang vertically straight on track and with extensions wands and other track accessories.
- Push tab:** Molded polycarbonate. Locks and detaches unit.
- Track adapter housing:** Die-cast aluminum.
- Movable brass contact:** Brass extends for connection to 2nd circuit (Advent track only).
- Pivot mounts:** Allows for 350° horizontal. Vertical rotation of +/- 90° from vertical aim to the floor.
- Driver housing:** Extruded aluminum housing with die-cast aluminum covers.
- Interchangeable optics:** High efficiency metalized coating providing up to 98% total reflectivity for optimal light quality, beam control and punch. Reflector has lens attached which protects reflector finish and LEDs from contamination. Tool-less installation. Reflector sold separately to allow field replaceability.
- Finishes:** Painted with a baked enamel. Contains some powder coated finishes.

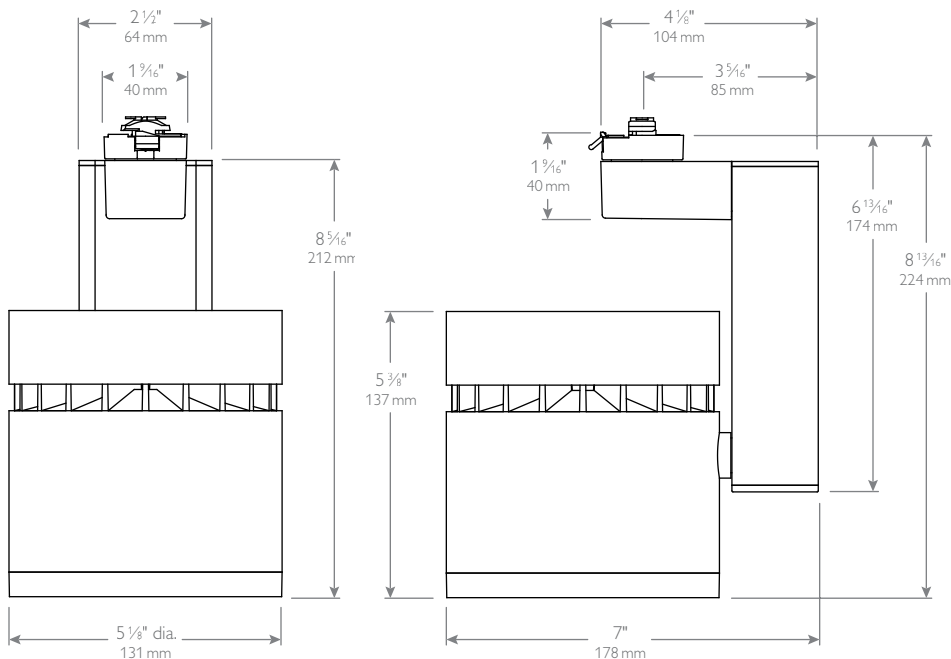
Dimming

Trailing edge (ELV) dimming compatible
SR400RPC120 Philips Controls Sunrise (3.97%)
SELV-300P Lutron Skylark (4.03%)
IPE04 Leviton Decora (4.01%)

LLAV30 Alcyon LED

Vertical Cylinder, 34 W / 3000 lm

Dimensions



	Beam spread (To 50% CBCP)	CBCP	Rated Life (Hrs.)
LLAV12RNS Narrow Spot	11°	47,724	50,000
LLAV12RS Spot	17°	23,751	50,000
LLAV12RNF Narrow Flood	24°	20,304	50,000
LLAV12RF Flood	36°	7,653	50,000

Accessories



Alcyon LED track lighting offers a full range of high performance accessories for tinting, coloring and shaping of the light beam. All accessories are designed to attach easily. A complete accessory consists of a size and series suffix.

Components

1. Housing
2. Reflector
3. Accessory holder
4. Accessory spring
5. Diffusion filters
6. Hex cell louver
7. Snoot
8. Aperture ring

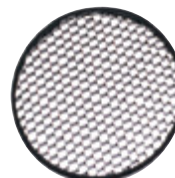
Diffusion/special filters

LLAV12 = 4-3/4" dia.

- LS** Linear spread lens
- FR** Frosted etched lens
- SF** Solite soft focus lens
- SY** Soft Focus lens

Hex cell louvers

AL4HC = 4-3/4" dia.



Only available in matte black

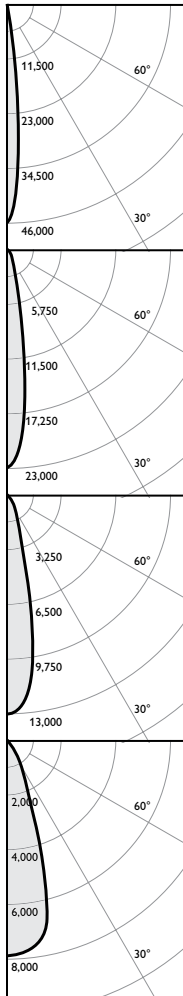
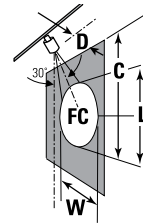
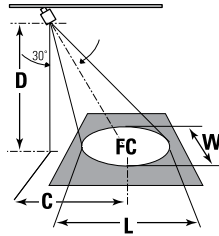
LLAV30 Alcyon LED

Vertical Cylinder, 34 W / 3000 lm

Aiming angles

L and **W** are the outer points where the candle power drops to 50% of the maximum. **FC** are the initial footcandles at the center of the beam. Data shown is for 3000K, for 2700K multiply FC by 0.91.

L Beam length
D Distance
W Beam Width
A Aiming Angle
FC Footcandles
C Distance to center beam
CBCP Center Beam Candle Power.



Track: LLAV3030WH Reflector: LLAV12RNS

CCT¹: 3000K
Output lumens: 3214 lms
Input watts²: 34.4 W
Efficacy: 93.4 lm/w
CRI: 80 min
CBCP: 45,955 cd
Beam Angle: 11°
Report no³: 1235GFR

Track: LLAV3030WH Reflector: LLAV12RS

CCT¹: 3000K
Output lumens: 3170 lms
Input watts²: 34.4 W
Efficacy: 92.2 lm/w
CRI: 80 min
CBCP: 22,739 cd
Beam Angle: 17°
Report no³: 1236GFR

Track: LLAV3030WH Reflector: LLAV12RNF

CCT¹: 3000K
Output lumens: 3160 lms
Input watts²: 34.3 W
Efficacy: 92.1 lm/w
CRI: 80 min
CBCP: 13,032 cd
Beam Angle: 24°
Report no³: 1234GFR

Track: LLAV3030WH Reflector: LLAV12RF

CCT¹: 3000K
Output lumens: 3172 lms
Input watts²: 34.3 W
Efficacy: 92.5 lm/w
CRI: 80 min
CBCP: 7,818 cd
Beam Angle: 36°
Report no³: 1233GFR

Narrow Spot

30° Horizontal Aiming

Distance		Beam		
D	C	F.C.	L	W
6	3.5	829	1.5	1.3
8	4.6	466	2.1	1.8
10	5.8	298	2.6	2.2
12	6.9	207	3.1	2.7

Spot

30° Horizontal Aiming

Distance		Beam		
D	C	F.C.	L	W
6	3.5	410	2.4	2.1
8	4.6	231	3.2	2.8
10	5.8	148	4.0	3.5
12	6.9	103	4.8	4.1

Narrow Flood

30° Horizontal Aiming

Distance		Beam		
D	C	F.C.	L	W
6	3.5	235	3.5	2.9
8	4.6	132	4.6	3.9
10	5.8	85	5.8	4.9
12	6.9	59	6.9	5.9

Flood

30° Horizontal Aiming

Distance		Beam		
D	C	F.C.	L	W
6	3.5	141	5.4	4.5
8	4.6	79	7.2	6.0
10	5.8	51	9.0	7.5
12	6.9	35	10.8	9.0

30° Vertical Aiming

Distance		Beam		
D	C	F.C.	L	W
2	3.5	1436	1.6	0.8
3	5.2	638	2.4	1.2
4	6.9	359	3.2	1.5
5	8.7	230	4.0	1.9

30° Vertical Aiming

Distance		Beam		
D	C	F.C.	L	W
2	3.5	711	2.6	1.2
3	5.2	316	3.8	1.8
4	6.9	178	5.1	2.4
5	8.7	114	6.4	3.0

30° Vertical Aiming

Distance		Beam		
D	C	F.C.	L	W
2	3.5	407	3.9	1.7
3	5.2	181	5.9	2.6
4	6.9	102	7.9	3.4
5	8.7	65	9.8	4.3

30° Vertical Aiming

Distance		Beam		
D	C	F.C.	L	W
2	3.5	244	7.6	2.6
3	5.2	109	11.4	3.9
4	6.9	61	15.2	5.2
5	8.7	39	19.0	6.5

1. Correlated Color Temperature within specs as defined in ANSI_NEMA_ANSI C78.377-2008: Specifications for the Chromaticity of Solid State Lighting Products.
2. Wattage controlled to within +/- 5%.
3. Tested using absolute photometry as specified in LM79: IESNA Approved Method for the Electrical and Photometric Measurements of Solid-State Lighting Products.

© 2017 Philips Lighting Holding B.V. All rights reserved.
Philips reserves the right to make changes in specifications and/or to discontinue any product at any time without notice or obligation and will not be liable for any consequences resulting from the use of this publication.
philips.com/luminaires



Philips Lighting North America Corporation
200 Franklin Square Drive, Somerset, NJ 08873
Tel. 855-486-2216

Philips Lighting Canada Ltd.
281 Hillmount Rd, Markham, ON, Canada L6C 2S3
Tel. 800-668-9008