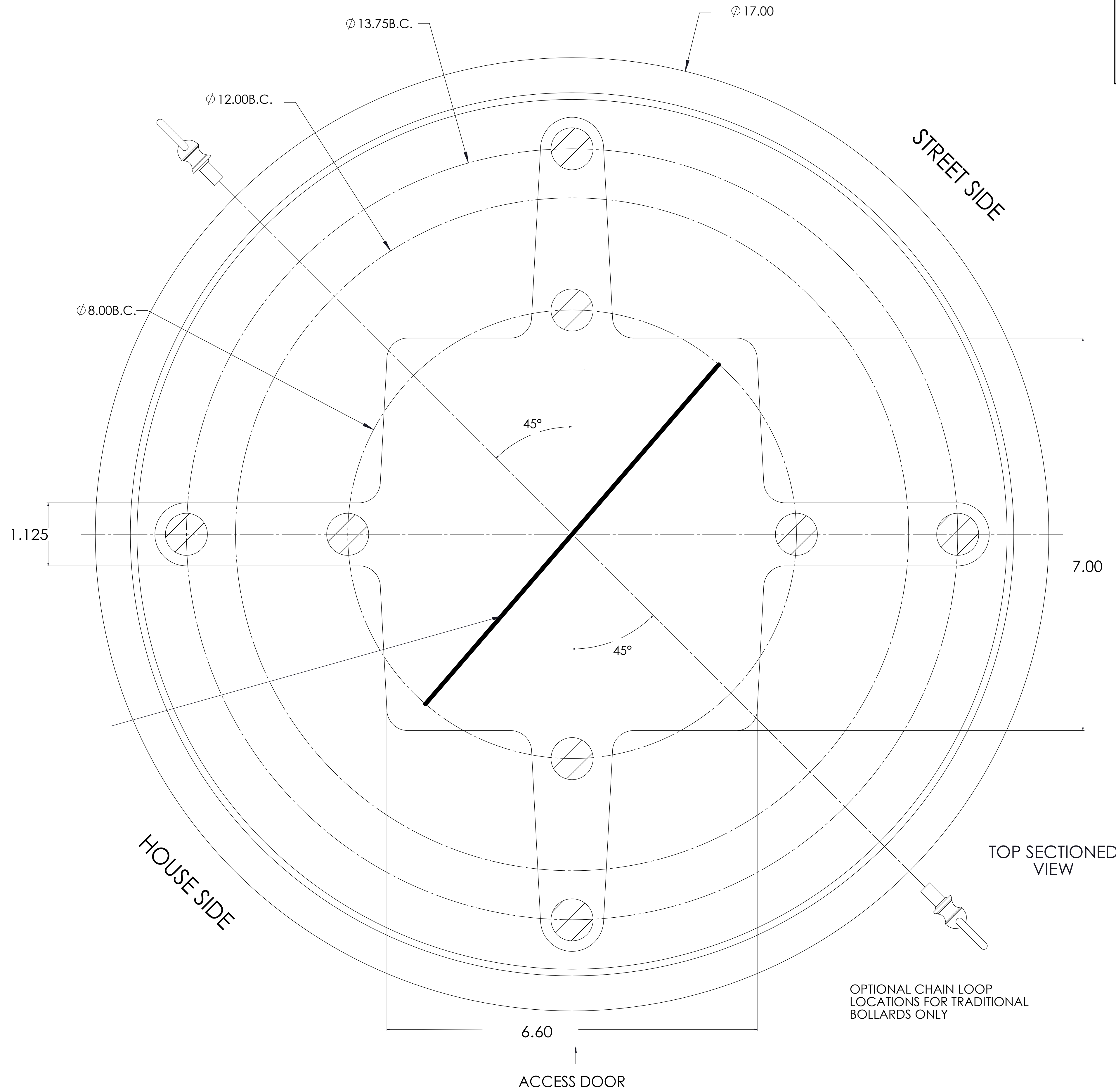
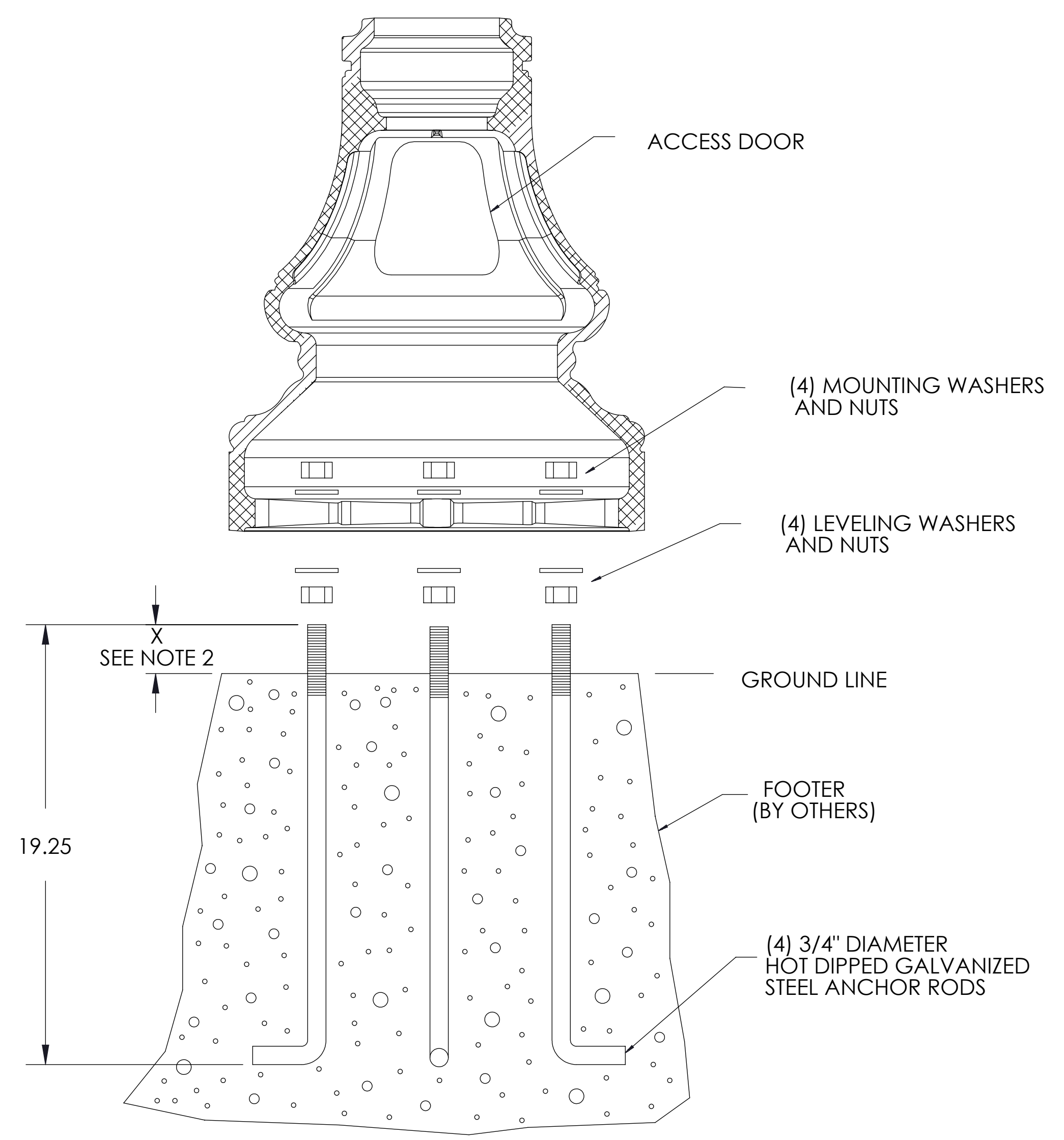


WHD	H	08-039	JGB	8/21/08
WHD	I	09-065	ALD	7/30/09
WHD	J	10-137-006	ARG	3/15/11
APPR	REV	ISO DOC	BY	DATE

PART NO. T01000385



- NOTES:
1. SUGGESTED BOLT CIRCLE: 12" DIAMETER
 MAXIMUM BOLT CIRCLE: 13 3/4" DIAMETER
 MINIMUM BOLT CIRCLE: 8" DIAMETER
 2. PHILIPS STRONGLY RECOMMENDS USING LEVELING NUTS TO MOUNT THE POST BASE. IF FOUNDATION IS NOT LEVEL, INCREASE "X" DIMENSION ACCORDINGLY WHEN USING LEVELING NUTS WITH WASHERS.
 X = 3 1/4" WITH LEVELING NUTS
 X = 2 1/4" WITHOUT LEVELING NUTS
 3. IF USING GROUTING TO CONCEAL GAP BETWEEN BASE AND FOUNDATION, ALLOW FOR WATER DRAINAGE.

OPTIONAL CHAIN LOOP LOCATIONS FOR TRADITIONAL BOLLARDS ONLY

PHILIPS 100 Craftway, P.O. Box 128 Littlestown, Pennsylvania 17340-0128 <small>UNLESS OTHERWISE SPECIFIED: *ALL DIMENSIONS ARE IN INCHES. *ALL THREADS ARE UNC-28 OR UNF-28 AFTER COATING. *ALL THREADS ARE TO BE VERIFIED WITH A THREAD GAGE.</small>	<small>CONFIDENTIAL:</small> This drawing is confidential and proprietary to Philips and may not be reproduced in whole or in part without the express written consent of Philips. All rights reserved. © 2011 by Philips Electronics.	TITLE: TEMP,AR, P3000 & P5000 SERIES POLES MATERIAL: 22 X 34 WHITE BOND PAPER.
	DRAWN BY: T. A. GOLDEN DATE: 1/7/02 CHECKED BY: B. DORON DATE: 7/30/09	DRW SIZE: D
	APPR BY: M. S. PRESSEL DATE: 9/29/03	
	* DO NOT SCALE THIS DRAWING * EF-04-01-11 Rev.09 SCALE 1:1 SHEET 1 OF 1 PART NO: T01000385	