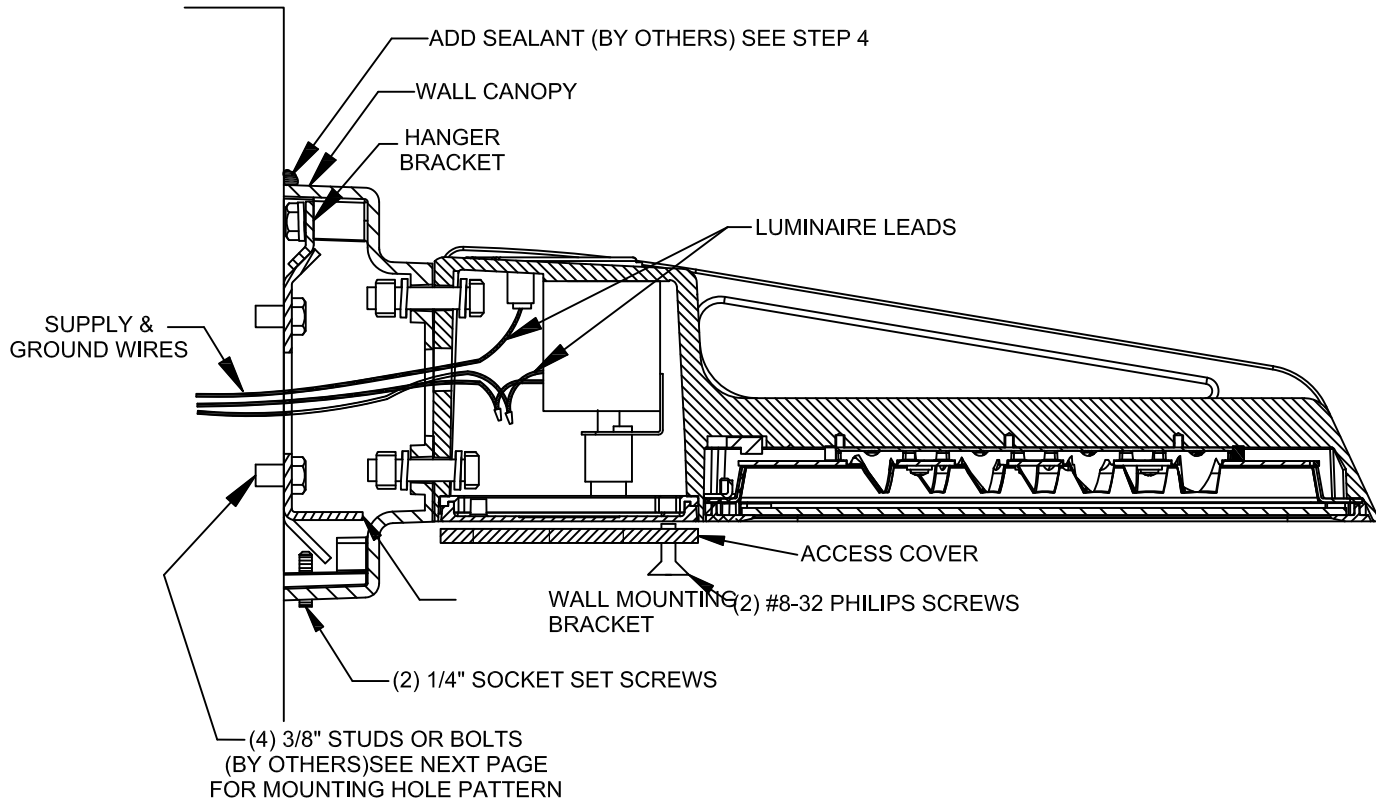


INSTALLATION INSTRUCTIONS

ELA 16/21 WALL MOUNT CANOPY (RECESSED J-BOX OR CONDUIT STUB OUT)

**IMPORTANT: READ ALL INSTRUCTIONS BEFORE PERFORMING ANY WORK.
BE SURE ALL POWER IS OFF PRIOR TO INSTALLING LUMINAIRES**



1. Place WALL MOUNTING BRACKET over splice box (or conduit stub out) and secure to wall with 3/8" studs or bolts (BY OTHERS). See mounting hole pattern for bolt location.
2. Pull SUPPLY AND GROUND WIRES so that they extend approximately 10" from WALL MOUNTING BRACKET.
3. Loosen (2) # 8-32 Philips screws and remove ACCESS COVER.
4. Apply bead of suitable weatherproof sealant along horizontal, top, vertical, left and right edges of the wall canopy plate where it contacts the wall to prevent water entry.
5. Feed SUPPLY and GROUND wires through back of WALL CANOPY into LUMINAIRE. Engage HANGER BRACKET to the top angled flap of the WALL MOUNTING BRACKET and allow WALL CANOPY to rest against the wall. Tighten (2) 1/4" SOCKET SET SCREWS using 1/8" allen wrench.

PHILIPS

www.philips.com/luminaires

© 2016 Philips Lighting Holding B.V. All rights reserved.

A819442/

443561035120-A

PAGE 1 OF 2

INSTALLATION INSTRUCTIONS

ELA 16/21 WALL MOUNT CANOPY (RECESSED J-BOX OR CONDUIT STUB OUT)

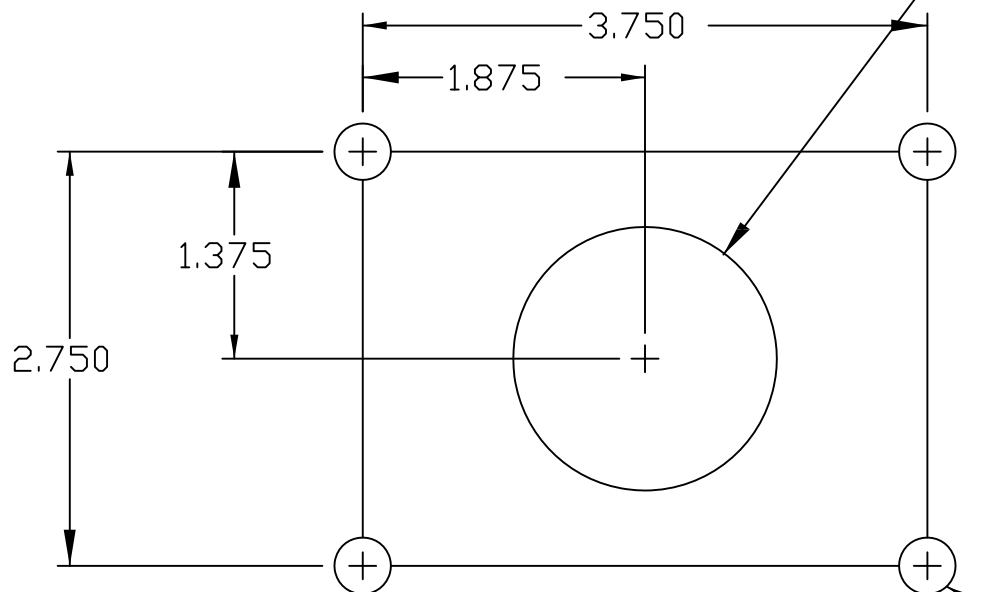
6. Connect supply and ground wires to Luminaire Leads.
Make wire connections per NEC or applicable local codes.
7. Install photocontrol if used.
8. Replace Access Cover.

NOTE: WALL MOUNTING

BRACKET IS SECURED TO WALL WITH 3/8" STUDS OR BOLTS
(BY OTHERS). STRUCTURAL MEMBERS MUST BE
PRESENT IN WALL TO ACCEPT BOLTS.



1.75" DIA.-STUB OUT TO FIT INSIDE
THIS OPENING AND TO EXTEND NO
MORE THAN 1" FROM WALL SURFACE.



3/8" STUDS OR BOLTS LOCATION. STUDS TO EXTEND
NO MORE THAN 3/4" FROM WALL SURFACE.

MOUNTING HOLE PATTERN

PHILIPS

www.philips.com/luminaires

© 2016 Philips Lighting Holding B.V. All rights reserved.

Philips Lighting North America
Corporation
200 Franklin Square Drive
Somerset, NJ 08873, USA

Philips Lighting Canada Ltd.
281 Hillmount Road,
Markham ON, Canada L6C 2S3

A819442/
443561035120-A
PAGE 2 OF 2