

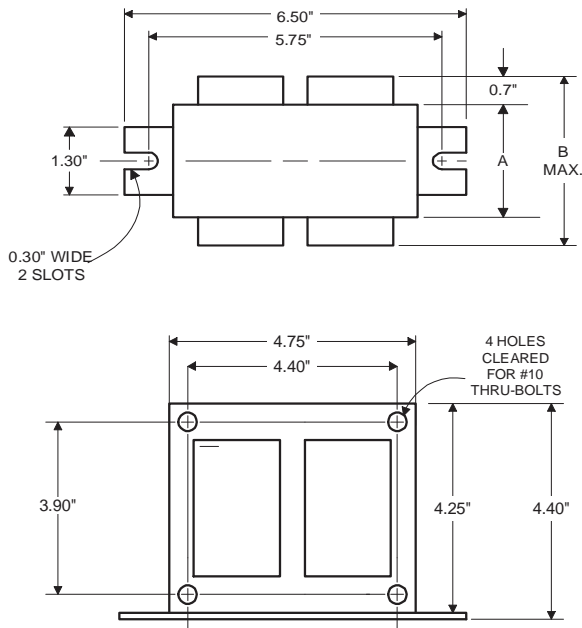
PHILIPS ADVANCE

Metal
Halide
Lamp Ballast

Catalog Number 71A57A0
For 250W M58
60 Hz CWA
Status: Active

DIMENSIONS AND DATA

4 1/4 X 4 3/4 CORE - 2 COIL UNIT



INPUT VOLTS	120	277	347		
CIRCUIT TYPE	CWA				
POWER FACTOR (min)	90%				
REGULATION					
Line Volts	±10%				
Lamp Watts	±10%				
LINE CURRENT (Amps)					
Operating.....	2.50	1.10	0.90		
Open Circuit.....	2.20	1.00	0.82		
Starting.....	1.70	0.70	0.55		
UL TEMPERATURE RATINGS					
Insulation Class	H(180°C)				
Coil Temperature Code	1029				
MIN. AMBIENT STARTING TEMP.	-20°F or -30°C				
NOM. OPEN CIRCUIT VOLTAGE	295				
INPUT VOLTAGE AT LAMP DROPOUT.....	60	138	174		
INPUT WATTS	295				
RECOMMENDED FUSE (Amps).....	8	3	3		
CORE and COIL					
Dimension (A)	1.64				
Dimension (B)	3.59				
Weight (lbs.)	9.32				
Lead Lengths	12"				
CAPACITOR REQUIREMENT					
Microfarads	15.0				
Volts (min.)	400				
Fault Current Withstand (amps)					
60 Hz TEST PROCEDURES (Refer to Advance Test Procedure for HID Ballasts - Form 1270)					
High Potential Test (Volts)					
1 minute	2000				
2 seconds	2500				
Open Circuit Voltage Test (Volts)	270-320				
Short-Circuit Current Test (Amps)					
Secondary Current	2.25-2.75				
Input Current.....	1.25-1.88	0.52-0.78	0.40-0.61	-	-

Capacitor: 7C150P40-R



Capacitance: 15
Dia/Oval Dim: 1.75
Height: 3.75
Temp Rating: 105°C

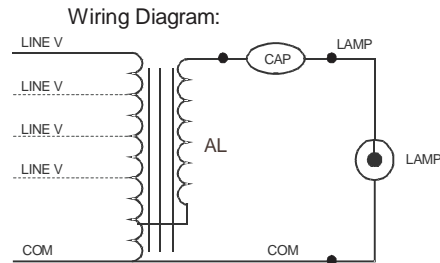


Fig. A1

Ordering Information

Order Suffix	Description
--------------	-------------

Ignitor: NA

This ballast does not require the use of an ignitor.

Data is based upon tests performed by Philips Lighting Electronic N.A. in a controlled environment and representative of relative performance. Actual performance can vary depending on operating conditions. Specifications are subject to change without notice.

Philips Lighting Electronic N.A.

10275 West Higgins Road · Rosemont, IL 60018 · Tel:800-322-2086 Fax:888-432-1882
Customer Support/ Technical Service:800-372-3331 · OEM Support: 866-915-5886

11/21/13