

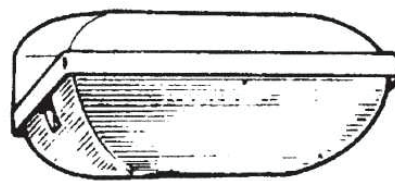
# PHILIPS

## Security

FWC 110, FWC 120-121



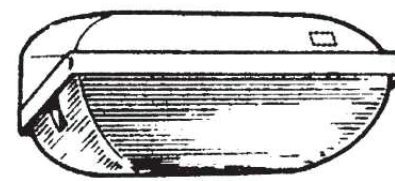
FWC 110



FWC 120, 121



FWC 110 PH



FWC 120, 121 PH



220 V  
240 V


50Hz  
60Hz



HF

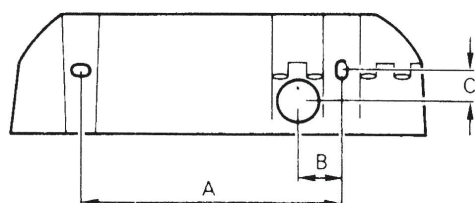
IP54



	P (W)		Light source	Photo cell
FWC110 PL-S/4P9W/827 HF II	9	0,85	MASTER PL-S 9W/827/4P	-
FWC110 PL-S/4P9W/827 HF II PH				X
FWC110 PL-S/4P9W/827 HF II BK PH				X
FWC120 PL-C/4P18W/827 HF II PH				X
FWC120 PL-C/4P18W/827 HF II	18	1,2	MASTER PL-C 18W/827/4P	-
FWC121 PL-C/4P18W/827 HF II PH				X
FWC121 PL-C/4P18W/827 HF II BK PH				X
FWC120 PL-C/4P18W/827 HF II BK PH				X
FWC121 PL-C/4P18W/827 HF II				-

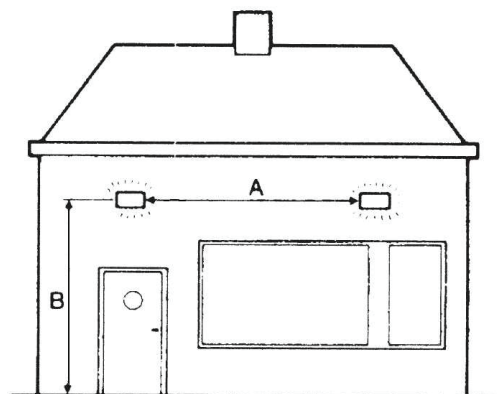
Dimensions in mm

	A	B	C
FWC110	140	23	16
FWC120, 121	170	23	10



Dimensions in mtr

	A	B
FWC110	4-7	2-3
FWC120, 121	6-10	2,5-5

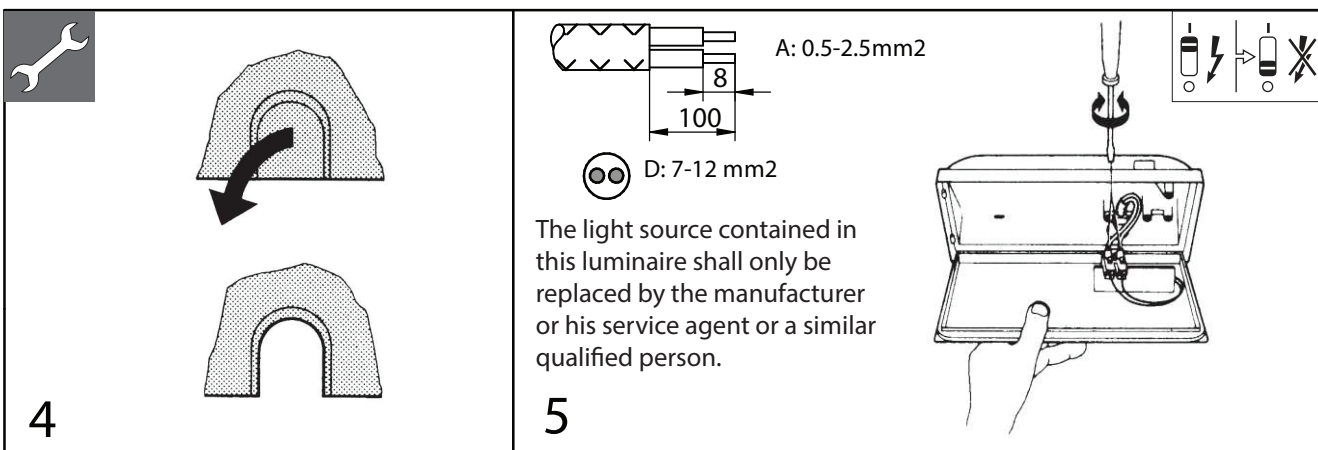
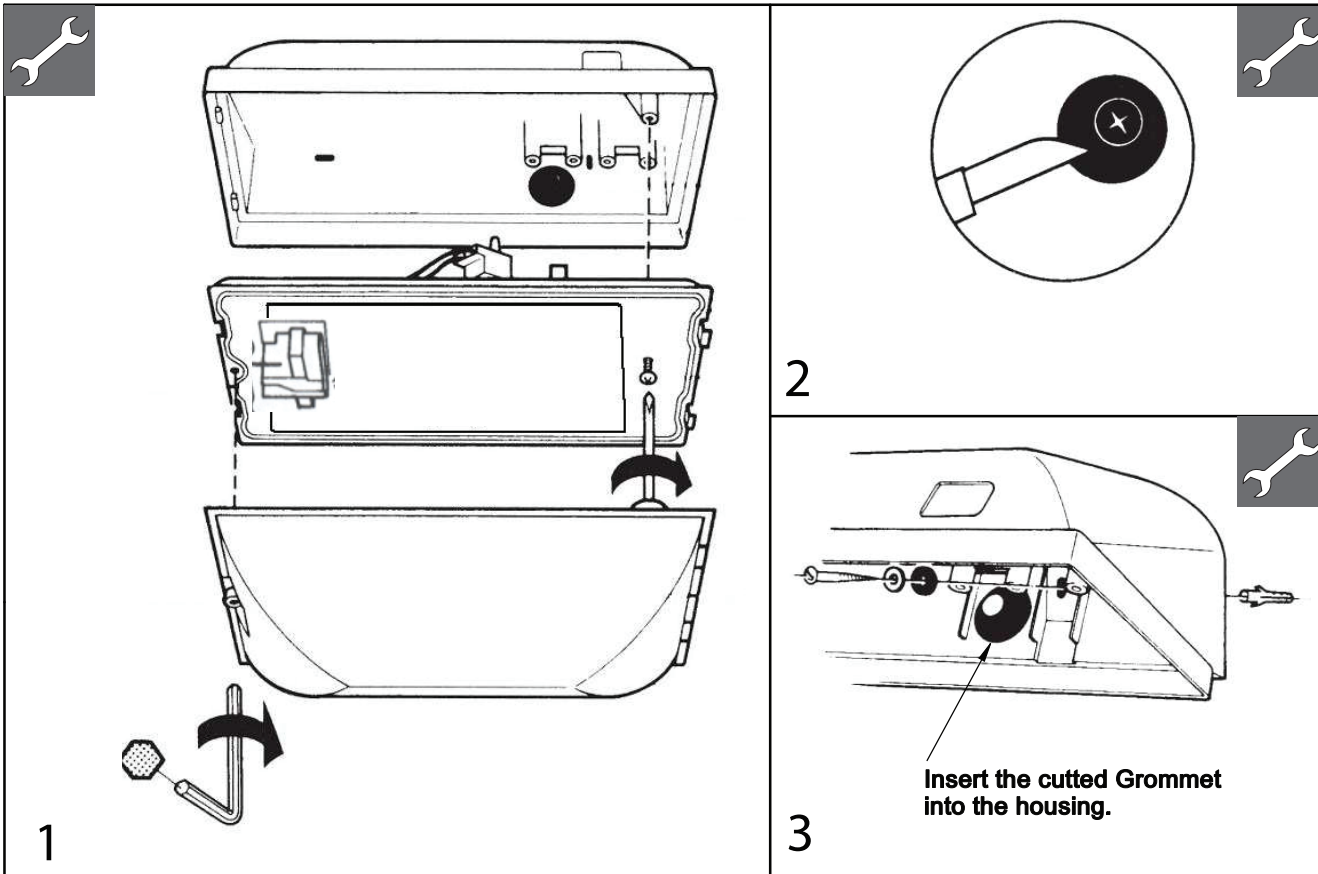


322260922678

© 11/2018, Signify Holding. All rights reserved

1/2

Printed in Hungary  
Data subject to change without notice  
Keep for future reference: [www.philips.com/lighting](http://www.philips.com/lighting)



© 2018 Signify Holding  
 All rights reserved. This document contains information relating to the product portfolio of Signify which information may be subject to change. No representation or warranty as to the accuracy or completeness of the information included herein is given and any liability for any action in reliance thereon is disclaimed. The information presented in this document is not intended as any commercial offer and does not form part of any quotation or contract. Philips and the Philips Shield Emblem are registered trademarks of Koninklijke Philips N.V.. All other trademarks are owned by Signify Holding or their respective owners.

Signify Holding.  
 The Netherlands

