



Calculite LED evolution 3" luminaires are meticulously engineered to provide consistent visual comfort, unsurpassed optical control and extraordinary mechanical precision. The portfolio also offers interchangeable optical assemblies providing flexibility in installation for commercial or residential construction.

Project: _____
 Location: _____
 Cat.No: _____
 Type: _____
 Lamps: _____ Qty: _____
 Notes: _____

Complete product = Frame + Engine + Trim

Frame

example: C3L085NUZ10VVB

Series	Installation	Voltage / Options	Version
C3L085	N		VB
C3L085 Calculite LED 3" evolution	N New construction	UEL AirSeal IC, 120/277V with ELV dimming (120V dimming only) ¹ UZ10V AirSeal IC, 120/277V with Lightolier 0-10V 1% dimming ¹ ULD AirSeal IC, 120/277V with Lutron L3DA Hi-Lume 1% EcoSystem LED driver (3-wire) ¹ ULH AirSeal IC, 120/277V with Lutron LDE1 Hi-Lume 1% EcoSystem LED driver (soft-on) ¹ (Fade-to-Black dimming)	VB Version B

Engine

example: C3L085LW0127K9VB

Series	Style	Technology	CCT	CRI	Version
C3L085					VB
C3L085 Calculite LED 3" evolution	LW Lensed Wall Wash	01 1000lm	27K 2700K 30K 3000K 35K 3500K 40K 4000K ²	8 80 CRI 9 90 CRI ²	VB Version B

Trim

example: C3LLWCPL

Series	Style	Finish	Flange
C3L	LW		
C3L Calculite LED 3" evolution	LW Lensed Wall Wash	CL Specular clear CCL Comfort clear CCD Comfort clear diffuse CCZ Champagne bronze BK Black (matte) WH White (matte)	W White (matte) P Polished (anodized only) FT Flangeless (requires CA3FMR)

Accessories (ordered with a flangeless trim)

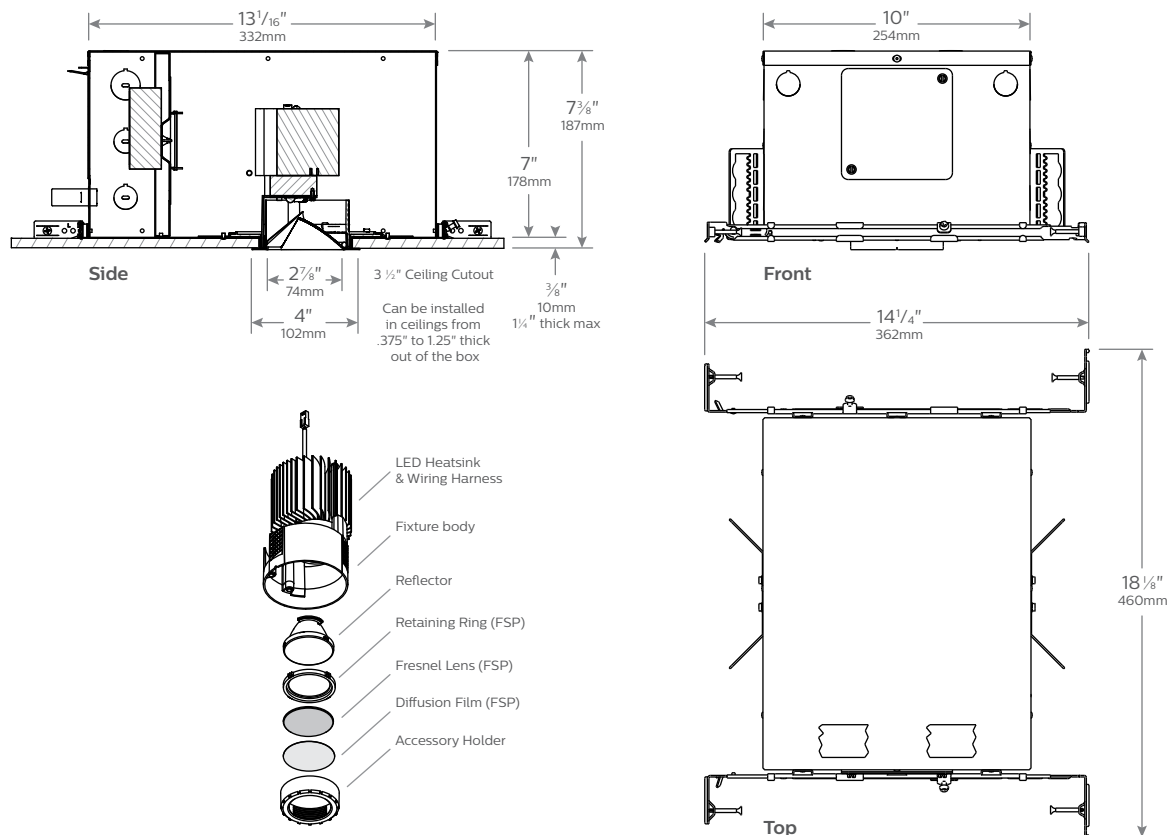
CA3FMR Mud-in ring for use with flangeless installations.

1. All frame-in-kits listed above are suitable for insulated ceilings, AirSeal and CCEA required installations.
2. The 90CRI is not available for 4000K.

C3LLW Calculite LED 3" Evolution

Lensed Wall Wash

New Construction (N)



Features

Magnetic Trim attachment: Trim kit attaches to appropriate Light Engine, which is keyed to ensure correct installation. Magnetic attachment ensures trim mounts flush with the ceiling (prevents gaps that can commonly occur with traditional friction spring installs). Allows for secure fit, but is much easier to remove/install when making adjustments.

Tether: Discrete steel cable tether fixed to the fixture body with snap in connector to reflector body which holds reflector secure while aiming unit or applying filters (prevents loss of trim).

Aperture Cone: 0.040" aluminum, white or anodized – clear, comfort clear, comfort clear diffused, wheat (bronze) or black; Trim flange painted white or polished. Flangeless trim used with plaster mud-in-ring accessory – see options and accessories.

Horizontal Rotation Adjustment Mechanism: Die-cast aluminum ring w/matte black finish. Unique design which allows for 366° horizontal rotation with positive stop for aiming accent finishing sections (tool less adjustment).

Finishing Section Assembly: Uniquely formed aluminum RFL geometry coupled with custom diffusion film, and kick reflector allows for optimal wall-washing capabilities (uniform, even distribution from ceiling line-on-down).

Light Engine Retention: Finishing section is attached to Frame in Kit by 3 symmetrically offset spring loaded ball and groove mating parts. This mounting system offers a smoother, near effortless initial installation of the Finishing Section and the ability to fine tune the height to match any ceiling thickness in the range mentioned above.

Light Engine Assembly: LED light engine is positioned to have 50° cut-off at nadir position for adjustable accent and traverses thru adjustment for ideal light source positioning and maximizing accent capability.

Unitized optics: to ensure proper lamp orientation regardless of ceiling thickness.

LED Driver: Serviceable and Replaceable from below ceiling. Four compatible dimming technologies are available depending on driver option: 0-10 Volt, Electric Low Voltage (ELV) and Lutron Dimming 3-wire and EcoSystem.

Frame Mounting: Accommodates virtually any commercial installation with adjustable, pre-installed mounting brackets and user supplied 0.5" EMT Tubing or Lightolier purchased mounting bars. Additionally accommodates mounting to residential joist (steel or wood) construction spacing 12" to 24" On Center (O.C.) joists with supplied mounting bars (Lightening Bars). Minimum joist height of 8" required.

Frame-In Kit: IC AirSeal – Luminaire may be in direct contact with thermal insulation. Chicago Plenum Rated. See Frame-In Kit specification sheets for more information.

Options and Accessories

Lensed Wall Washer Trim Series Options: C3LLW series (has inherent finish options)

Plaster Trim Ring: CA3FMR (use with flangeless trim)

Labels and Certifications

cU.L.us (suitable for damp locations)
I.B.E.W., Title 24, ENERGY STAR®

C3LLW Calculite LED 3" Evolution

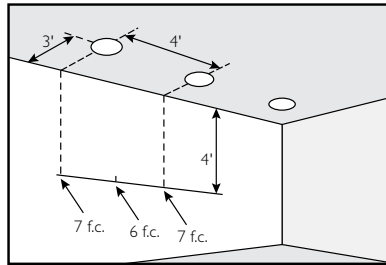
Lensed Wall Wash

Lighting Data

Frame: **C3L085NUZ10VVB**
 Engine: **C3L085LW0135K8VB**
 Trim: **C3LLWCLW & C3LLWCCDW**

Example of illumination on the wall.

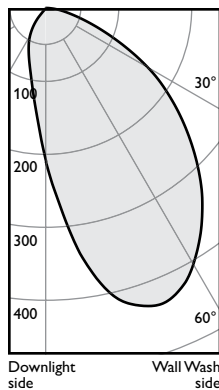
4' down from the ceiling is 7 f.c. beneath and 6 f.c. between fixtures.



Adjustment factors

CCT	CRI
4000K = 101%	80CRI = 100%
3500K = 100%	90CRI = 82%
3000K = 98%	
2700K = 93%	

Wall Wash, 1000lm Engine, 33.1 lm/W, Specular Clear



Frame: **C3L085NUZ10VVB**
 Engine: **C3L085LW0135K8VB**
 Trim: **C3LLWCLW**
 Output lumens: 430 lms
 Input watts: 13.0 W (±5%)
 CRI: 80 min (±2%)
 CCT¹: 3500K

Efficacy: 33.1 lm/w
 Report²: 1153GFR

Multiple unit data

Footcandles on wall

	2' from wall			
	3' on ctr.			
Distance from ceiling in feet	1	2	3	4
1	25	13	25	
2	30	20	30	
3	21	18	21	
4	14	13	14	
5	10	10	10	
6	7	7	7	
7	5	5	5	
8	4	4	4	
9	3	3	3	
10	3	3	3	
12	2	2	2	
14	2	2	2	

Multiple unit data

Footcandles on wall

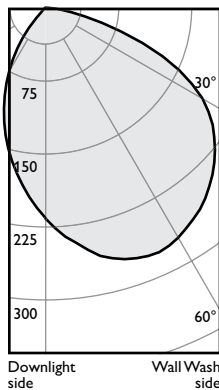
	3' from wall			
	3' on ctr.			
Distance from ceiling in feet	1	5	5	5
1	5	15	13	15
2	15	18	16	18
3	18	16	16	18
4	16	15	16	16
5	12	12	12	12
6	10	10	10	10
7	8	8	8	8
8	6	6	6	6
9	5	5	5	5
10	4	4	4	4
12	3	3	3	3
14	3	2	3	3

Multiple unit data

Footcandles on wall

	3' from wall			
	4' on ctr.			
Distance from ceiling in feet	1	7	5	7
1	7	15	10	15
2	15	14	11	14
3	14	12	10	12
4	12	9	8	9
5	9	7	7	7
6	7	6	6	6
7	6	5	4	5
8	5	4	4	4
9	4	3	3	3
10	3	2	2	2
12	2	2	2	2
14	2	2	2	2

Wall Wash, 1000lm Engine, 34.4 lm/W, Comfort Clear Diffuse



Frame: **C3L085NUZ10VVB**
 Engine: **C3L085LW0135K8VB**
 Trim: **C3LLWCCDW**
 Output lumens: 450 lms
 Input watts: 13.1 W (±5%)
 CRI: 80 min (±2%)
 CCT¹: 3500K

Efficacy: 34.4 lm/w
 Report²: 1152GFR

Multiple unit data

Footcandles on wall

	2' from wall			
	3' on ctr.			
Distance from ceiling in feet	1	2	3	4
1	32	17	32	
2	27	22	27	
3	17	16	17	
4	12	11	12	
5	8	8	8	
6	6	6	6	
7	5	5	5	
8	4	4	4	
9	3	3	3	
10	3	3	3	
12	2	2	2	
14	2	2	2	

Multiple unit data

Footcandles on wall

	3' from wall			
	3' on ctr.			
Distance from ceiling in feet	1	11	9	11
1	11	19	18	19
2	19	17	16	17
3	17	16	16	17
4	13	13	13	13
5	10	10	10	10
6	8	8	8	8
7	6	6	6	6
8	5	5	5	5
9	4	4	4	4
10	3	3	3	3
12	3	3	3	3
14	2	2	2	2

Multiple unit data

Footcandles on wall

	3' from wall			
	4' on ctr.			
Distance from ceiling in feet	1	10	6	10
1	10	16	12	16
2	16	13	12	13
3	13	10	10	10
4	10	8	8	8
5	8	6	6	6
6	6	5	5	5
7	5	4	4	4
8	4	3	3	3
9	3	3	3	3
10	3	2	2	2
12	2	2	2	2
14	2	2	2	2

1. Correlated Color Temperature within specs as defined in ANSI_NEMA_ANSI C78.377-2008: Specifications for the Chromaticity of Solid State Lighting Products.
2. Tested using absolute photometry as specified in LM79: IESNA Approved Method for the Electrical and Photometric Measurements of Solid-State Lighting Products.

