

CANLYTE

CFI FLUORESCENT LouverBay

Fluorescent Low Bay
for Commercial Applications



GIFTS

MAGAZINES

Good commercial lighting sells.

"Light attracts. The quantity and quality of illumination, the impression it creates about merchandise and the effect it has on the retail area's appearance [...] are all factors in a successful sale."

– Illuminating Engineering Society of North America



LouverBay comes in 2-, 3- and 4-lamp models, in 4' and 8' lengths. Choice of T5 (28W), T5HO (54W) or T8 (32W) lamps.

CFI Fluorescent... Reliable Fluorescent Solutions

Dependability is our promise. Specifiers tell us we deliver on it with every order. How? Our well-designed luminaires are built with the most modern technology, practically applied, so you don't have to worry. Our proven quality comes from a manufacturing and testing facility second to none, recently expanded and the only one in Canada dedicated to fluorescent lighting. We make sure our luminaires provide the latest in energy efficiency, visual comfort, controlled light distribution and all the features you need to meet your most challenging specifications. We are committed to producing the best fluorescent lighting luminaires you can find. *Reliable Fluorescent Solutions* from CFI Fluorescent. It's in our name. You can depend on it.

LouverBay proves it.

New high-performance LouverBay luminaires feature outstanding cost-effectiveness for low bay fluorescent lighting. Discover how LouverBay delivers more lighting value to your store. And more customer interest in your merchandise.

Good Looks

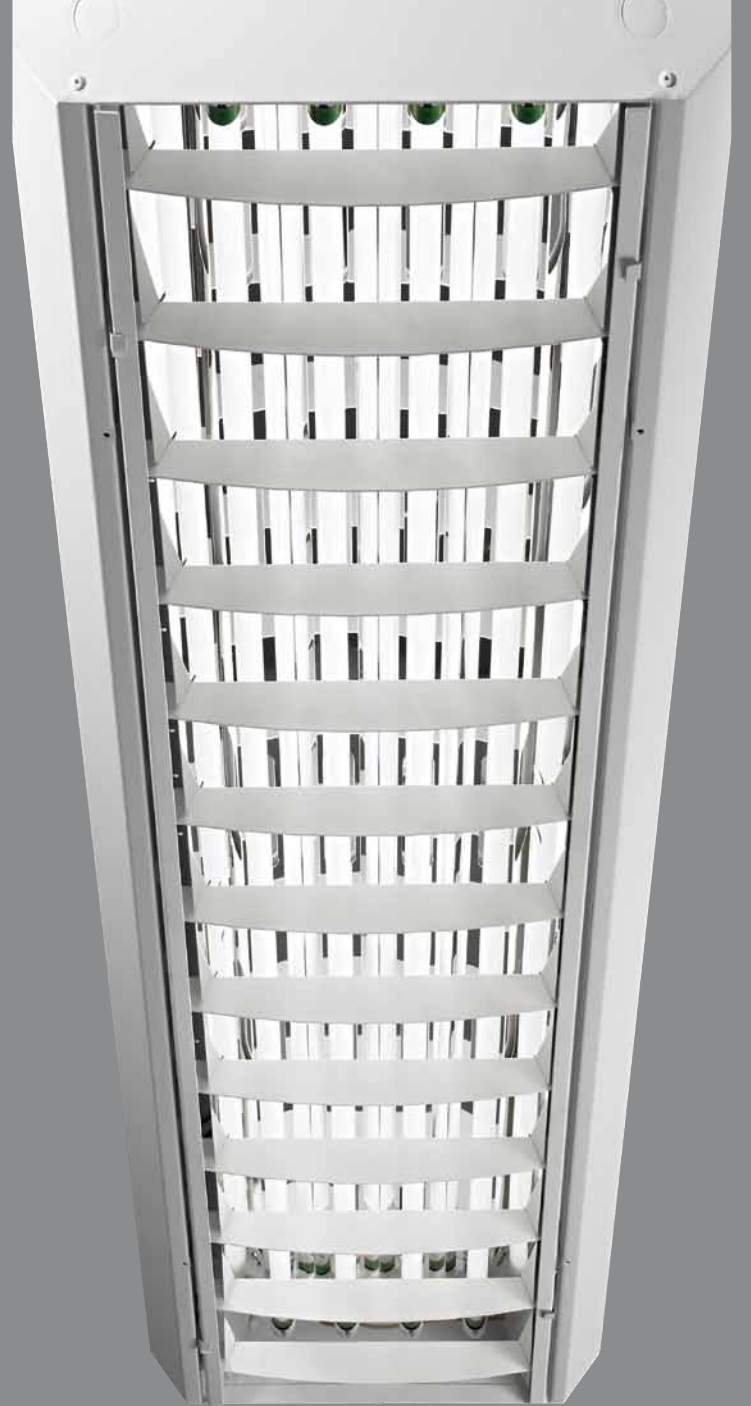
- More attractive aesthetics
- Uplight feature enhances store environment

Quality Construction

- Best built low bay luminaire for the retail sector

Advanced Lighting Performance

- Superior lighting output for greater merchandise appeal
 - Low operating cost
-



Fluorescent Lighting...

The perfect solution for showcasing retail merchandise

With their many benefits including long life (typically 8 years in stores), fluorescent sources provide quality lighting that helps improve the bottom line of retail chains. These lamps feature high colour rendering (CRI of 85) that makes merchandise stand out as if it were displayed under daylight conditions. Plus, their superior colour consistency means that products keep looking their best, regardless of lamp life. Fluorescent sources are exceptionally cost-effective owing to their low energy consumption (high lumen per watt ratio) and relatively low purchase price. They are easy to install and replace, resulting in maintenance savings as well. What's more, their motion sensor compatibility offers the potential for added energy savings in low-traffic areas.


How LouverBay lighting sells...

Good commercial lighting sells by visually attracting the customer and facilitating buying decisions. It allows shoppers to evaluate merchandise in the aisles and vertical displays. LouverBay lighting sells by creating visual comfort and a pleasant buying experience. Its glare-free shopping is suited to retail outlets, superstores and other commercial spaces with ceilings up to 18'. Chain and stem mounting are available.

Best built low bay luminaire for the retail sector

Engineered in Canada, LouverBay is manufactured in CFI Fluorescent's state-of-the-art manufacturing facility in Cornwall, Ontario. We stand by the quality of our products.

- Built tough for long-lasting, warp-free use
- Made of 20 gauge die-formed, cold-rolled steel for superior strength
- One-piece body for both 4' and 8' luminaire lengths



LouverBay is built from a sturdy one-piece housing, offering a cleaner, streamlined appearance.



More attractive aesthetics

LouverBay's design is more appealing compared to similar commercial luminaires.

- Slim profile: 2-1/8" housing depth
- Modern, sleek form provides clean luminaire appearance
- Post painted using a white powder-coat finish

Superior lighting output for greater merchandise appeal

Merchandise is often displayed on shelving racks or walls. So lighting the vertical plane is more important than the horizontal plane. How does LouverBay meet that challenge?

- Because its candlepower distribution is designed for lighting vertical planes, store owners only pay for the lumens they need to light their merchandise.
 - Lighting efficiencies of up to 86.8% with four T8 lamps
 - Controlled light distribution bringing out textures, a key product feature for many retailers (apparel, food, plants, furniture, etc.).
-



Slotted top provides uplight and ventilation.

Uplight feature enhances store environment

A well-lit, inviting ceiling appearance contributes to a store's positive ambience. Darker ceilings produce a more closed-in feeling, uncomfortable to most shoppers.

- LouverBay supplies 12% uplight, which reduces the cave effect, expands the store and makes the space look cleaner.
- Vented top of housing also keeps the ballast cool, ensuring longer service life.



In addition to controlling glare, the one-piece white radial louver with integral hinged and cam-latch design provides quick, tool-free access to lamp compartment, reducing maintenance costs.

Low operating cost

LouverBay delivers more value for your commercial lighting dollar, providing improved affordability throughout the life cycle.

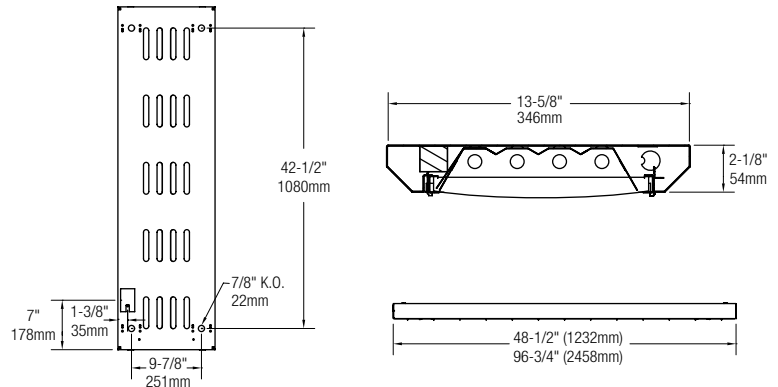
- Requires fewer luminaires to produce the same amount of light, resulting in a lower overall purchase price.
- More lumens per watt thanks to the fluorescent source and superior lighting efficiencies thanks to the luminaire design ensure lower lighting energy costs.
- Fast installation and maintenance-friendly features (see photo) help cut down maintenance time.



Commercial Lighting Fixture

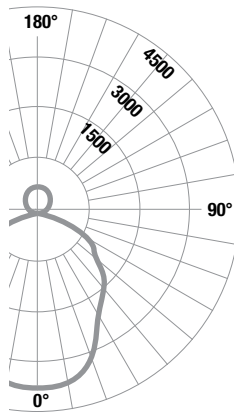
LouverBay

Pendant Mounted Fluorescent with Uplight for 4-Lamp T8/T5



Features

- Ideal for stores and other applications requiring efficiency and lighting control
- For ceilings up to 18 feet high
- **Efficiency:** 86.7% (based on 4-T8 lamps)
- **Body:** One piece chassis made of 20 gauge cold rolled steel die-formed for superior strength. Both 4' or 8' length available in a single piece housing
- Slots on top of the fixture providing adequate ventilation and 12% uplight reducing cave effects
- Chassis exterior and cavity post painted in a white baked polyester powder coat finish
- Slim profile of 2-1/8" depth, ideal where ceiling height is an issue
- **Reflector:** Contoured or flat Miro IV reflector with 95% reflectivity
- **Thermally protected** class "P" ballast. C.B.M. approved, non PCB. If knock out is within 3" of ballast, use wire suitable for at least 90°C
- **Certification:** cCSAus



RCR	CU†
1	0.90
2	0.80
3	0.71
4	0.64
5	0.57
6	0.51
7	0.46
8	0.42
9	0.38
10	0.34

Options/Accessories

- **Emergency Power Pack:** Factory installed emergency power pack includes charger and inverter concealed in fixture channel. Upon loss of AC power, operates one lamp at high lumen output for 90 minutes. Consult factory for 347V. Add suffix **E** (standard Bodine LP600) or **O** (BI00-CAN for T8 lamps)
- **Electrical Wiring Options:** Consult factory
- **Stem and Canopy Kits:** Suspend luminaire 12", 18", 24", 36" and 48" from surface. Four recommended per fixture. Order **STKF12, STKF18, STKF24, STKF36, STKF48**
- **Chain Suspension Option:** 24" Chain Suspension Kit. Two required per fixture. Order **EE9HC**
- **Luminaire-Mounted Motion Sensor** 360° coverage. Field installed. Compatible only with contoured reflectors. Order **FH360**

Reference Data*

Efficiency	86.7%
Spacing Ratio (along)	1.2
Spacing Ratio (accross)	1.1

Electronic Ballast*

Input Watts (UNV)	230W
Ballast Factor	1

Application Data**

Luminaire Spacing	FC	Max./min. ratio	W/Sq. Ft.
<hr/>			
105' x 61' x 22' space			
15' center to center	72/54	2.2	2.68

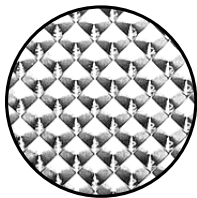
Ordering Guide

Type	Lamp Qty/ Type	Luminaire Length	Catalogue Number
Contoured reflector	4-T5	4'	FL4C4ULW428
	4-T5	8'	FL8C4ULW428
	4-T5HO	4'	FL4C4ULW454
	4-T5HO	8'	FL8C4ULW454
	4-T8	4'	FL4C4ULW432
	4-T8	8'	FL8C4ULW432

Ordering information

Explanation of Catalog Number: Example: **FL4C4ULW454UNVPG**

FL	4	C	4	U	LW	4	54	UNV	PG	
FL Series LouverBay	Fixture Length	Reflector	Fixture Width	Light Direction	Lens/ Shielding	Lamps in X-Section	Lamp	Voltage	Ballast Type	Options
	4 = 4' 8 = 8'	C = Contoured Specular Inside Reflector S = Flat Specular Inside Reflector	4 = 17"	U = Uplight	XX = No Shielding LW = Solid White Louver WW = White Wireguard VA = Prismatic Lens VA with Wiregard VB = Prismatic Lens VB with Wiregard W3 = White Wiregard/ 3 ft. Cord and Twist Lock Plug L3 = Solid White Louver/3ft. Cord and Twist Lock Plug A3 = Lens VA with Wiregard/3ft. Cord and Twist Lock Plug	2 = 2 Lamps*** 3 = 3 Lamps*** 4 = 4 Lamps	28 = 28W T5 32 = 32W T8 54 = 54W T5HO (nominal 48")	UNV = 120-277V 120 277 347	PG = T5/T5HO Elect. PS One 2-lamp THD<10% HI = T8 Elect. I.S. One 2-lamp THD<10% H3 = T8 Elect. I.S. One 3-lamp THD<10% PU = T5 Elect. PS. One 3-lamp THD<10% PV = T5/T5HO Elect. PS. One 4-lamp THD<10% H4 = T8 Elect. I.S. One 4-lamp THD<10% HA = T8 Elect. I.S. One 2-lamp HBF THD<10% HC = T8 Elect. I.S. One 4-lamp HBF THD<10%	E = Emergency Pack Bodine LP600 O = B100-CAN for T8 lamps



VA: Pattern 12 prismatic lens made of virgin acrylic (.095" nominal). Complete with hinged white wireguard.

VB: Pattern 12 prismatic lens made of virgin acrylic (.125" nominal). Complete with hinged white wireguard.

* FL4C4ULW454UNVPG.

** FL4C4ULW454120C2 tandem. Initial footcandles on horizontal/vertical plane.

Total LLF=1.0. Reflectances: 70% ceiling, 40% walls, 20% floor: 22' ceiling height, 3' mounting height, 1'x1' calculation grid, Workplane at 0', 4,400 lumens lamps at 25°C.

*** 2 and 3 Lamps Only Available with Flat Specular Reflector

CFI Fluorescent... Reliable Fluorescent Solutions

CFI Fluorescent is a dependable lighting partner serving the commercial, industrial and institutional markets with a complete line of innovative and energy-efficient fluorescent luminaires engineered and manufactured in North America.

CFI Fluorescent solutions are backed by a nationwide sales force of trained Canlyte representatives offering a wide range of support services. These include computer-assisted Genesys III lighting design workstations, which simulate the lighting options and calculations for a given space, and the Lighting Concept Centre, a 7,500 square foot demonstration facility giving lighting professionals the opportunity to see lighting solutions in action.

For more information, contact:

CFI Fluorescent

A Philips group brand

3015 Louis-Amos
Lachine, QC H8T 1C4
Phone: (514) 636-0670
Fax: (514) 636-0460
Website: www.canlyte.com
Email: info@canlyte.com

Catalogue #CG300E

Version française disponible.

Printed in Canada. Copyright 2009 Philips Group.

We reserve the right to change details of design, materials and finish that will not alter installed appearance or reduce function and performance.



Some luminaires use fluorescent or high intensity discharge (HID) lamps that contain small amounts of mercury. Such lamps are labeled "Contains Mercury" and/or with the symbol "Hg." Lamps that contain mercury must be disposed of in accordance with local requirements. Information regarding lamp recycling and disposal can be found at www.lamprecycle.org.