

READ AND UNDERSTAND THESE INSTRUCTIONS BEFORE INSTALLING FIXTURE

This fixture is intended for installation in accordance with the National Electrical Code and local regulations. To assure full compliance with local codes and regulations, check with your local electrical inspector before installation. To prevent electrical shock, turn off electricity at fuse box before proceeding.

Retain these instructions for maintenance reference.

INSTRUCTION SHEET NO.

IS:8276

0892

Page 1 of 2

INSTRUCTIONS FOR ATTACHING LINEAR® ADAPTER TO LYTESPAN® TRACK FOR USE WITH LYTESPAN BASIC OR ADVENT TRACK SYSTEM ONLY

INSTRUCTIONS FOR ATTACHING LINEAR® TO SINGLE CIRCUIT TRACK SYSTEMS

1. Insert into LYTESPAN TRACK (see Fig. 1). LOCKING LEVER must be on the same side of track as BEAD.
2. Rotate FITTING 90° clockwise until LOCKING LEVER snaps and locks in place (see Fig. 2 and 3).
3. To remove: depress LOCKING LEVER, then rotate FITTING 90° counterclockwise.

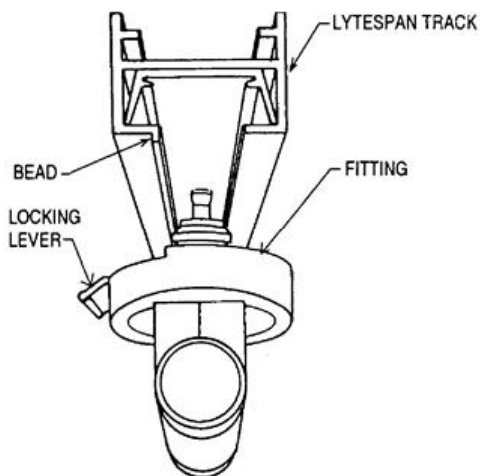


FIG. 1

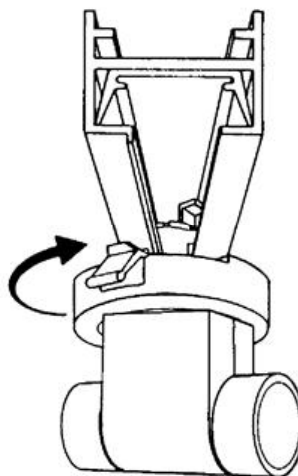


FIG. 2

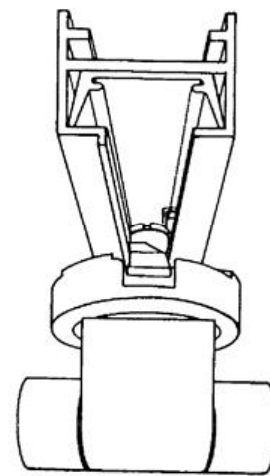


FIG. 3

INSTRUCTIONS FOR CONVERTING FITTING TO OPERATE ON 2 CIRCUIT TRACK SYSTEMS

See Fig. 4. BRASS CONTACT can be raised or lowered. Broken line indicates position for 1 circuit or lower circuit of 2 circuit track system.

To convert attachment FITTING for upper circuit of 2 circuit track, raise BRASS CONTACT to high position by lifting CONTACT as high as stop permits and CONTACT clicks into place.

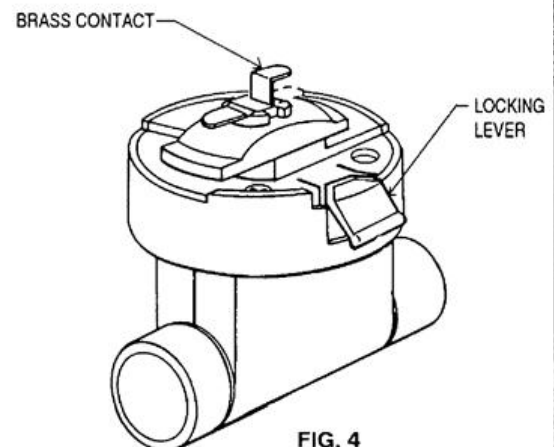


FIG. 4

SEE BACK FOR LAMPING