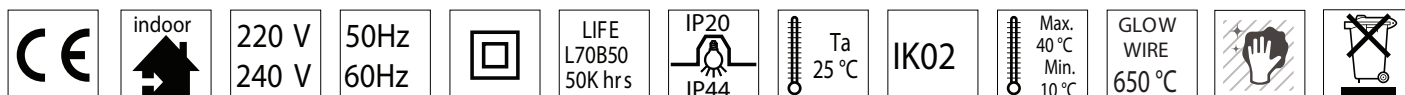
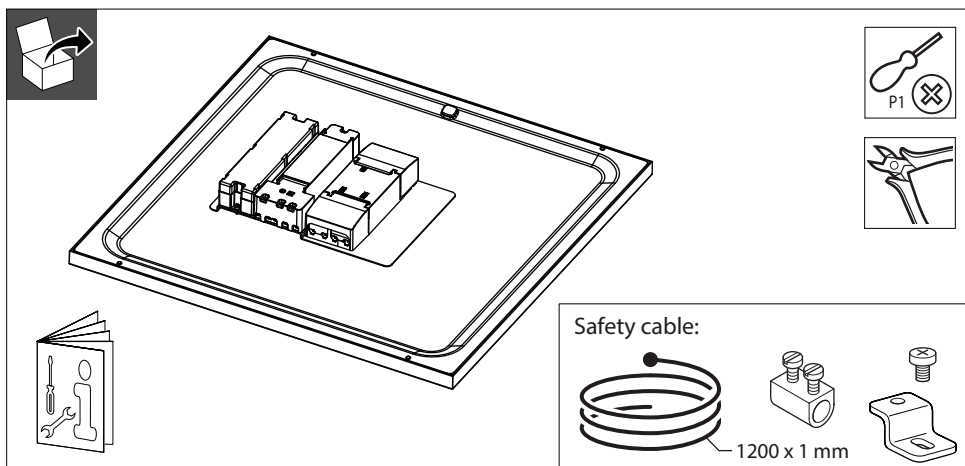


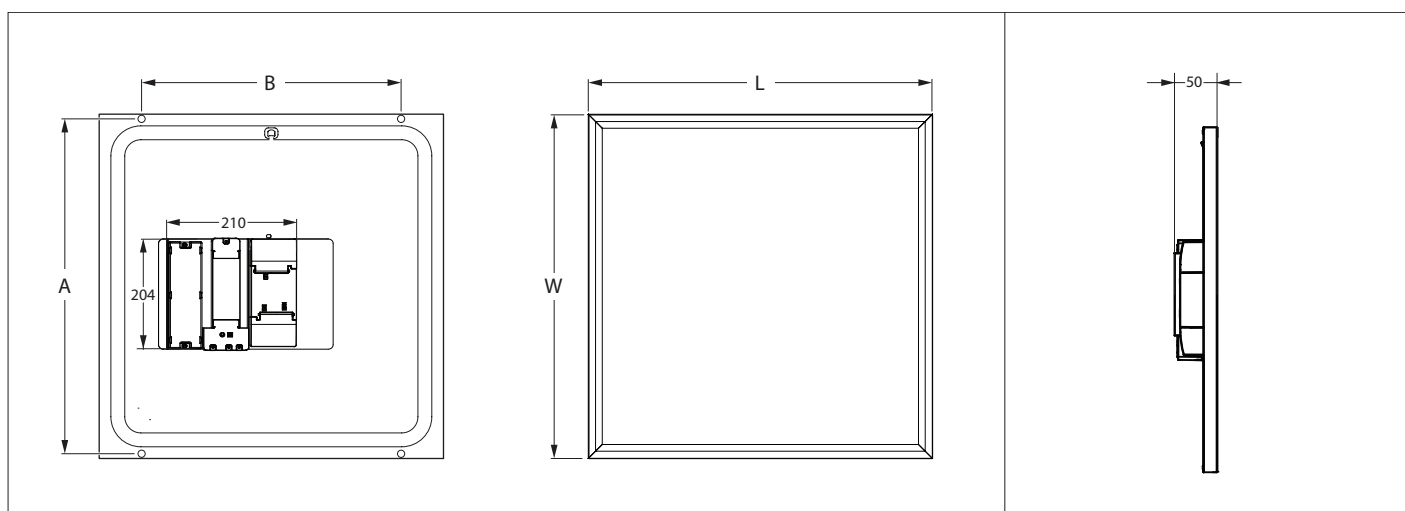
PHILIPS

Coreline Panel Emergency

RC132V

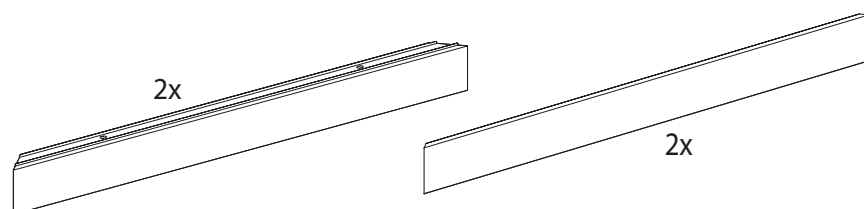


	Lumen (lm)		Power (W) PSU/PSD/IA1	W x L (mm)	A x B (mm)	Weight (kg)
	4000K	3000K				
RC132V W60L60	3600	3400	40W	597 x 597	581 x 450	4.65
RC132V W30L120				297 x 1197	281 x 1050	5.05

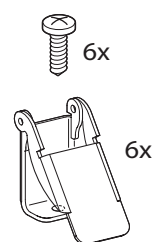


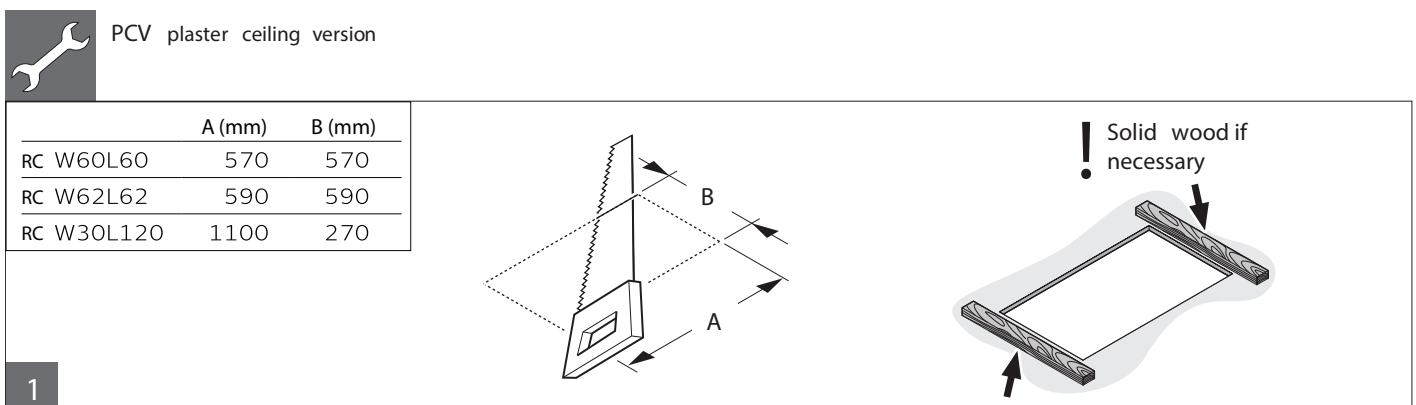
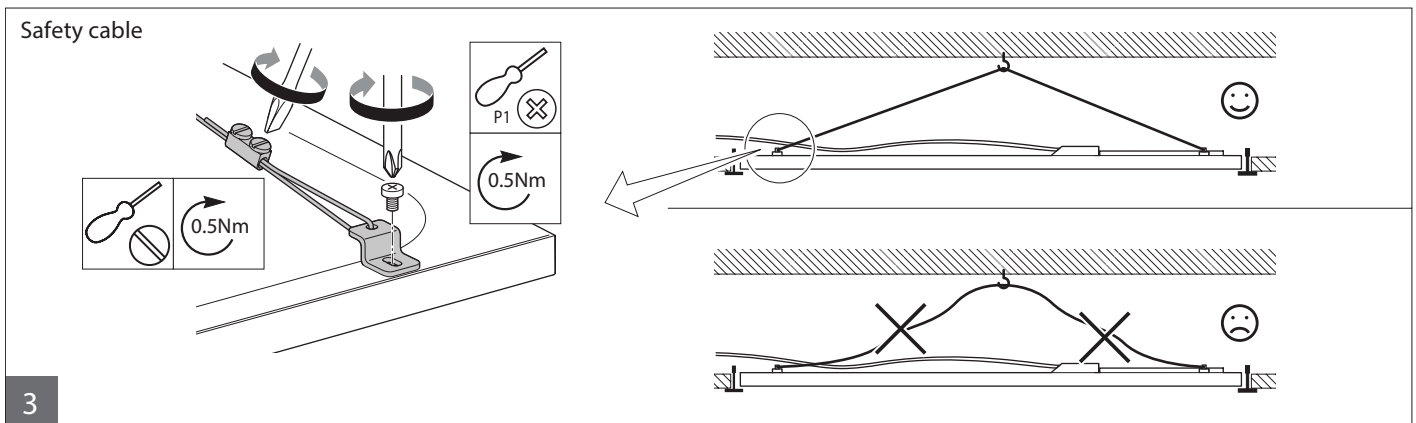
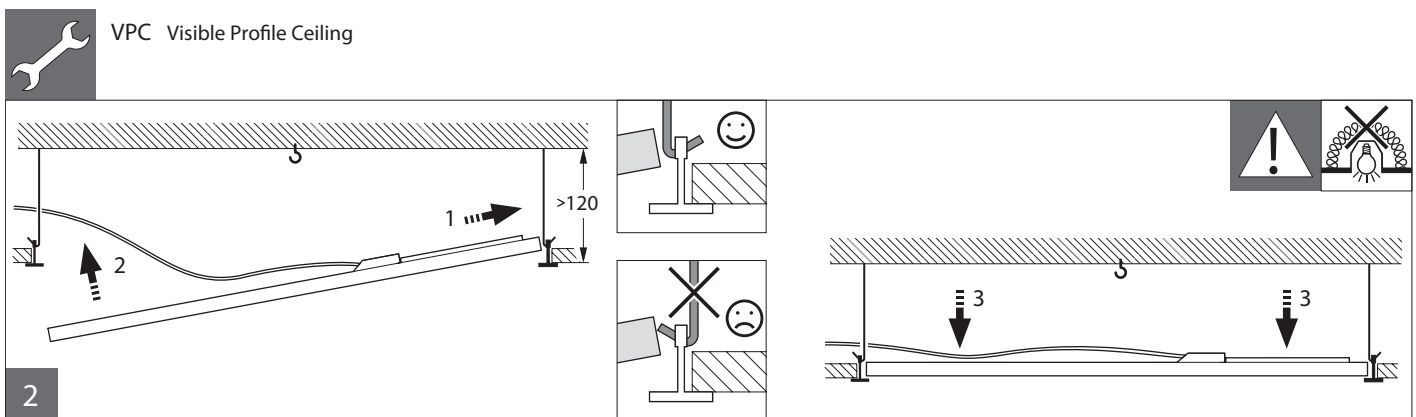
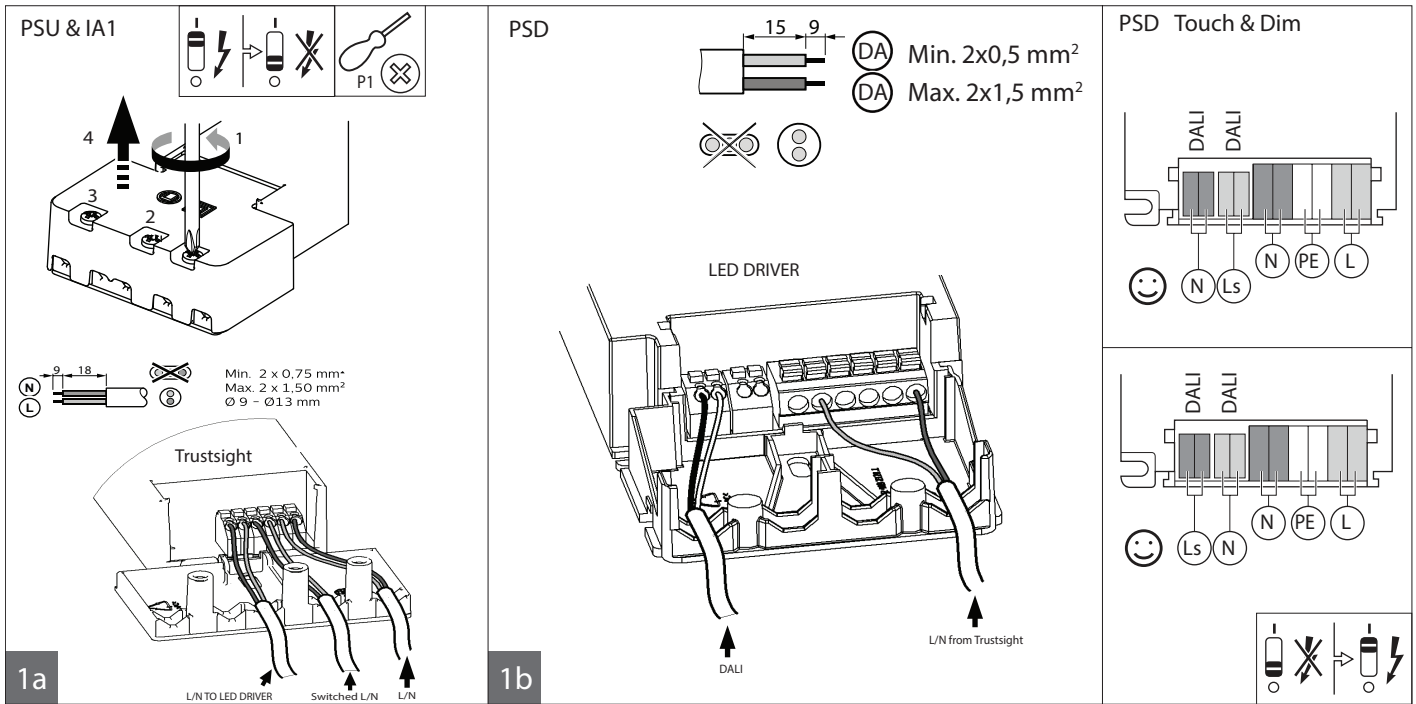
Optional:

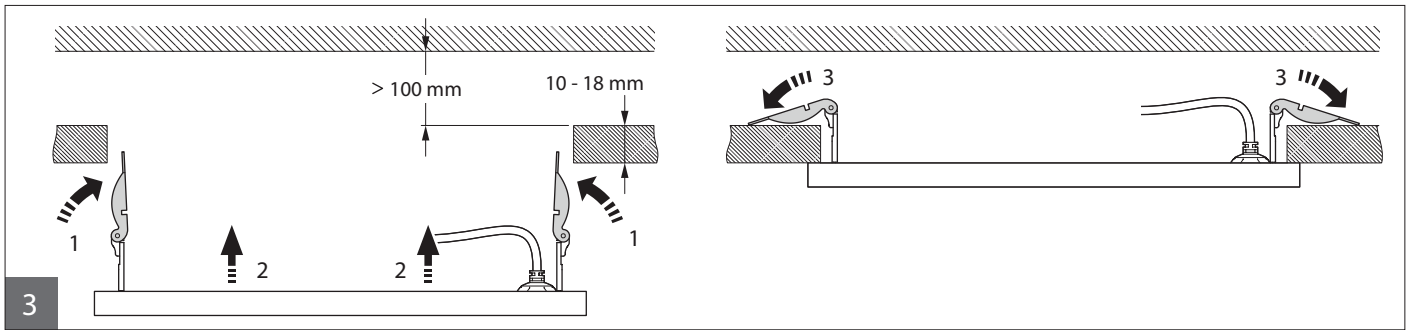
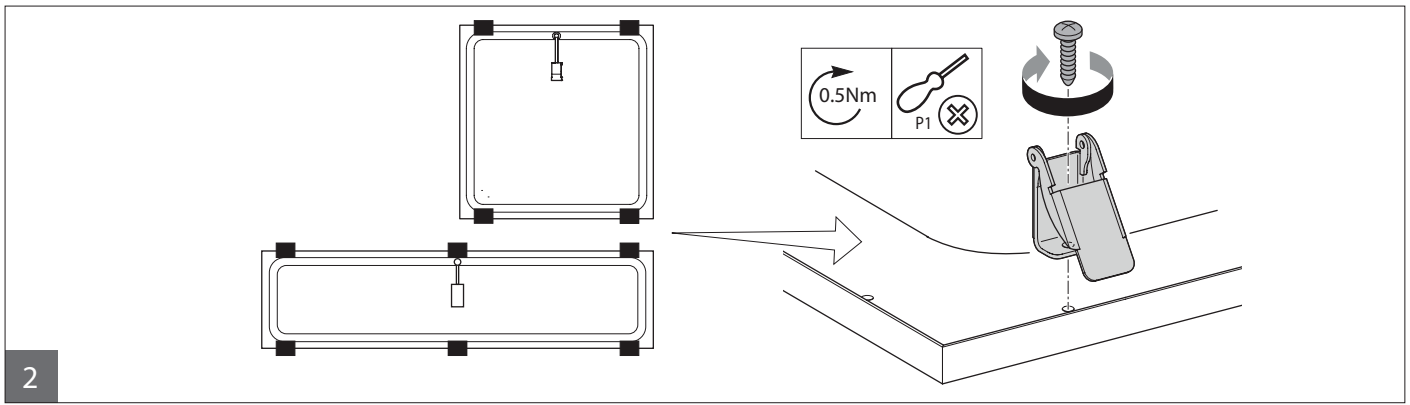
Surface mounted kit:
910930031018 RC125Z SMB W60L60
910930031218 RC125Z SMB W30L120



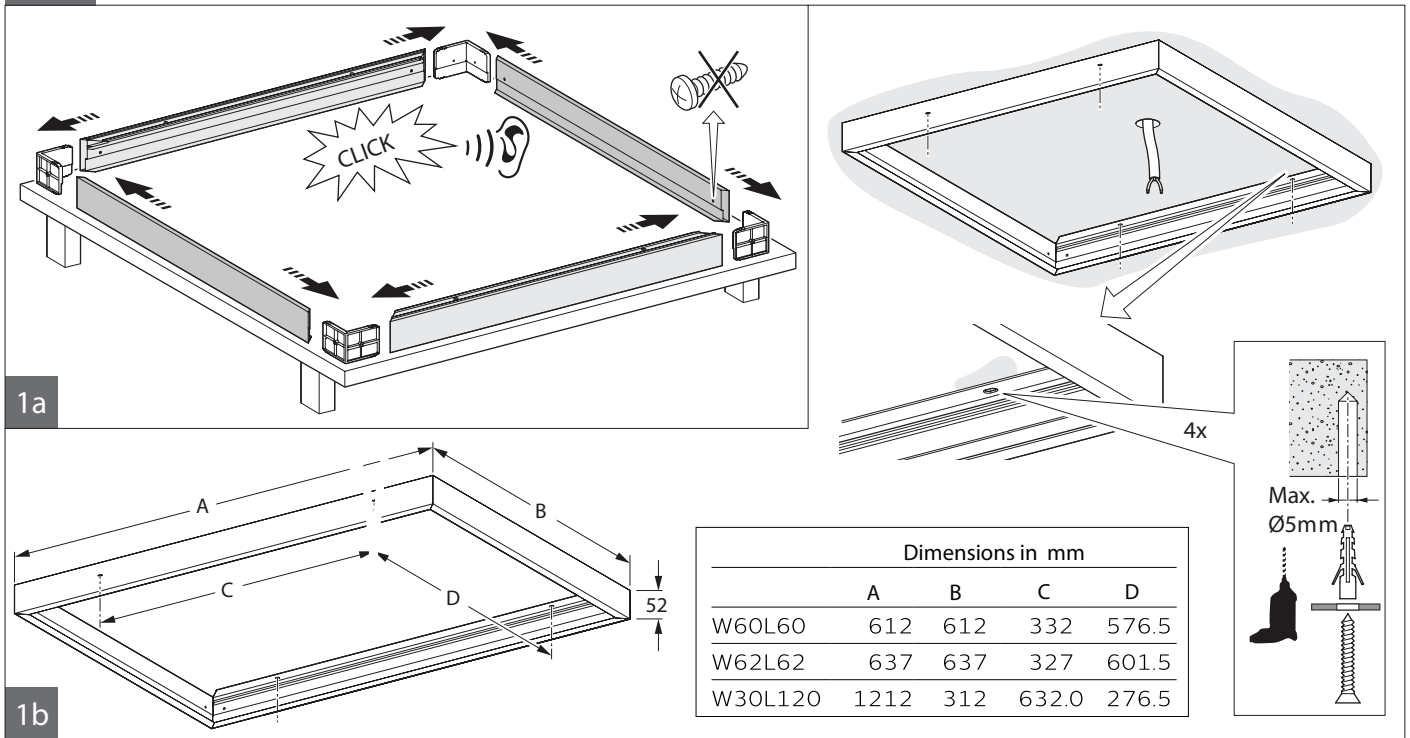
Plaster kit:
910930031318
RC125Z SMB-PLC



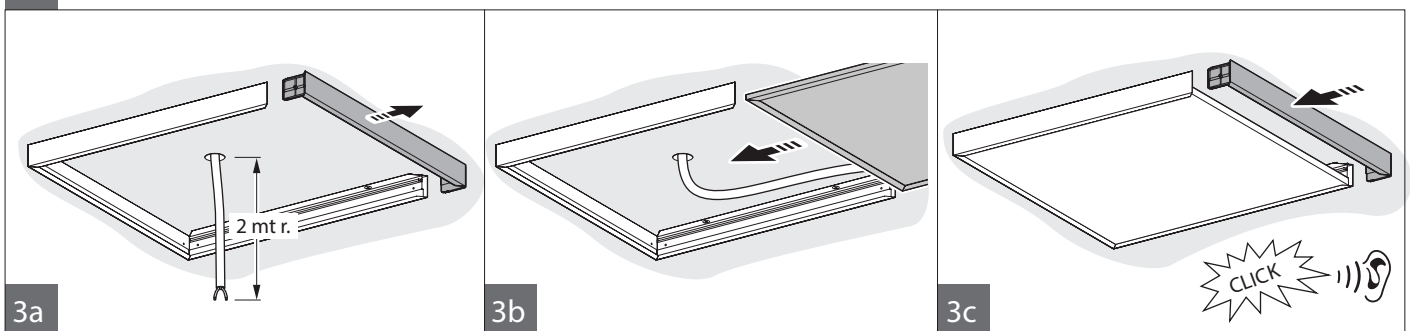




Surface mounted



2 Electrical connections. See relevant installation instruction.

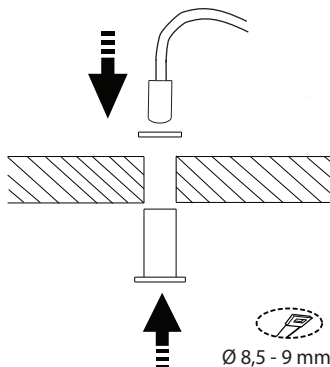




Indicator LED



The indicator LED must be mounted into the ceiling, close to the luminaire

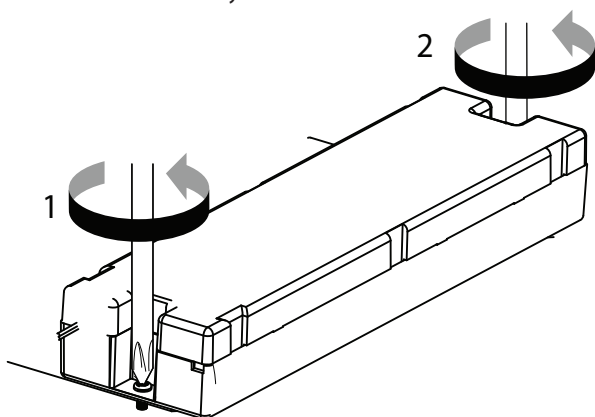


Battery replacement

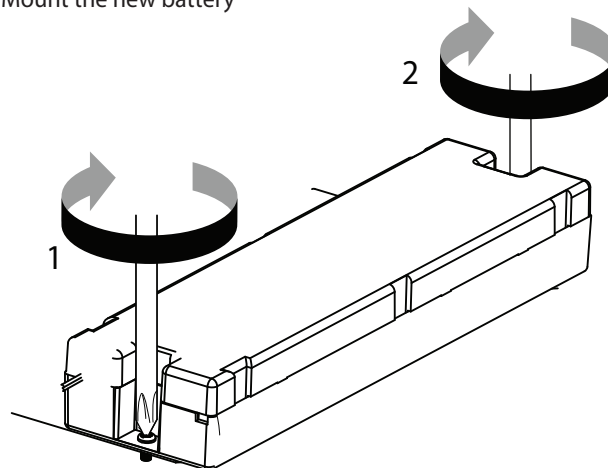
The batteries have a life time expectancy of 4 years when maintained properly. Replace after that time!

1. Disconnect the battery

2. Remove the old battery



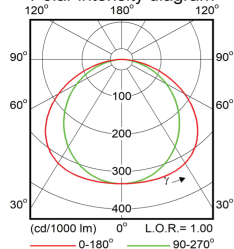
3. Mount the new battery



Rated light output in emergency operation mode: 400lm

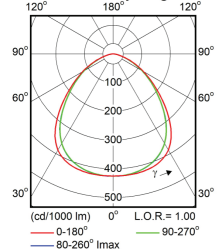
W60L60 NOC

Polar intensity diagram



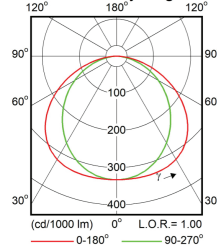
W60L60 OC

Polar intensity diagram



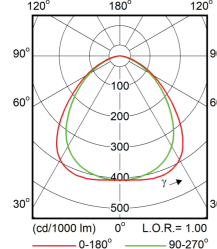
W30L120 NOC

Polar intensity diagram

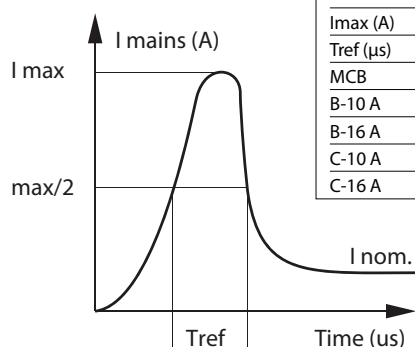


W30L120 OC

Polar intensity diagram



Inrush current



Electrical characteristics

	PSD	IA1	PSU
Imax (A)	20.4	12	16
Tref (µs)	195	250	216
MCB	No. of driver max.		
B-10 A	15	15	22
B-16 A	24	24	36
C-10 A	25	25	37
C-16 A	40	40	61



- The luminaire shall be installed by a qualified electrician and wired in accordance with the latest IEE electrical regulations or the national requirements.
- The light source of this luminaire is not replaceable; when the light source reached its end of life the whole luminaire shall be replaced.
- Please do not remove the protect film before installing to avoid scraping or dirtying the optical part.
- During installation or maintaining the luminaire please use gloves to avoid spots on the cover.
- To remove dirt and spots use the following:
 - Dust: use micro fiber cloths only.
 - Fingerprints, etc.: use a cleaner for synthetic materials with antistatic properties.
- Periodic tests should be performed according to EN 50172:2004, clause 7.2.3 and 7.2.4. Each month the driver is running in emergency mode for 30 seconds.
- Once a year a full discharge cycle of at least 3 hrs. should be performed.