



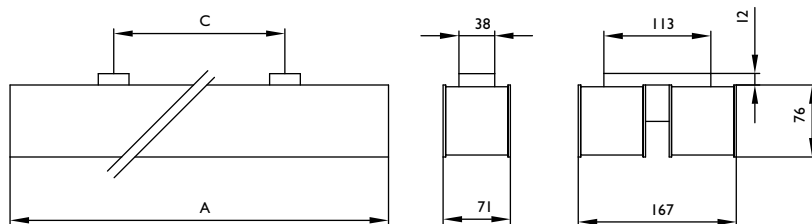
IP20



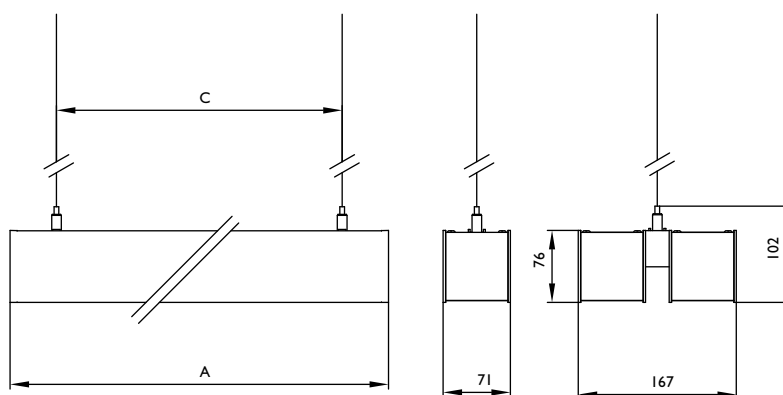
CB

ta
25°

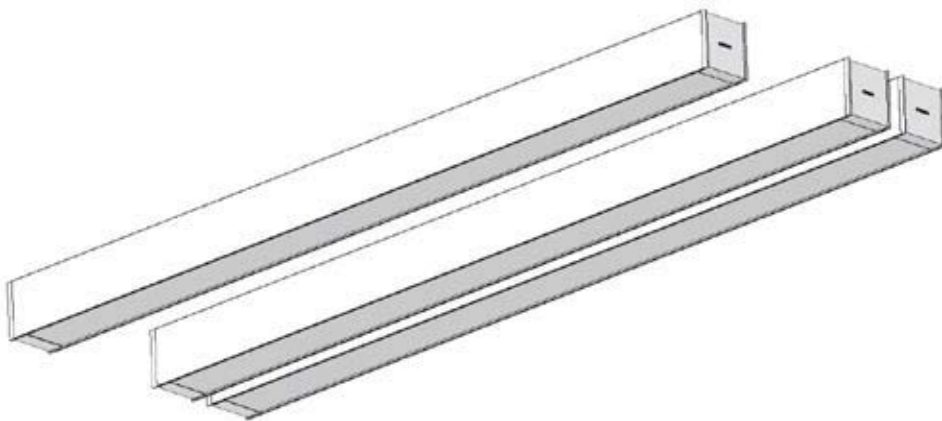
BCS680



BPS680



Width(mm)	A(mm)	BCS-C(mm)	BPS-C(mm)
71	1220	1000	1120
167	1220	1000	808



BCS680

1

2x

Fix suspension brackets onto ceiling
把悬吊支架固定于天花板上

2

Open wire cover
打开接线盖

3

Suspend luminaire by plastic rope attached on bracket
利用支架上的安装塑绳把灯体悬吊于空中

4

Connect power wire (Keep right pole connection)
接线（注意不要接错电极）

5

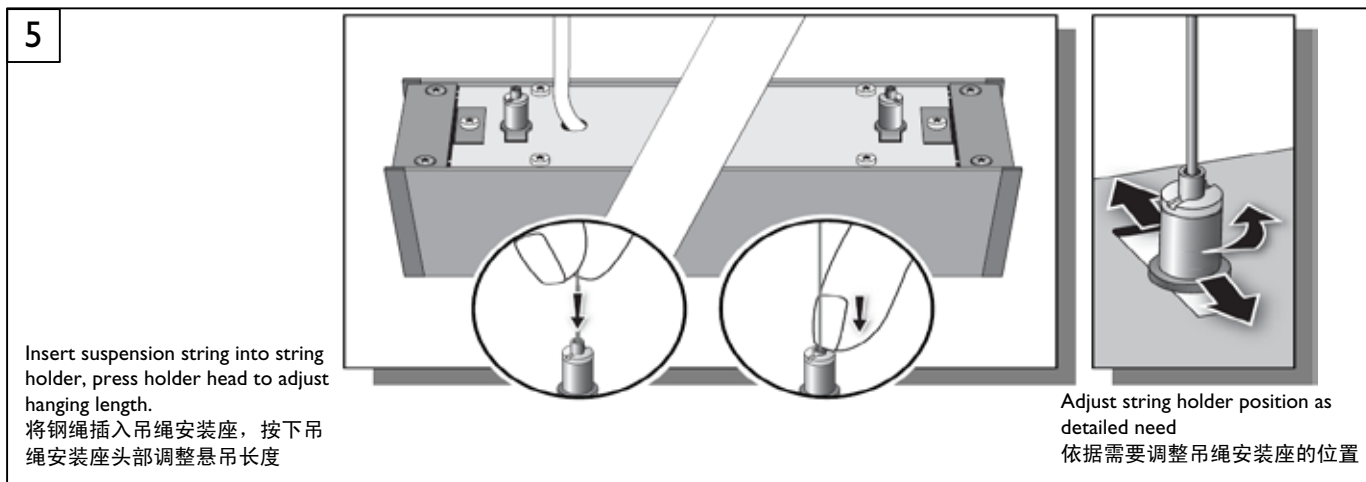
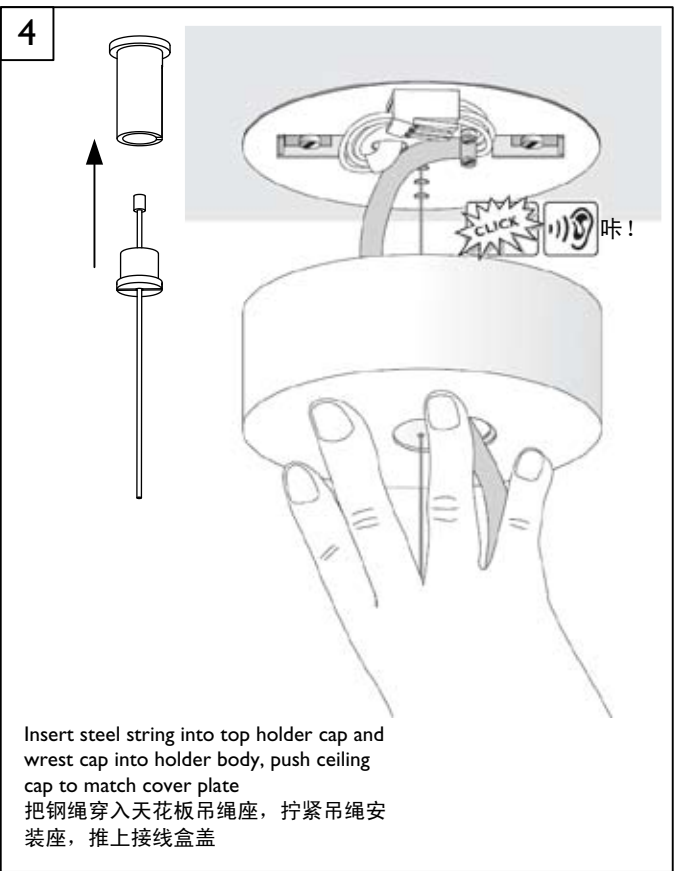
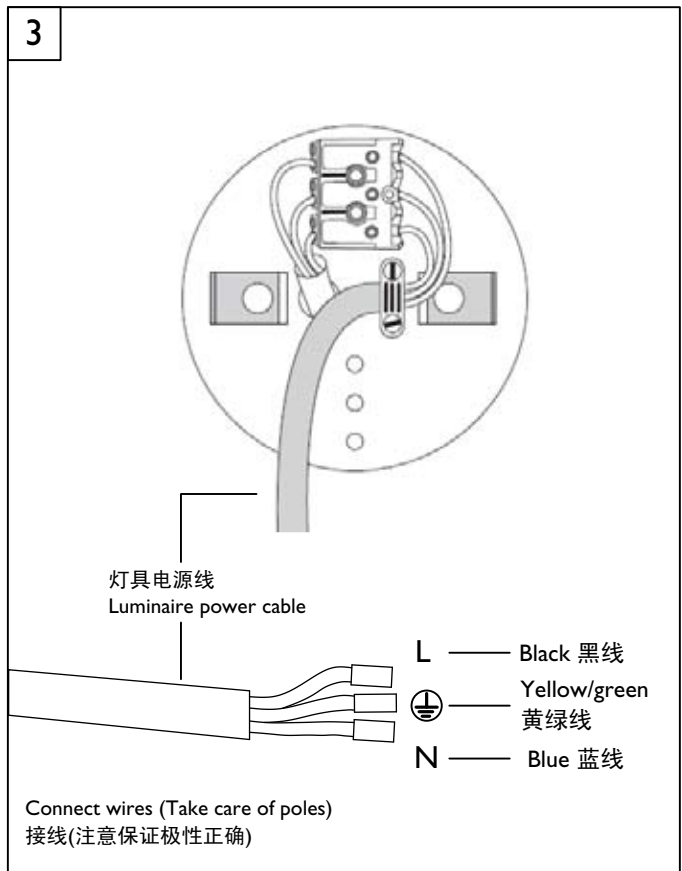
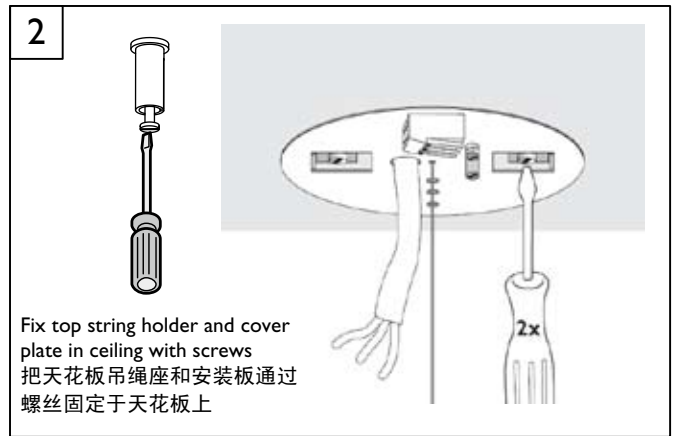
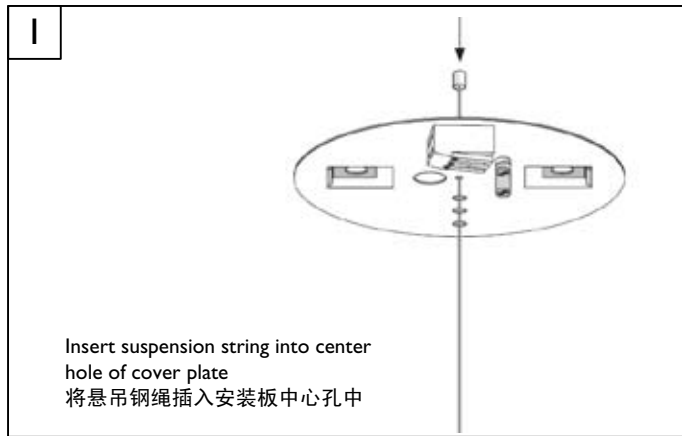
Install wire cover back
装回接线盖

6

Hang luminaire by suspension brackets
把灯挂于安装支架上

咔!

BPS680



Maintenance Instruction

维护指南

- . Please use gloves to avoid spot on optical cover during installing or maintaining luminaire.
安装或维护灯具时，请使用手套，以免污损光学外罩。
- . Do not touch electronic components! ESD sensitive.
避免触碰电子元器件！静电敏感！
- . Do not stare at the LED beam.
避免用眼睛凝视LED光束。
- . This luminaire series should be installed by qualified electrical workers, maintenance or mending please contact local authorized maintainer.
本灯具系列应由有资质的电工安装，维护或维修，请联系专业授权人员。
- . Other general notification regarding luminaire using, please refer to latest IEE and related national standard.
其他通用灯具使用注意事项，请参考IEE或相关国家标准。
- . Indoor use only!
仅限室内使用！