

INSTALLATION INSTRUCTIONS

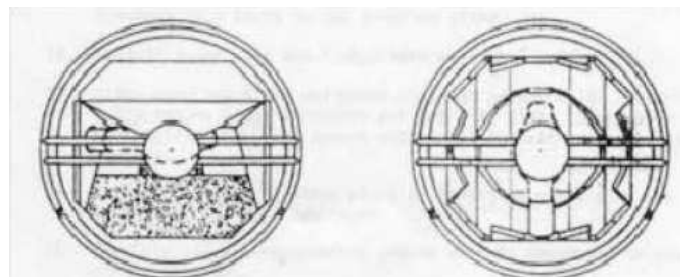
ROUND FORM 10 STYLE CP, MP17, 22

PHILIPS

GARDCO

**IMPORTANT: READ ALL INSTRUCTIONS BEFORE PERFORMING ANY WORK.
BE SURE ALL POWER IS OFF PRIOR TO INSTALLING LUMINAIRES**

SEE PAGE 2 FOR
POLE TENON APPLICATIONS



TYPE FM

TYPES I, III, VQ

RECOMMENDED LAMP/ARM ORIENTATION

INSTALLATION PROCEDURES:

1. Place pole in an elevated horizontal position with the hand hole facing in an upward direction and remove hand hole cover.

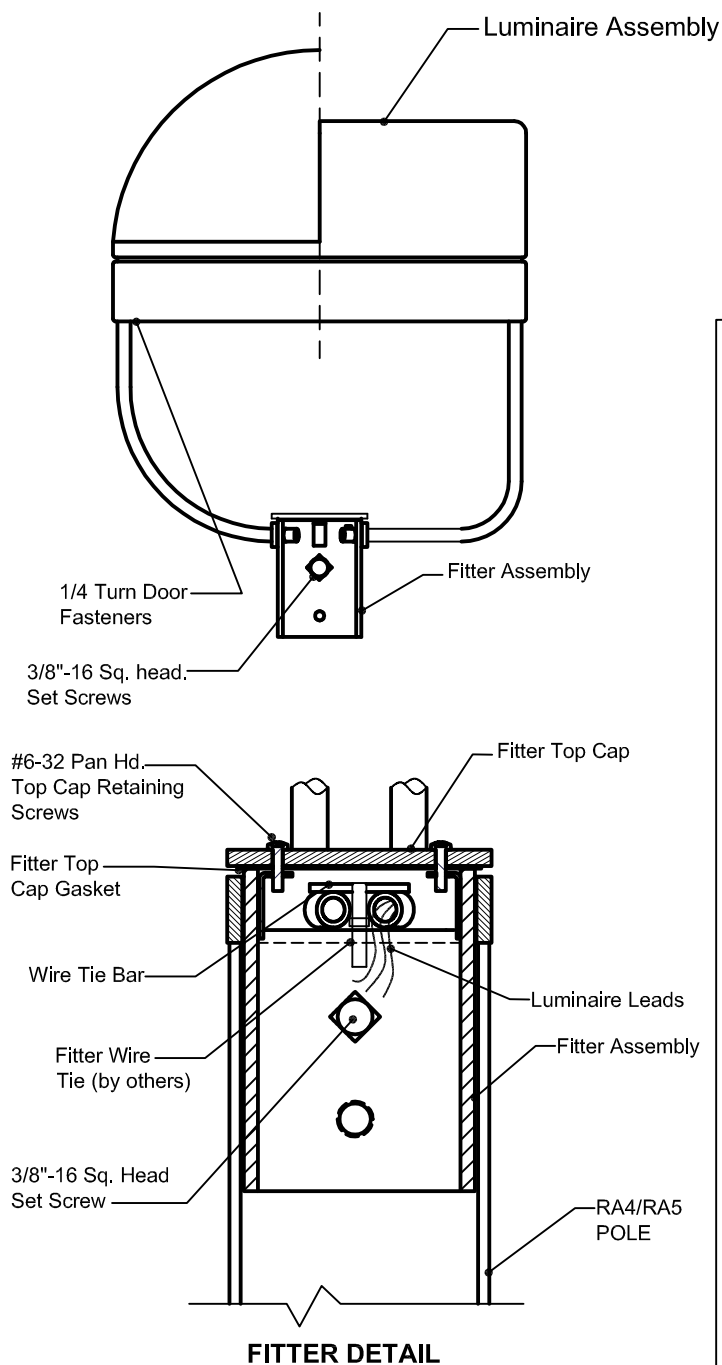
CAUTION: IF POLE BASE COVER IS ONE PIECE, IT MUST BE INSTALLED OVER POLE SHAFT PRIOR TO LUMINAIRE INSTALLATION.

2. Pull field wires through pole allowing sufficient length leads above pole top to make electrical connections.
3. Remove (2) #6-32 top cap retaining screws and remove fitter top cap.

POLE TENON APPLICATIONS: Remove the (3) 3/8"-16 Sq. head set screws. If tenon is 2-3/8" diameter, install tenon adapter as illustrated prior to installing fitter assembly. (See page 2)

4. Determine desired orientation of luminaire reflector ass'y/support arms with respect to pole base hole pattern and mount fitter assembly on pole top or pole tenon. Secure in position with (3) 3/8"-16 Sq. Head Set screws or (6) 3/8"-16 Hex socket set screws.
5. Splice field wires to luminaire leads (input and grounding) and secure with wire tie (by others) to provide adequate strain relief.
6. Replace top cap gasket and top cap on fitter assembly and secure in position with (2) #6-32 top cap retaining screws.
7. Disengage (2) 1/4 turn door fasteners and carefully open luminaire door.
8. Install proper lamp in luminaire. (type is noted on reflector assembly.)
9. Close luminaire door and secure in position by engaging (2) 1/4 turn door fasteners.
10. Install pole per manufactures recommendation checking for proper vertical alignment.
11. Complete all wiring required and reinstall hand hole cover on pole.
12. Energize system.

CAUTION: USE CLEAR LAMP ONLY. Clear lamp required for optimum photometric performance.



FITTER DETAIL

PHILIPS

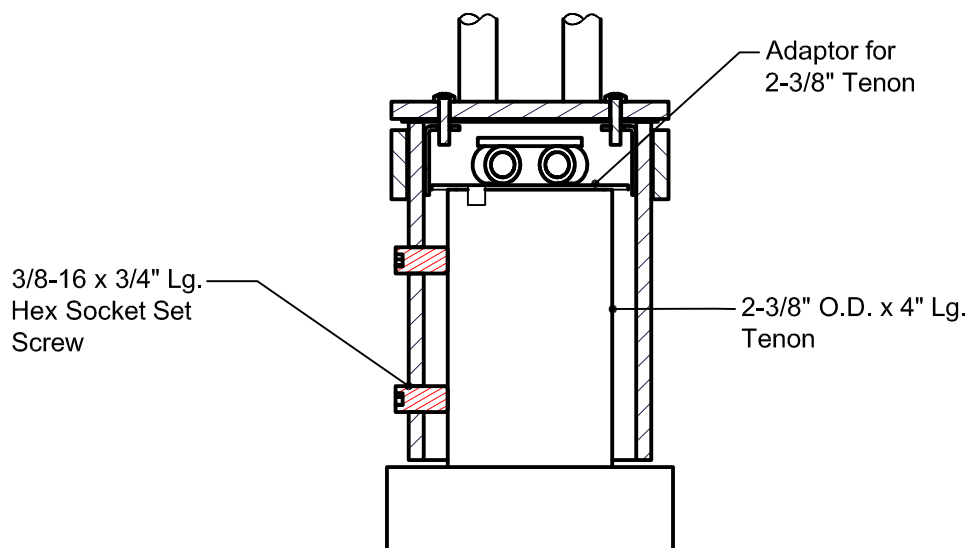
INSTALLATION INSTRUCTIONS

ROUND FORM 10 STYLE CP, MP17, 22

PHILIPS

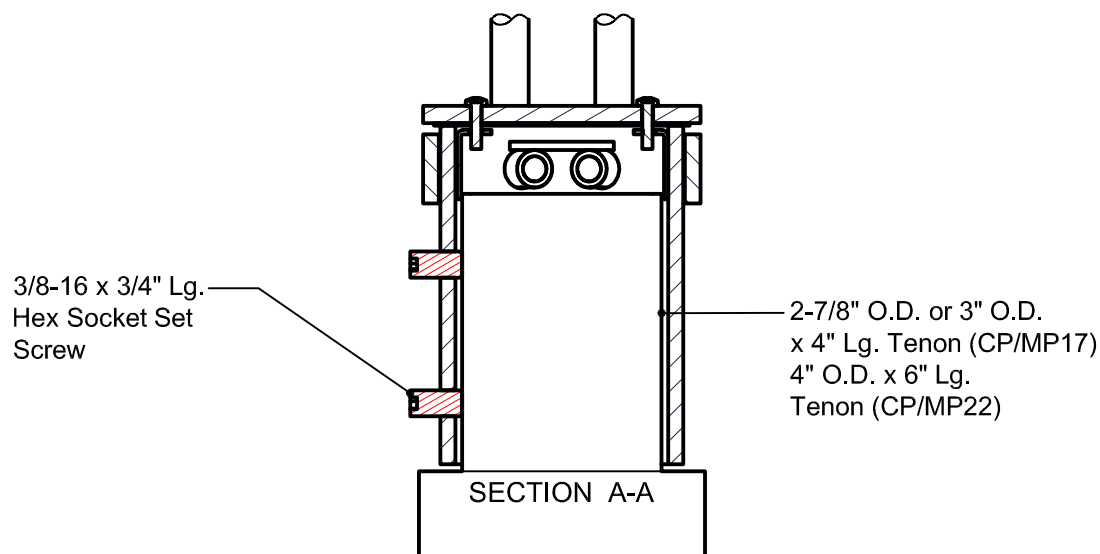


FOR CP/MP 17 UNITS, 4" DIAMETER POLE IS RECOMMENDED.
FOR CP/MP 22 UNITS, 5" DIAMETER POLE IS RECOMMENDED.



CP/MP 17 Luminaires

SCALE 1 / 2



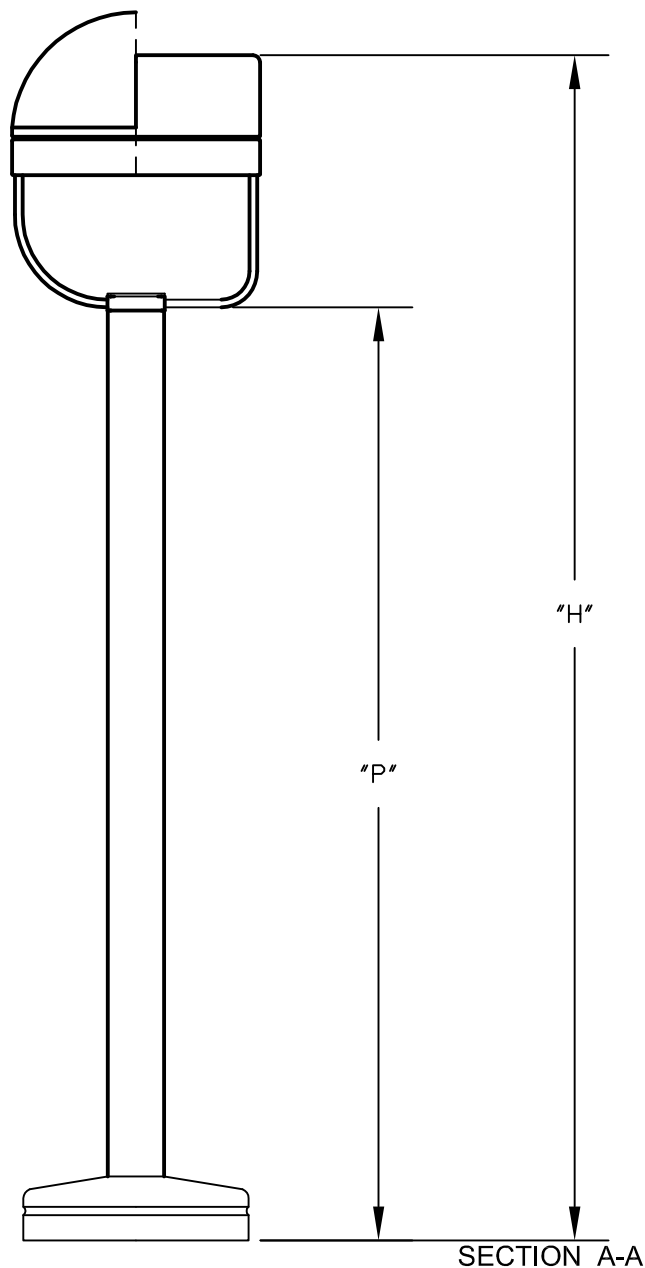
CP/MP 17 Luminaires

or

CP/MP 22 Luminaires

INSTALLATION INSTRUCTIONS

ROUND FORM 10 STYLE CP, MP17, 22



Mtg. Ht "H"	Nominal Pole height "P"	
	4" pole CP/MP 17	5" pole CP/MP 22
8'	6' - 6"	N/A
10'	8' - 6"	8' - 2"
12'	10' - 6"	10' - 2"
15'	13' - 6"	13' - 2"
18'	N/A	16' - 2"
20'	N/A	18' - 2"
25'	N/A	23' - 2"

POLE/LUMINAIRE HEIGHT INFORMATION

