



CoreLine Waterproof

WT120C LED40S/840 PSU L1200 EL3

Coreline Waterproof – – – 840 neutral white – Power supply unit
– Emergency lighting 3 hours duration

CoreLine waterproof delivers on the CoreLine promise of innovative, easy-to-use and high-quality luminaires. CoreLine waterproof products can directly replace traditional waterproof luminaires with fluorescent lamps ranging from 18W up to 58W. With its slim and stylish design, it continues to keep its well-known and appreciated architecture. Installation is quick and easy, all thanks to its efficient design. CoreLine waterproof provides better wide-beam light distribution for straightforward and effective lighting. Interact Ready luminaires with integrated wireless communications are also available in this range, ready to be used with Interact gateways, sensors and software.

Product data

| General Information | | | |
|-------------------------------|-------------------------------------|----------------------|--|
| Number of light sources | 1 pc | Cable | - |
| Lamp family code | - | Protection class IEC | Safety class I |
| Light source color | 840 neutral white | Glow-wire test | Temperature 850 °C, duration 30 s |
| Light source replaceable | No | Flammability mark | For mounting on easily flammable surfaces |
| Number of gear units | 1 unit | CE mark | CE mark |
| Driver/power unit/transformer | Power supply unit | ENEC mark | ENEC mark |
| Driver included | Yes | UL mark | - |
| Optic type | - | Warranty period | 5 years |
| Optical cover/lens type | Polycarbonate bowl/cover | Remarks | *-Per Lighting Europe guidance paper "Evaluating performance of LED based luminaires - January 2018": statistically there is no relevant difference in lumen maintenance between B50 and for example B10. Therefore the median useful life (B50) value also represents the B10 value. |
| Luminaire light beam spread | 110° | | |
| Emergency lighting | Emergency lighting 3 hours duration | | |
| Control interface | - | | |
| Connection | Push-in connector 4-pole | | |

CoreLine Waterproof

| | |
|--|-------------------------------|
| Constant light output | No |
| Number of products on MCB of 16 A type B | 24 |
| RoHS mark | RoHS mark |
| Product family code | WT120C [Coreline Waterproof] |
| Unified glare rating CEN | 24 |

Operating and Electrical

| | |
|--------------------|--------------|
| Input Voltage | 220 to 240 V |
| Input Frequency | 50 to 60 Hz |
| Inrush current | 5.3 A |
| Inrush time | 0.070 ms |
| Power Factor (Min) | 0.9 |

Controls and Dimming

| | |
|----------|----|
| Dimmable | No |
|----------|----|

Mechanical and Housing

| | |
|-----------------------------|-----------------|
| Housing Material | Polycarbonate |
| Reflector material | Steel |
| Optic material | - |
| Optical cover/lens material | Polycarbonate |
| Fixation material | Stainless steel |
| Optical cover/lens finish | Textured |
| Overall length | 1223 mm |
| Overall width | 87 mm |
| Overall height | 96 mm |
| Color | Gray |

Approval and Application

| | |
|------------------------------|---|
| Ingress protection code | IP65 [Dust penetration-protected, jet-proof] |
| Mech. impact protection code | IK08 [5 J vandal-protected] |

Initial Performance (IEC Compliant)

| | |
|-------------------------------------|---------|
| Initial luminous flux (system flux) | 4100 lm |
|-------------------------------------|---------|

| | |
|--------------------------------|----------------------|
| Luminous flux tolerance | +/-10% |
| Initial LED luminaire efficacy | 104 lm/W |
| Init. Corr. Color Temperature | 4000 K |
| Init. Color Rendering Index | ≥80 |
| Initial chromaticity | (0.38, 0.38) SDCM <3 |
| Initial input power | 39.5 W |
| Power consumption tolerance | +/-10% |

Over Time Performance (IEC Compliant)

| | |
|---|-----|
| Control gear failure rate at median useful life 50000 h | 5 % |
| Lumen maintenance at median useful life* 50000 h | L75 |

Application Conditions

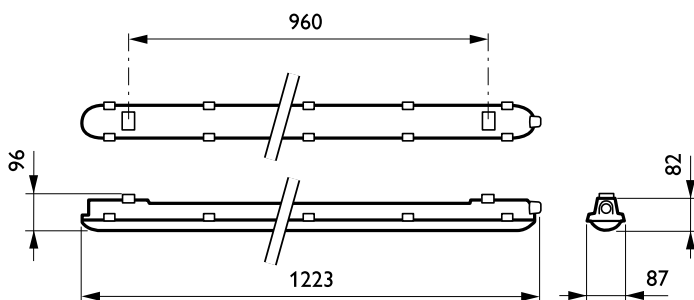
| | |
|------------------------------------|----------------|
| Ambient temperature range | 0 to +25 °C |
| Performance ambient temperature Tq | 25 °C |
| Maximum dim level | Not applicable |
| Suitable for random switching | Yes |

Product Data

| | |
|---------------------------------|---------------------------------|
| Full product code | 871829185419700 |
| Order product name | WT120C LED40S/840 PSU L1200 EL3 |
| EAN/UPC - Product | 8718291854197 |
| Order code | 910500454304 |
| Numerator - Quantity Per Pack | 1 |
| Numerator - Packs per outer box | 1 |
| Material Nr. (12NC) | 910500454304 |
| Net Weight (Piece) | 2.530 kg |

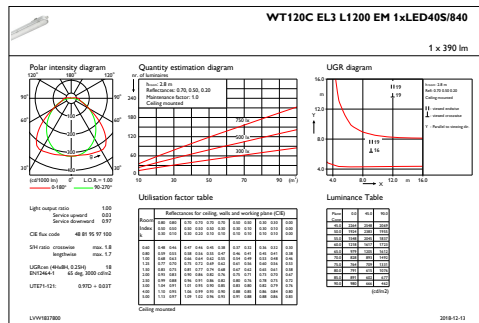


Dimensional drawing

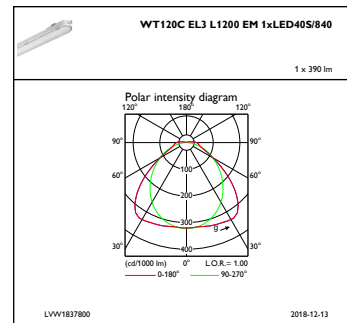


CoreLine Waterproof WT120C

Photometric data



IFGU1_WT120CEL3L1200EM1xLED40S840



IFPC1_WT120CEL3L1200EM1xLED40S840

