



# CoreLine Waterproof

## WT120C LED34S/840 PSU L1500 EL3

Coreline Waterproof, 840 neutral white, Power supply unit (On/Off), Emergency lighting 3 hours duration

Whether for a new building or renovation of an existing space, customers want lighting solutions that provide quality of light and substantial energy and maintenance savings. The new CoreLine Waterproof range of LED products can be used to replace traditional waterproof luminaires with fluorescent lamps. The process of selecting, installing and maintaining is so easy – it's a simple switch.

### Warnings and Safety

- UV radiation will damage the material over time resulting in loss of waterproof sealing and IP66 rating.
- Do not install the luminaire in locations where it will be exposed to direct sunlight.

### Product data

| General Information      |  |                                    |   |
|--------------------------|--|------------------------------------|---|
| Lamp family code         | -  | Service tag                        | Yes                                       |
| Light source replaceable | No   | Product family code                | WT120C [Coreline Waterproof]              |
| Number of gear units     | 1 unit   | Lighting Technology                | LED                                       |
| Driver included          | Yes  | Value ladder                       | Performance                               |
| Feed-through wiring      | Simple Connection and removable cover available for feed-through wiring 1-phase (internal wiring is not included)  | CE mark                            | Yes                                       |
| Remarks                  | *-Per Lighting Europe guidance paper "Evaluating performance of LED based luminaires - January 2018": statistically there is no relevant difference in lumen maintenance between B50 and for example B10. Therefore, the median useful life (B50) value also represents the B10 value. | Warranty period                    | 5 years                                   |
|                          |  | Flammability mark                  | For mounting on easily flammable surfaces |
|                          |  | ENEC mark                          | ENEC mark                                 |
|                          |  | Glow-wire test                     | Temperature 850 °C, duration 30 s         |
|                          |  | EU RoHS compliant                  | Yes                                       |
|                          |  | Light Technical                    |   |
|                          |  | Luminous Flux                      | 3,500 lm                                  |
|                          |  | Correlated Color Temperature (Nom) | 4000 K                                    |

## CoreLine Waterproof

|                                 |                          |
|---------------------------------|--------------------------|
| Luminous Efficacy (rated) (Nom) | 106 lm/W                 |
| Color rendering index (CRI)     | ≥80                      |
| Number of light sources         | 1                        |
| Light source color              | 840 neutral white        |
| Optic type                      | -                        |
| Optical cover type              | Polycarbonate bowl/cover |
| Luminaire light beam spread     | 110°                     |
| Unified glare rating CEN        | 23                       |

### Operating and Electrical

|  |                          |
|--|--------------------------|
| Input Voltage                            | 220 to 240 V             |
| Line Frequency                           | 50 to 60 Hz              |
| Inrush current                           | 19 A                     |
| Inrush time                              | 0.280 ms                 |
| Power Consumption                        | 33 W                     |
| Power Factor (Fraction)                  | 0.9                      |
| Connection                               | Push-in connector 4-pole |
| Cable                                    | -                        |
| Number of products on MCB of 16 A type B | 24                       |

### Temperature

|                           |             |
|---------------------------|-------------|
| Ambient temperature range | 0 to +25 °C |
|---------------------------|-------------|

### Controls and Dimming

|                               |                            |
|-------------------------------|----------------------------|
| Dimmable                      | No                         |
| Driver/power unit/transformer | Power supply unit (On/Off) |
| Constant light output         | No                         |

### Mechanical and Housing

|                        |                 |
|------------------------|-----------------|
| Housing Material       | Polycarbonate   |
| Reflector material     | Steel           |
| Optic material         | -               |
| Optical cover material | Polycarbonate   |
| Fixation material      | Stainless steel |
| Housing Color          | Grey            |
| Optical cover finish   | Textured        |
| Overall length         | 1,504 mm        |

|                                     |                   |
|-------------------------------------|-------------------|
| Overall width                       | 87 mm             |
| Overall height                      | 96 mm             |
| Dimensions (Height x Width x Depth) | 96 x 87 x 1504 mm |

### Approval and Application

|                              |  |
|------------------------------|--|
| Ingress protection code      | IP65 [Dust penetration-protected, jet-proof] |
| Mech. impact protection code | IK08 [5 J vandal-protected]                  |
| Protection class IEC         | Safety class I                               |

### Initial Performance (IEC Compliant)

|                             |                      |
|-----------------------------|----------------------|
| Luminous flux tolerance     | +/-10%               |
| Initial chromaticity        | (0.38, 0.38) SDCM <3 |
| Power consumption tolerance | +/-10%               |

### Over Time Performance (IEC Compliant)

|   |     |
|---|-----|
| Control gear failure rate at median useful life 50000 h | 5 % |
| Lumen maintenance at median useful life* 50000 h        | L75 |

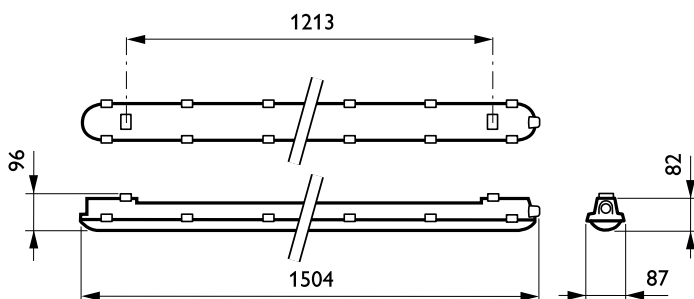
### Application Conditions

|                                    |                |
|------------------------------------|----------------|
| Performance ambient temperature Tq | 25 °C          |
| Maximum dim level                  | Not applicable |
| Suitable for random switching      | Yes            |

### Product Data

|                                 |                                 |
|---------------------------------|---------------------------------|
| Order product name              | WT120C LED34S/840 PSU L1500 EL3 |
| Full product name               | WT120C LED34S/840 PSU L1500 EL3 |
| Full product code               | 871829185420300                 |
| Order code                      | 85420300                        |
| Material Nr. (12NC)             | 910500454305                    |
| Numerator - Quantity Per Pack   | 1                               |
| EAN/UPC - Product/Case          | 8718291854203                   |
| Numerator - Packs per outer box | 1                               |
| EAN/UPC - Case                  | 8718291854203                   |

## Dimensional drawing



## CoreLine Waterproof

