



# CoreLine Waterproof

## WT120C LED40S/840 PSD L1200

Coreline Waterproof, 840 neutral white, Power supply unit with DALI interface

Whether for a new building or renovation of an existing space, customers want lighting solutions that provide quality of light and substantial energy and maintenance savings. The new CoreLine Waterproof range of LED products can be used to replace traditional waterproof luminaires with fluorescent lamps. The process of selecting, installing and maintaining is so easy – it's a simple switch.

### Warnings and Safety

- UV radiation will damage the material over time resulting in loss of waterproof sealing and IP66 rating.
- Do not install the luminaire in locations where it will be exposed to direct sunlight.

### Product data

General Information			
Lamp family code	-	Service tag	Yes
Light source replaceable	No	Product family code	WT120C [Coreline Waterproof]
Number of gear units	1 unit	Lighting Technology	LED
Driver included	Yes	Value ladder	Performance
Feed-through wiring	Simple Connection and removable cover available for feed-through wiring 1-phase (internal wiring is not included)	CE mark	Yes
Remarks	*-Per Lighting Europe guidance paper "Evaluating performance of LED based luminaires - January 2018": statistically there is no relevant difference in lumen maintenance between B50 and for example B10. Therefore, the median useful life (B50) value also represents the B10 value.	Warranty period	5 years
		Flammability mark	For mounting on easily flammable surfaces
		ENEC mark	ENEC mark
		Glow-wire test	Temperature 850 °C, duration 30 s
		EU RoHS compliant	Yes
		Light Technical	
		Luminous Flux	4,100 lm
		Correlated Color Temperature (Nom)	4000 K

## CoreLine Waterproof

Luminous Efficacy (rated) (Nom)	112 lm/W
Color rendering index (CRI)	≥80
Number of light sources	1
Light source color	840 neutral white
Optic type	-
Optical cover type	Polycarbonate bowl/cover
Luminaire light beam spread	110°
Unified glare rating CEN	24

### Operating and Electrical

Input Voltage	220 to 240 V
Line Frequency	50 to 60 Hz
Inrush current	21 A
Inrush time	0.280 ms
Power Consumption	36.5 W
Power Factor (Fraction)	0.9
Connection	Push-in connector 3-pole
Cable	-
Number of products on MCB of 16 A type B	24

### Temperature

Ambient temperature range	-25 to +35 °C
---------------------------	---------------

### Controls and Dimming

Dimmable	Yes
Driver/power unit/transformer	Power supply unit with DALI interface
Control interface	DALI
Constant light output	No

### Mechanical and Housing

Housing Material	Polycarbonate
Reflector material	Steel
Optic material	-
Optical cover material	Polycarbonate
Fixation material	Stainless steel
Housing Color	Grey
Optical cover finish	Textured

Overall length	1,250 mm
Overall width	87 mm
Overall height	96 mm
Dimensions (Height x Width x Depth)	96 x 87 x 1250 mm

### Approval and Application

Ingress protection code	IP65 [Dust penetration-protected, jet-proof]
Mech. impact protection code	IK08 [5 J vandal-protected]
Protection class IEC	Safety class I

### Initial Performance (IEC Compliant)

Luminous flux tolerance	+/-10%
Initial chromaticity	(0.38, 0.38) SDCM <3
Power consumption tolerance	+/-10%

### Over Time Performance (IEC Compliant)

Control gear failure rate at median useful life 50000 h	5 %
Lumen maintenance at median useful life* 50000 h	L75

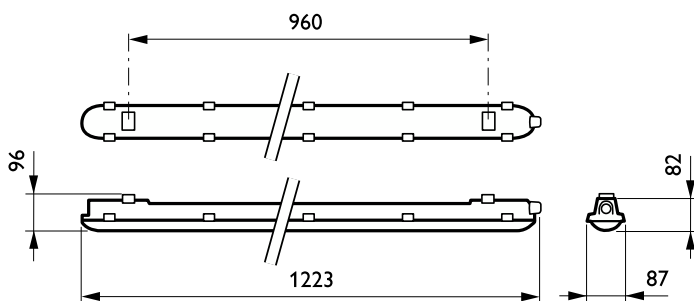
### Application Conditions

Performance ambient temperature Tq	25 °C
Maximum dim level	1%
Suitable for random switching	Yes

### Product Data

Order product name	WT120C LED40S/840 PSD L1200
Full product name	WT120C LED40S/840 PSD L1200
Full product code	871869688309900
Order code	910500458246
Material Nr. (12NC)	910500458246
Numerator - Quantity Per Pack	1
EAN/UPC - Product/Case	8718696883099
Numerator - Packs per outer box	1
EAN/UPC - Case	8718696883099

## Dimensional drawing



## CoreLine Waterproof

