



# CoreLine Waterproof

## WT120C LED22S/840 PSU TW3 L1200

Coreline Waterproof – – 840 neutral white – Power supply unit  
– – mm

CoreLine waterproof delivers on the CoreLine promise of innovative, easy-to-use and high-quality luminaires. CoreLine waterproof products can directly replace traditional waterproof luminaires with fluorescent lamps ranging from 18W up to 58W. With its slim and stylish design, it continues to keep its well-known and appreciated architecture. Installation is quick and easy, all thanks to its efficient design. CoreLine waterproof provides better wide-beam light distribution for straightforward and effective lighting. Interact Ready luminaires with integrated wireless communications are also available in this range, ready to be used with Interact gateways, sensors and software.

### Product data

General Information			
Number of light sources	1 pc	Control interface	-
Lamp family code	-	Connection	Push-in connector 5-pole
Beam angle of light source	120 °	Cable	-
Light source color	840 neutral white	Protection class IEC	Safety class I
Cap-Base	- [-]	Glow-wire test	Temperature 850 °C, duration 30 s
Light source replaceable	No	Flammability mark	For mounting on easily flammable surfaces
Number of gear units	1 unit	CE mark	CE mark
Gear	-	ENEC mark	ENEC mark
Driver/power unit/transformer	Power supply unit	UL mark	-
Driver included	Yes	Warranty period	5 years
Optic type	-	Remarks	*-Per Lighting Europe guidance paper "Evaluating performance of LED based luminaires - January 2018": statistically there is no relevant difference in lumen maintenance between B50 and for example
Luminaire light beam spread	110°		
Emergency lighting	-		

## CoreLine Waterproof

	B10. Therefore the median useful life (B50) value also represents the B10 value.
Constant light output	No
Number of products on MCB of 16 A type B	24
RoHS mark	RoHS mark
Serviceability class	-
Product family code	WT120C [ Coreline Waterproof]
Unified glare rating CEN	23

### Operating and Electrical

Input Voltage	220-240 V
Input Frequency	50 to 60 Hz
Control signal voltage	0-16 V DC DALI
Initial CLO power consumption	- W W
Average CLO power consumption	No W W
End CLO power consumption	- W
Inrush current	8 A
Inrush time	0.060 ms
Power Factor (Min)	0.9

### Controls and Dimming

Dimmable	No
----------	----

### Mechanical and Housing

Housing Material	Polycarbonate
Reflector material	Steel
Optic material	-
Optical cover/lens material	Polycarbonate
Gear tray material	NO
Fixation material	Stainless steel
Optical cover/lens finish	Textured
Overall length	1250 mm
Overall width	87 mm
Overall height	96 mm
Overall diameter	1250 mm
Length	- mm
Width	- mm
Height	96 mm
Diameter	-
Color	Gray

### Approval and Application

Ingress protection code	IP65 [ Dust penetration-protected, jet-proof]
Mech. impact protection code	IK08 [ 5 J vandal-protected]

### Initial Performance (IEC Compliant)

Initial luminous flux (system flux)	2900 lm
Luminous flux tolerance	+/-10%
Initial LED luminaire efficacy	123 lm/W
Init. Corr. Color Temperature	4000 K
Init. Color Rendering Index	≥80
Initial chromaticity	(0.38, 0.38) SDCM <3
Initial input power	23.5 W
Power consumption tolerance	+/-10%

### Over Time Performance (IEC Compliant)

Control gear failure rate at median useful life 50000 h	5 %
Lumen maintenance at median useful life* 50000 h	L75

### Application Conditions

Ambient temperature range	-20 to +35 °C
Performance ambient temperature Tq	25 °C
Maximum dim level	Not applicable
Suitable for random switching	Yes

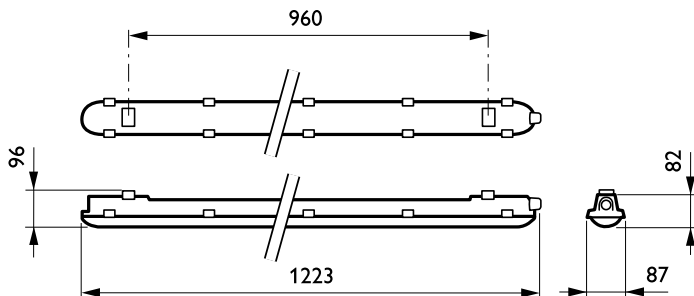
### Product Data

Full product code	871869691685800
Order product name	WT120C LED22S/840 PSU TW3 L1200
EAN/UPC - Product	8718696916858
Order code	910500458794
Numerator - Quantity Per Pack	1
Numerator - Packs per outer box	1
Material Nr. (12NC)	910500458794
Net Weight (Piece)	1.530 kg



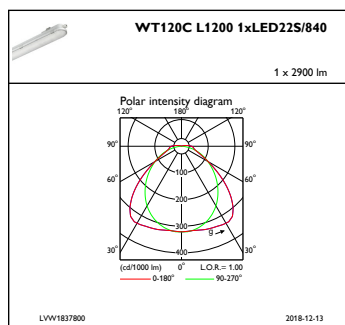
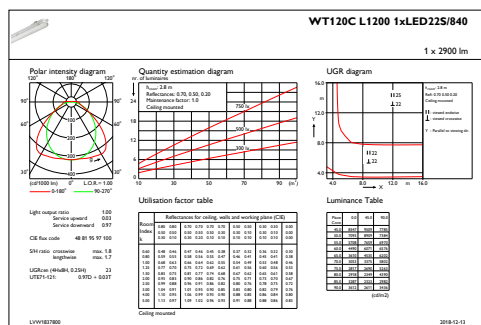
# CoreLine Waterproof

## Dimensional drawing



CoreLine Waterproof WT120C

## Photometric data



IFGU1\_WT120CL12001xLED22S840

IFPC1\_WT120CL12001xLED22S840

