



CoreLine Waterproof

WT120C LED80S/840 PSD L1500

Coreline Waterproof – – – 840 neutral white – Power supply unit with DALI interface – –

CoreLine waterproof delivers on the CoreLine promise of innovative, easy-to-use and high-quality luminaires. CoreLine waterproof products can directly replace traditional waterproof luminaires with fluorescent lamps ranging from 18W up to 58W. With its slim and stylish design, it continues to keep its well-known and appreciated architecture. Installation is quick and easy, all thanks to its efficient design. CoreLine waterproof provides better wide-beam light distribution for straightforward and effective lighting. Interact Ready luminaires with integrated wireless communications are also available in this range, ready to be used with Interact gateways, sensors and software.

Product data

General Information			
Number of light sources	-	Emergency lighting	-
Lamp family code	-	Control interface	DALI
Beam angle of light source	120 °	Connection	Push-in connector 5-pole
Light source color	840 neutral white	Cable	-
Cap-Base	- [-]	Protection class IEC	Safety class I
Light source replaceable	No	Glow-wire test	Temperature 850 °C, duration 30 s
Number of gear units	1 unit	Flammability mark	For mounting on easily flammable surfaces
Gear	-	CE mark	CE mark
Driver/power unit/transformer	Power supply unit with DALI interface	ENEC mark	ENEC mark
Driver included	Yes	Warranty period	5 years
Optic type	-	Remarks	Please download the Lighting - Product Data Sheet for more information and ordering options
Optical cover/lens type	-		
Luminaire light beam spread	110°		

CoreLine Waterproof

Constant light output	No
Number of products on MCB of 16 A type B	18
RoHS mark	RoHS mark
Serviceability class	-
Product family code	WT120C [Coreline Waterproof]
Unified glare rating CEN	26

Operating and Electrical

Input Voltage	220 to 240 V
Input Frequency	50 to 60 Hz
Inrush current	4.5 A
Inrush time	1 ms
Power Factor (Min)	0.9

Controls and Dimming

Dimmable	Yes
----------	-----

Mechanical and Housing

Housing Material	Polycarbonate
Reflector material	Steel
Optic material	-
Optical cover/lens material	Polycarbonate
Gear tray material	NO
Fixation material	Stainless steel
Optical cover/lens finish	Textured
Overall length	1530 mm
Overall width	87 mm
Overall height	96 mm
Color	Gray

Approval and Application

Ingress protection code	IP65 [Dust penetration-protected, jet-proof]
Mech. impact protection code	IK08 [5 J vandal-protected]

Initial Performance (IEC Compliant)

Initial luminous flux (system flux)	8000 lm
-------------------------------------	---------

Luminous flux tolerance	+/-10%
Initial LED luminaire efficacy	118 lm/W
Init. Corr. Color Temperature	4000 K
Init. Color Rendering Index	≥80
Initial chromaticity	(0.38, 0.38) SDCM <3
Initial input power	68 W
Power consumption tolerance	+/-10%

Over Time Performance (IEC Compliant)

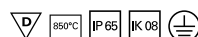
Control gear failure rate at median useful life 50000 h	5 %
Median useful life L70B50	50000 h
Median useful life L80B50	30000 h
Median useful life L90B50	15000 h
Lumen maintenance at median useful life* 50000 h	L75

Application Conditions

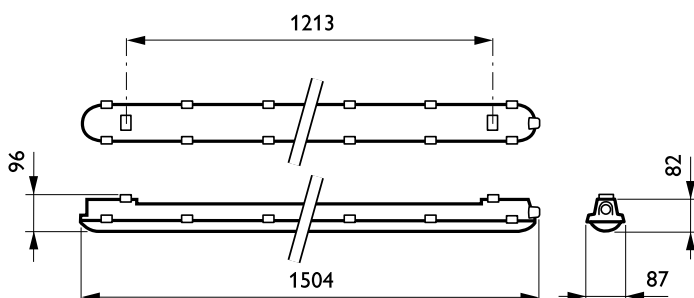
Ambient temperature range	-25 to +35 °C
Performance ambient temperature Tq	25 °C
Maximum dim level	1%
Suitable for random switching	Yes

Product Data

Full product code	871869940929600
Order product name	WT120C LED80S/840 PSD L1500
EAN/UPC - Product	8718699409296
Order code	910500465652
Numerator - Quantity Per Pack	1
Numerator - Packs per outer box	1
Material Nr. (12NC)	910500465652
Net Weight (Piece)	1.820 kg

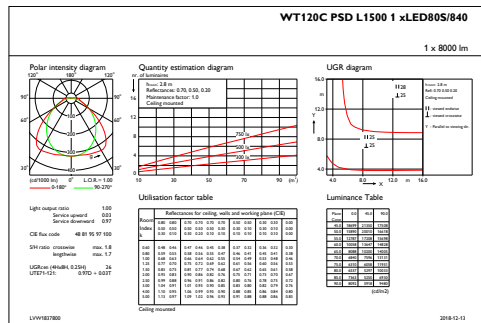


Dimensional drawing

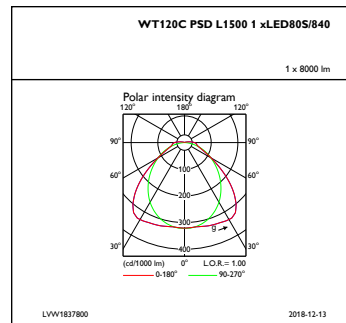


CoreLine Waterproof WT120C

Photometric data



IFGU1_WT120CPSDL15001xLED80S840



IFPC1_WT120CPSDL15001xLED80S840

