



LuxSpace, surface mounted

DN570C LED40S/830 PSU-E C WH

LuxSpace, surface mounted, 34 W, 4200 lm, 3000 K, Frosted

Customers are looking to optimize all their resources, and that means not just their running costs (energy, etc.) but also their human resources. Energy savings are therefore a priority, but they must not have an adverse effect on the well-being of employees, who need a pleasant environment in order to be more productive, or on customers, who want to enjoy their shopping experience. LuxSpace provides the perfect combination of efficiency, light comfort and design, without compromising on lighting performance (color rendering and color uniformity). It offers a wide choice of options for creating the desired ambience, no matter the application.

Product data

General Information		Service tag	Yes
Lamp family code	LED40S [LED module, system flux 4000 lm]	Product family code	DN570C [LUXSPACE 2 COMPACT LOW HEIGHT]
Cap-Base	- [-]	Lighting Technology	LED
Light source replaceable	No	Value ladder	Specification
Number of gear units	1 unit	CE mark	Yes
Gear	-	Warranty period	5 years
Driver included	Yes	Flammability mark	For mounting on normally flammable surfaces
Remarks	*-Per Lighting Europe guidance paper "Evaluating performance of LED based luminaires - January 2018": statistically there is no relevant difference in lumen maintenance between B50 and for example B10. Therefore, the median useful life (B50) value also represents the B10 value.	ENEC mark	ENEC mark
		Glow-wire test	Temperature 850 °C, duration 5 s
		EU RoHS compliant	No

LuxSpace, surface mounted

Light Technical	
Luminous Flux	4,200 lm
Correlated Color Temperature (Nom)	3000 K
Luminous Efficacy (rated) (Nom)	124 lm/W
Color rendering index (CRI)	>80
Light source color	830 warm white
Optic type	High-gloss mirror
Luminaire light beam spread	80°
Unified glare rating CEN	22

Operating and Electrical	
Input Voltage	220-240 V
Line Frequency	50 Hz
Inrush current	14.5 A
Inrush time	0.220 ms
Power Consumption	34 W
Power Factor (Fraction)	0.9
Connection	Push-in connector and pull relief
Cable	-
Number of products on MCB of 16 A type B	32

Temperature	
Ambient temperature range	+10 to +25 °C

Controls and Dimming	
Dimmable	No
Driver/power unit/transformer	Power supply unit DC compatible, external
Constant light output	No

Mechanical and Housing	
Housing Material	Aluminum die cast
Reflector material	Polycarbonate aluminum coated
Optic material	Polycarbonate
Optical cover material	Polycarbonate
Fixation material	Steel
Housing Color	White RAL 9003

Optical cover finish	Frosted
Overall height	217 mm
Overall diameter	250 mm

Approval and Application	
Ingress protection code	IP20 [Finger-protected]
Mech. impact protection code	IK02 [0.2 J standard]
Protection class IEC	Safety class I

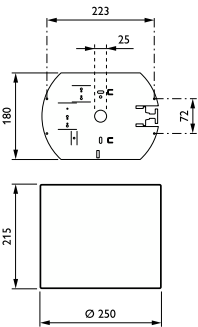
Initial Performance (IEC Compliant)	
Luminous flux tolerance	+/-10%
Initial chromaticity	(0.43, 0.40) SDCM <3
Power consumption tolerance	+/-10%

Over Time Performance (IEC Compliant)	
Control gear failure rate at median useful life 50000 h	5 %
Lumen maintenance at median useful life* 50000 h	L90

Application Conditions	
Performance ambient temperature Tq	25 °C
Suitable for random switching	Yes

Product Data	
Order product name	DN570C LED40S/830 PSU-E C WH
Full product name	DN570C LED40S/830 PSU-E C WH
Full product code	871829194484300
Order code	94484300
Material Nr. (12NC)	910503706709
Numerator - Quantity Per Pack	1
EAN/UPC - Product/Case	8718291944843
Numerator - Packs per outer box	1
EAN/UPC - Case	8718291944843

Dimensional drawing



LuxSpace, surface mounted

