



# TrueLevel, surface mounted

## SM540C LED50S/840 PSD PIP L1480 9003

TrueLevel - LED Module, system flux 5000 lm - 840 neutral white - Power supply unit with DALI interface - - - Push-in connector and pull relief - Signal white - Office compliant version

Today's lighting fixtures need to deliver more than just light. In offices the ideal fixture needs to enable savings, and is expected to be ready for future advances. It must also be ready to be paired with lighting controls and systems. Moreover, the ideal office lighting fixture should also complement the interior design of the office space. Philips TrueLevel fulfills all these requirements and more! Building on the strengths of Philips TrueLine a superior light line technology for offices, TrueLevel's high efficiency, superior office-compliant lighting and readiness to be potentially paired with lighting systems makes it an excellent choice for offices. In addition, TrueLevel's stylish, minimalistic, clean design complements the interior architecture and can become a design element on its own.

### Product data

General Information			
Number of light sources	1 pc	Gear	-
Lamp family code	LED50S [ LED Module, system flux 5000 lm]	Driver/power unit/transformer	Power supply unit with DALI interface
Beam angle of light source	- °	Driver included	Yes
Light source color	840 neutral white	Optic type	-
Cap-Base	- [-]	Optical cover/lens type	Polymethyl methacrylate bowl/cover
Light source replaceable	No	Luminaire light beam spread	100°
Number of gear units	1 unit	Embedded control	-
		Control interface	DALI

## TrueLevel, surface mounted

Connection	Push-in connector and pull relief
Cable	-
Protection class IEC	Safety class I
Standard RAL color	Signal white
Glow-wire test	Temperature 650 °C, duration 5 s
Flammability mark	For mounting on normally flammable surfaces
Type description	Office compliant version
CE mark	CE mark
ENEC mark	ENEC plus mark
UL mark	-
Warranty period	5 years
Remarks	* -Per Lighting Europe guidance paper "Evaluating performance of LED based luminaires - January 2018": statistically there is no relevant difference in lumen maintenance between B50 and for example B10. Therefore the median useful life (B50) value also represents the B10 value.
Constant light output	No
Number of products on MCB of 16 A type B	24
RoHS mark	RoHS mark
WEEE mark	WEEE mark
Accessory PFC	N/A
Product family code	SM540C [ TrueLevel]
Unified glare rating CEN	19

### Operating and Electrical

Input Voltage	220-240 V
Input Frequency	50 to 60 Hz
Control signal voltage	0-16 V DC DALI
Inrush current	19 A
Inrush time	0.28 ms
Power Factor (Min)	0.9

### Controls and Dimming

Dimmable	Yes
----------	-----

### Mechanical and Housing

Geometry	-
Housing Material	Steel
Reflector material	-
Optic material	-
Optical cover/lens material	Polymethyl methacrylate
Gear tray material	Steel

Fixation material	Steel
Optical cover/lens finish	Frosted
Overall length	1480 mm
Overall width	125 mm
Overall height	64 mm
Color	White

### Approval and Application

Ingress protection code	IP40 [ Wire-protected]
Mech. impact protection code	IK02 [ 0.2 J standard]

### Initial Performance (IEC Compliant)

Initial luminous flux (system flux)	5000 lm
Luminous flux tolerance	+/-10%
Initial LED luminaire efficacy	135 lm/W
Init. Corr. Color Temperature	4000 K
Init. Color Rendering Index	≥80
Initial chromaticity	(0.38, 0.38) SDCM <3
Initial input power	37 W
Power consumption tolerance	+/-10%

### Over Time Performance (IEC Compliant)

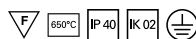
Control gear failure rate at median useful life 50000 h	5 %
Lumen maintenance at median useful life* 50000 h	L80

### Application Conditions

Ambient temperature range	+10 to +40 °C
Performance ambient temperature Tq	25 °C
Maximum dim level	1%
Suitable for random switching	No

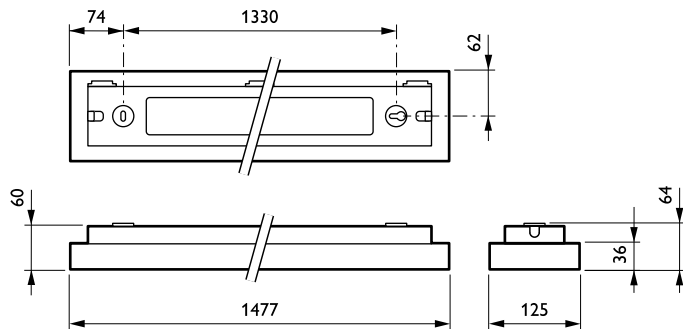
### Product Data

Full product code	871869907114100
Order product name	SM540C LED50S/840 PSD PIP L1480 9003
EAN/UPC - Product	8718699071141
Order code	910504114903
Numerator - Quantity Per Pack	1
Numerator - Packs per outer box	1
Material Nr. (12NC)	910504114903
Net Weight (Piece)	5.500 kg



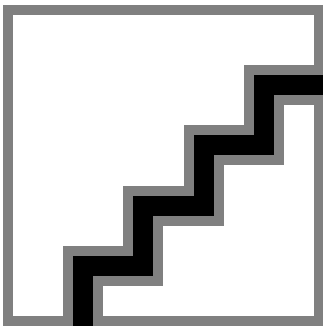
## TrueLevel, surface mounted

### Dimensional drawing

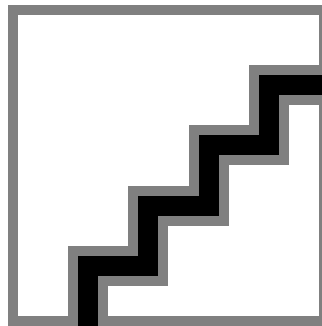


TrueLevel surface mounted SM540C

### Photometric data



IFPC1\_SM540CPSDL14801xLED50S840OC



IFGU1\_SM540CPSDL14801xLED50S840OC

