



# CoreLine Trunking

## LL120X LED90S/840 2x PSD WB 7 VLC WH

CoreLine Trunking, LED module, system flux 9000 lm, Power supply unit with DALI interface, Wide beam

Whether for a new facility or renovation of an existing space, customers want lighting solutions that provide quality of light and substantial energy and maintenance savings. The new CoreLine Trunking range of LED products can be used to replace general lighting. The process of selecting, installing and maintaining is so easy – it's a simple switch.

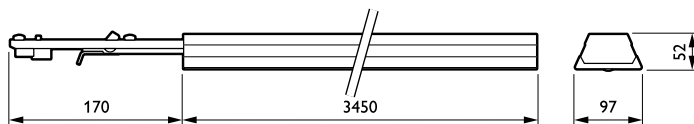
### Product data

General Information		Flammability mark	
Lamp family code	LED90S [LED module, system flux 9000 lm]	For mounting on normally flammable surfaces	
Light source replaceable	No	ENEC mark	
Number of gear units	2 units	Glow-wire test	
Driver included	Yes	Temperature 650 °C, duration 5 s	
Feed-through wiring	Feed-through wiring 7-phase	EU RoHS compliant	
Remarks	*-Per Lighting Europe guidance paper "Evaluating performance of LED based luminaires - January 2018": statistically there is no relevant difference in lumen maintenance between B50 and for example B10. Therefore, the median useful life (B50) value also represents the B10 value.	Yes	
Service tag	Yes	Light Technical	
Product family code	LL120X [CoreLine Trunking]	Luminous Flux	
Lighting Technology	LED	9,000 lm	
CE mark	Yes	Correlated Color Temperature (Nom)	
Warranty period	3 years + 2 years upon registration	4000 K	
		Luminous Efficacy (rated) (Nom)	
		141 lm/W	
		Color rendering index (CRI)	
		≥80	
		Number of light sources	
		6	
		Beam angle of light source	
		120 degree(s)	
		Light source color	
		840 neutral white	
		Optic type	
		Wide beam	
		Optical cover type	
		-	
		Luminaire light beam spread	
		99° x 97°	

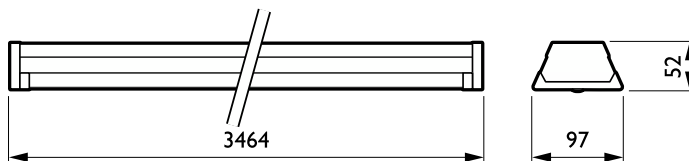
## CoreLine Trunking

Unified glare rating CEN	22
<b>Operating and Electrical</b>	
Input Voltage	220 to 240 V
Line Frequency	50 to 60 Hz
Inrush current	44 A
Inrush time	0.275 ms
Power Consumption	64 W
Power Factor (Fraction)	0.95
Connection	Connection unit 7-pole
Cable	-
Number of products on MCB of 16 A type B	12
<b>Temperature</b>	
Ambient temperature range	-20 to +35 °C
<b>Controls and Dimming</b>	
Dimmable	Yes
Driver/power unit/transformer	Power supply unit with DALI interface
Control interface	DALI
Constant light output	No
<b>Mechanical and Housing</b>	
Housing Material	Steel
Reflector material	-
Optic material	Acrylate
Optical cover material	Acrylate
Fixation material	Steel
Housing Color	White
Optical cover finish	Clear
Overall length	3,450 mm
Overall width	95 mm
Overall height	52 mm
Dimensions (Height x Width x Depth)	52 x 95 x 3450 mm

### Dimensional drawing



<b>Approval and Application</b>	
Ingress protection code	IP20 [Finger-protected]
Mech. impact protection code	IK02 [0.2 J standard]
Protection class IEC	Safety class I
<b>Initial Performance (IEC Compliant)</b>	
Luminous flux tolerance	+/-7%
Initial chromaticity	(0.38, 0.38) SDCM <3
Power consumption tolerance	+/-11%
<b>Over Time Performance (IEC Compliant)</b>	
Control gear failure rate at median useful life 50000 h	5 %
Lumen maintenance at median useful life* L80	50000 h
<b>Application Conditions</b>	
Performance ambient temperature Tq	25 °C
Maximum dim level	1%
Suitable for random switching	No
<b>Product Data</b>	
Order product name	LL120X LED90S/840 2x PSD WB 7 VLC WH
Full product name	LL120X LED90S/840 2x PSD WB 7 VLC WH
Full product code	871829188141400
Order code	88141400
Material Nr. (12NC)	910925772904
Numerator - Quantity Per Pack	1
EAN/UPC - Product/Case	8718291881414
Numerator - Packs per outer box	1
EAN/UPC - Case	8718291881414



## CoreLine Trunking

### Dimensional drawing

