



# CoreLine Trunking

## LL121X LED80S/840 PSU WB TW3 SMB WH KIT

CoreLine Trunking, 3, LED Module, system flux 8000 lm, Power supply unit (On/Off), Wide beam, White

Whether for a new facility or renovation of an existing space, customers want lighting solutions that provide quality of light and substantial energy and maintenance savings. The new CoreLine Trunking range of LED products can be used to replace general lighting. The process of selecting, installing and maintaining is so easy – it's a simple switch.

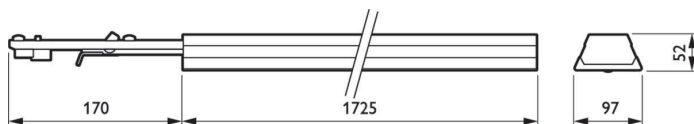
### Product data

General Information		Flammability mark	
Lamp family code	LED80S [LED Module, system flux 8000 lm]	For mounting on normally flammable surfaces	
Light source replaceable	No	ENEC mark	
Number of gear units	1 unit	Glow-wire test	
Driver included	Yes	EU RoHS compliant	
Remarks	*-Per Lighting Europe guidance paper "Evaluating performance of LED based luminaires - January 2018": statistically there is no relevant difference in lumen maintenance between B50 and for example B10. Therefore, the median useful life (B50) value also represents the B10 value.	Light Technical	
Service tag	Yes	Luminous Flux	
Product family code	LL121X [CoreLine Trunking]	Correlated Color Temperature (Nom)	
Lighting Technology	LED	Luminous Efficacy (rated) (Nom)	
CE mark	Yes	Color rendering index (CRI)	
Warranty period	3 years + 2 years upon registration	Number of light sources	
		Beam angle of light source	
		Light source color	
		Optic type	
		Optical cover type	
		Luminaire light beam spread	

## CoreLine Trunking

Unified glare rating CEN	Not applicable
<b>Operating and Electrical</b>	
Input Voltage	220 to 240 V
Line Frequency	50 to 60 Hz
Initial CLO power consumption	- W
Average CLO power consumption	- W
Inrush current	19 A
Inrush time	0.28 ms
Power Consumption	54 W
Power Factor (Fraction)	0.97
Connection	Connection unit 5-pole
Cable	-
Number of products on MCB of 16 A type B	24
<b>Temperature</b>	
Ambient temperature range	-20 to +35 °C
<b>Controls and Dimming</b>	
Dimmable	No
Driver/power unit/transformer	Power supply unit (On/Off)
Control interface	-
Constant light output	No
<b>Mechanical and Housing</b>	
Housing Material	Steel
Reflector material	-
Optic material	Acrylate
Optical cover material	Acrylate
Fixation material	Steel
Housing Color	White
Optical cover finish	Frosted
Overall length	1,730 mm
Overall width	95 mm
Overall height	52 mm
Dimensions (Height x Width x Depth)	52 x 95 x 1730 mm

## Dimensional drawing



<b>Approval and Application</b>	
Ingress protection code	IP20 [Finger-protected]
Mech. impact protection code	IK02 [0.2 J standard]
Protection class IEC	Safety class I
<b>Initial Performance (IEC Compliant)</b>	
Luminous flux tolerance	+/-1%
Initial chromaticity	(0.38, 0.38) SDCM <3
Power consumption tolerance	+/-10%
<b>Over Time Performance (IEC Compliant)</b>	
Control gear failure rate at median useful life 50000 h	5 %
Lumen maintenance at median useful life* 50000 h	L80
<b>Application Conditions</b>	
Performance ambient temperature Tq	25 °C
Maximum dim level	Not applicable
Suitable for random switching	No
<b>Product Data</b>	
Order product name	LL121X LED80S/840 PSU WB TW3 SMB WH KIT
Full product name	LL121X LED80S/840 PSU WB TW3 SMB WH KIT
Full product code	871869638080200
Order code	38080200
Material Nr. (12NC)	910925863959
Numerator - Quantity Per Pack	1
EAN/UPC - Product/Case	8718696380802
Numerator - Packs per outer box	1
EAN/UPC - Case	8718696380802

