



# CoreLine recessed

## RC134B LED27S/830 PSD W60L60 OC

CoreLine recessed, 23 W, 600x600 mm, 2700 lm, 3000 K, DALI, UGR19

Whether for a new building or renovation of an existing space, customers want lighting solutions that provide quality of light and substantial energy and maintenance savings. The new CoreLine Recessed range of LED products can be used to replace functional luminaires in general lighting applications. The process of selecting, installing and maintaining is so easy – it's a simple switch.

### Warnings and Safety

- The product is IPX0 & as such is not protected against water ingress & as such we strongly recommend that The environment in which The luminaire is to be installed is suitably checked
- If the above advice is not taken and the luminaires are subject to water ingress, Philips / Signify cannot guarantee safe failure & product warranty will become void

### Product data

General Information		Lighting Technology	
Light source replaceable	No	Value ladder	Performance
Number of gear units	1 unit	CE mark	Yes
Driver included	Yes	Warranty period	5 years
Remarks	*-Per Lighting Europe guidance paper "Evaluating performance of LED based luminaires - January 2018": statistically there is no relevant difference in lumen maintenance between B50 and for example B10. Therefore, the median useful life (B50) value also represents the B10 value.	Flammability mark	For mounting on normally flammable surfaces
Service tag	Yes	ENEC mark	ENEC mark
Product family code	RC134B [Coreline Recessed]	Glow-wire test	Temperature 850 °C, duration 30 s
		EU RoHS compliant	Yes
		Light Technical	
		Luminous Flux	2,700 lm

## CoreLine recessed

Correlated Color Temperature (Nom)	3000 K
Luminous Efficacy (rated) (Nom)	117 lm/W
Color rendering index (CRI)	≥80
Light source color	830 warm white
Optic type	Wide beam
Luminaire light beam spread	81°
Unified glare rating CEN	19

### Operating and Electrical

Input Voltage	220-240 V
Line Frequency	50 to 60 Hz
Inrush current	14.7 A
Inrush time	0.25 ms
Power Consumption	23 W
Power Factor (Fraction)	0.9
Connection	Push-in connector and pull relief
Cable	-
Number of products on MCB of 16 A type B	38

### Temperature

Ambient temperature range	+10 to +40 °C
---------------------------	---------------

### Controls and Dimming

Dimmable	Yes
Driver/power unit/transformer	Power supply unit with DALI interface
Control interface	DALI
Constant light output	No

### Mechanical and Housing

Housing Material	Steel
Reflector material	Polycarbonate
Optic material	Polycarbonate
Optical cover material	Polycarbonate
Fixation material	-
Housing Color	White
Optical cover finish	Textured
Overall length	597 mm

Overall width	597 mm
Overall height	41 mm
Dimensions (Height x Width x Depth)	41 x 597 x 597 mm

### Approval and Application

Ingress protection code	IP44 [Wire-protected, splash-proof]
Mech. impact protection code	IK02 [0.2 J standard]
Sustainability rating	-
Protection class IEC	Safety class I

### Initial Performance (IEC Compliant)

Luminous flux tolerance	+/-8%
Initial chromaticity	(0.43, 0.40) SDCM <3
Power consumption tolerance	+/-10%

### Over Time Performance (IEC Compliant)

Control gear failure rate at median useful life 50000 h	5 %
Lumen maintenance at median useful life* 50000 h	L75

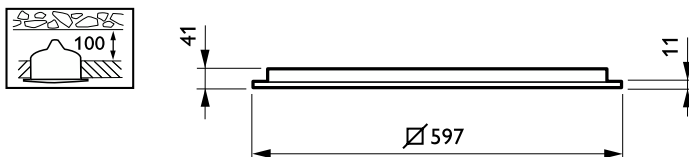
### Application Conditions

Performance ambient temperature Tq	25 °C
Maximum dim level	1%
Suitable for random switching	Yes

### Product Data

Order product name	RC134B LED27S/830 PSD W60L60 OC
Full product name	RC134B LED27S/830 PSD W60L60 OC
Full product code	871869934814400
Order code	34814400
Material Nr. (12NC)	910925864772
Numerator - Quantity Per Pack	1
EAN/UPC - Product/Case	8718699348144
Numerator - Packs per outer box	1
EAN/UPC - Case	8718699348144

## Dimensional drawing



CoreLine recessed

