



# GreenSpace Surface-mounted

## SM291C LED10/840 PSU BK

LED, 10 W, Power supply unit (On/Off), High-gloss mirror, Reflector, 90°

Philips GreenSpace Surface-mounted LED Downlight delivers a superior LED alternative that's up to 66% more energy efficient than the conventional downlight retrofits. Blending seamlessly into its environment, GreenSpace Surface-mounted LED Downlight mimics the form of conventional recessed downlights minus the associated high energy and maintenance costs. Philips GreenSpace Surface-mounted LED Downlight is also ideal for all commercial lighting applications as well as public indoor space where there is limited space in the ceiling.

### Product data

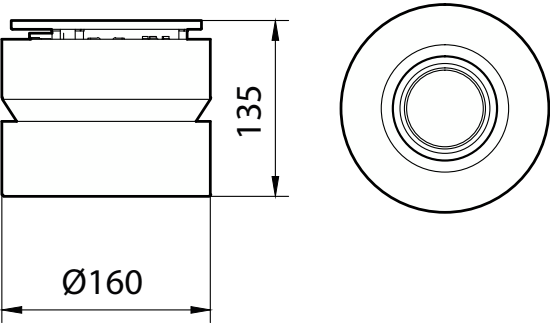
| General Information                |                                  |                             |                   |
|------------------------------------|----------------------------------|-----------------------------|-------------------|
| Light source replaceable           | No                               | Color rendering index (CRI) | >80               |
| Number of gear units               | 1 unit                           | Light source color          | 840 neutral white |
| Driver included                    | Yes                              | Optic type                  | High-gloss mirror |
| Light source engine type           | LED                              | Optical cover type          | Reflector         |
| Service tag                        | Yes                              | Luminaire light beam spread | 90°               |
| CE mark                            | CE mark                          | Operating and Electrical    |                   |
| Warranty period                    | 3 years                          | Input Voltage               | 220 to 240 V      |
| Glow-wire test                     | Temperature 750 °C, duration 5 s | Line Frequency              | 50 or 60 Hz       |
| Light Technical                    |                                  | Inrush current              | 11 A              |
| Luminous Flux                      | 1,000 lm                         | Inrush time                 | 0.003 ms          |
| Correlated Color Temperature (Nom) | 4000 K                           | Power Consumption           | 10 W              |
| Luminous Efficacy (rated) (Nom)    | 100 lm/W                         | Power Factor (Fraction)     | 0.9               |

GreenSpace Surface-mounted

|  |                            |
|--|----------------------------|
| Number of products on MCB of 16 A type B | 30                         |
| Temperature                              |                            |
| Ambient temperature range                | -20 to +40 °C              |
| Controls and Dimming                     |                            |
| Dimmable                                 | No                         |
| Driver/power unit/transformer            | Power supply unit (On/Off) |
| Control interface                        | -                          |
| Constant light output                    | No                         |
| Mechanical and Housing                   |                            |
| Housing Material                         | Aluminum die cast          |
| Reflector material                       | Aluminum                   |
| Optic material                           | Aluminum                   |
| Optical cover material                   | -                          |
| Housing Color                            | Black                      |
| Optical cover finish                     | -                          |
| Overall length                           | 0 mm                       |
| Overall width                            | 0 mm                       |
| Overall height                           | 135 mm                     |
| Overall diameter                         | 160 mm                     |
| Dimensions (Height x Width x Depth)      | 135 x 0 x 0 mm             |
| Approval and Application                 |                            |
| Ingress protection code                  | IP20 [Finger-protected]    |
| Mech. impact protection code             | IK02 [0.2 J standard]      |

|                                       |                         |
|---------------------------------------|-------------------------|
| Protection class IEC                  | Safety class I          |
| Initial Performance (IEC Compliant)   |                         |
| Luminous flux tolerance               | +/-10%                  |
| Initial chromaticity                  | (0.38, 0.38) SDCM <5    |
| Power consumption tolerance           | +/-10%                  |
| Over Time Performance (IEC Compliant) |                         |
| Driver failure rate at 5000 h         | 1.00 %                  |
| Median useful life L70B50             | 50,000 hour(s)          |
| Median useful life L80B50             | 40,000 hour(s)          |
| Median useful life L90B50             | 20,000 hour(s)          |
| Application Conditions                |                         |
| Suitable for random switching         | No                      |
| Product Data                          |                         |
| Order product name                    | SM291C LED10/840 PSU BK |
| Full product name                     | SM291C LED10/840 PSU BK |
| Full product code                     | 911401509231            |
| Order code                            | 911401509231            |
| Material Nr. (12NC)                   | 911401509231            |
| Numerator - Quantity Per Pack         | 1                       |
| Numerator - Packs per outer box       | 1                       |

Dimensional drawing



## GreenSpace Surface-mounted

