



# Essential SmartBright G2 LED Floodlight

## BVP135 LED40/WW 50W 100-240V WB

Essential SmartBright G2 LED floodlight comes with a compact and sturdy design. It is light weight with die-cast aluminum housing and corrosion-proof powder coating, suitable for general outdoor application. High efficiency designed with latest LED technology, achieves substantial energy savings comparing to conventional floodlights.

### Product data

General Information	
Light source color	830 warm white
Light source replaceable	No
Number of gear units	1 unit
Driver included	Yes
Optical cover/lens type	Polycarbonate bowl/cover flat
Luminaire light beam spread	100°
Control interface	-
Connection	Flying leads/wires
Cable	Cable 0.25m without plug
Protection class IEC	Safety class I
CE mark	CE mark
Optic type outdoor	Symmetrical wide beam
Constant light output	No
Light source engine type	LED
Operating and Electrical	
Input Voltage	100 to 240 V
Input Frequency	50 to 60 Hz

Power Factor (Min)	0.9
Controls and Dimming	
Dimmable	No
Mechanical and Housing	
Housing Material	Aluminum die cast
Optical cover/lens material	Polycarbonate
Fixation material	Steel
Mounting device	Mounting bracket adjustable
Optical cover/lens shape	Flat
Optical cover/lens finish	Textured
Overall length	240 mm
Overall width	201 mm
Overall height	38 mm
Effective projected area	0.053 m <sup>2</sup>
Color	Black
Approval and Application	
Ingress protection code	IP65 [ Dust penetration-protected, jet-proof]

# Essential SmartBright G2 LED Floodlight

Mech. impact protection code	IK06 [ 1 J]
------------------------------	-------------

## Initial Performance (IEC Compliant)

Initial luminous flux (system flux)	4000 lm
Luminous flux tolerance	+/-10%
Initial LED luminaire efficacy	80 lm/W
Init. Corr. Color Temperature	3000 K
Init. Color Rendering Index	>80
Initial chromaticity	SDCM <7
Initial input power	50 W
Power consumption tolerance	+/-10%

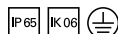
## Application Conditions

Ambient temperature range	-20 to +40 °C
---------------------------	---------------

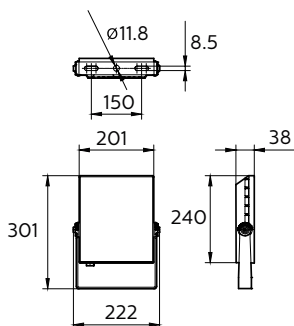
Maximum dim level	Not applicable
-------------------	----------------

## Product Data

Full product code	871016331558499
Order product name	BVP135 LED40/WW 50W 100-240V WB
EAN/UPC - Product	8710163315584
Order code	911401614104
Numerator - Quantity Per Pack	1
Numerator - Packs per outer box	12
Material Nr. (12NC)	911401614104
Net Weight (Piece)	1.150 kg



## Dimensional drawing



BVP131/132/133/135 LED WB

