



# Smart Post-top G3

## BGP161 LED2500/NW PSU 220-240V 7043 IN

Smart Post-top G3, 2500 lm, 29 W, Neutral white, Symmetrical, Safety class I, Post-top for diameter 60 mm

Smart Post Top G3 inherits the classic look and style of the previous generation with improved system efficacy and light quality. The Smart Post Top G3 optimized optical design increases both horizontal and vertical uniformity. The highly efficient thermal system design ensures maximum heat transfer and longer LED service life. This reliable luminaire system operates well in both low and high temperature environments. It offers more than 11 years expected life, reducing maintenance frequency and cost (based on a 50,000 hour rated life and 12 hours operation per day). It provides a comfortable and safe atmosphere to gardens, residential areas, courtyards, side streets, squares, parks & playgrounds.

### Product data

General Information		Operating and Electrical	
Lamp family code	-	Luminous Flux	2,500 lm
Light source replaceable	Yes	Standard tilt angle posttop	-
Number of gear units	1 unit	Standard tilt angle side entry	-
Driver included	Yes	Correlated Color Temperature (Nom)	4000 K
Light source engine type	LED	Luminous Efficacy (rated) (Nom)	86.21 lm/W
CE mark	-	Color rendering index (CRI)	70
Warranty period	3 years	Light source color	Neutral white
Flammability mark	-	Optical cover type	Acrylate cover and semi-matt high-reflective optic
ENEC mark	-	Luminaire light beam spread	-
EU RoHS compliant	Yes	Optic type outdoor	Symmetrical
Light Technical		Input Voltage	220 to 240 V
Upward light output ratio	0		

## Smart Post-top G3

Line Frequency	50 to 60 Hz
Inrush current	2.1 A
Inrush time	22.3 ms
Power Consumption	29 W
Power Factor (Fraction)	0.9
Connection	Flying leads/wires
Cable	Cable 0.45 m without plug
Number of products on MCB of 16 A type B -	

### Temperature

Ambient temperature range	-40 to +50 °C
---------------------------	---------------

### Controls and Dimming

Dimmable	No
Driver/power unit/transformer	Power supply unit (On/Off)
Control interface	-
Constant light output	No

### Mechanical and Housing

Housing Material	Aluminum die cast
Reflector material	Acrylate
Optic material	Acrylate
Optical cover material	Acrylate
Fixation material	Stainless steel
Housing Color	Dark gray
Mounting device	Post-top for diameter 60 mm
Optical cover shape	Flat
Optical cover finish	Frosted
Overall height	265 mm

Overall diameter	578 mm
------------------	--------

### Approval and Application

Ingress protection code	IP65 [Dust penetration-protected, jet-proof]
Mech. impact protection code	IK07 [2 J reinforced]
Surge Protection (Common/Differential)	4/2 kV
Protection class IEC	Safety class I

### Initial Performance (IEC Compliant)

Luminous flux tolerance	+/-10%
Initial chromaticity	SDCM>5
Power consumption tolerance	+/-10%

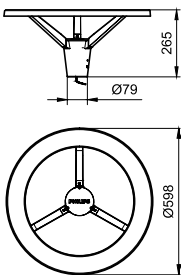
### Application Conditions

Maximum dim level	Not applicable
-------------------	----------------

### Product Data

Order product name	BGP161 LED2500/NW PSU 220-240V 7043
	IN
Full product name	BGP161 LED2500/NW PSU 220-240V 7043
	IN
Full product code	911401633703
Order code	911401633703
Material Nr. (12NC)	911401633703
Numerator - Quantity Per Pack	1
Numerator - Packs per outer box	2

## Dimensional drawing



## Smart Post-top G3

