



# UniFlood C

## BVP322 18LED RGB 220V 40 DMX

UniFlood C is a circular-shaped, exterior-rated and cost-effective architectural LED floodlight that is designed for façade, landscape and outdoor flood lighting applications. The robust mechanical design and high-efficiency optical design make it ideal for illuminating multi-storey exterior facades, bridges, landmarks and monuments. Available in white, monochromatic colours, RGB, RGBW and tunable white. Six different spread lenses, ranging from narrow spot to wide flood, and a DMX512/RDM control option available to give architects and designers the freedom to explore a wide range of concepts and design with no limitations.

### Product data

| General Information           |  |
|-------------------------------|--|
| Lamp colour code              | Red, green and blue (RGB)  |
| Light source replaceable      | No   |
| Number of gear units          | 1 unit   |
| Driver/power unit/transformer | PSDMX [ Power supply unit with DMX interface]                            |
| Driver included               | Yes  |
| Optical cover/lens type       | FG [ Flat glass]   |
| Luminaire light beam spread   | 40°  |
| Connection                    | Flying leads/wires and 2 push-in connectors 4-pole                       |
| Cable                         | Cable 0.5 m without plug 3-pole and 2 cables 0.5 m with connector 4-pole |
| Protection class IEC          | Safety class I (I)   |
| Flammability mark             | F [ For mounting on normally flammable surfaces]                         |
| CE mark                       | CE mark  |
| Constant light output         | No   |
| Number of products on MCB     | 6  |
| LED engine type               | LED  |

| Operating and Electrical |              |
|--------------------------|--------------|
| Input voltage            | 220 to 240 V |
| Input frequency          | 50 to 60 Hz  |
| Inrush current           | 40 A         |
| Inrush time              | 0.45 ms      |
| Power factor (min.)      | 0.9          |

| Controls and Dimming |     |
|----------------------|-----|
| Dimmable             | Yes |

| Mechanical and Housing      |                                    |
|-----------------------------|------------------------------------|
| Housing material            | Aluminum die-cast                  |
| Optic material              | Polymethyl methacrylate            |
| Optical cover/lens material | Tempered glass                     |
| Fixation material           | Steel                              |
| Mounting device             | MBA [ Mounting bracket adjustable] |
| Optical cover/lens shape    | Flat                               |
| Optical cover/lens finish   | Clear                              |
| Overall length              | 258 mm                             |

# UniFlood C

|                  |           |
|------------------|-----------|
| Overall width    | 210 mm    |
| Overall height   | 157 mm    |
| Overall diameter | 210 mm    |
| Colour           | Dark Grey |

## Approval and Application

|                              |   |
|------------------------------|---|
| Ingress protection code      | IP66 [ Dust penetration-protected, jet-proof] |
| Mech. impact protection code | IK06 [ 1 J]                                   |

## Initial Performance (IEC Compliant)

|                                |         |
|--------------------------------|---------|
| Initial luminous flux          | 1345 lm |
| Luminous flux tolerance        | +/-10%  |
| Initial LED luminaire efficacy | 37 lm/W |
| Lamp colour temperature        | - K     |
| Colour Rendering Index         | -       |
| Initial input power            | 36 W    |
| Power consumption tolerance    | +/-10%  |

## Application Conditions

|                           |               |
|---------------------------|---------------|
| Ambient temperature range | -40 to +50 °C |
| Maximum dimming level     | 1%            |

## Product Data

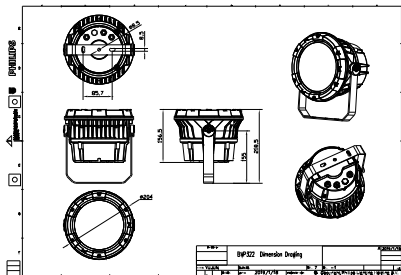
|                                 |                              |
|---------------------------------|------------------------------|
| Full product code               | 911401740082                 |
| Order product name              | BVP322 18LED RGB 220V 40 DMX |
| Order code                      | 911401740082                 |
| Numerator – quantity per pack   | 1                            |
| Numerator – packs per outer box | 2                            |
| Material no. (12NC)             | 911401740082                 |
| Net weight (piece)              | 4.099 kg                     |



## Warnings and Safety

- For outdoor use only

## Dimensional drawing



BVP322/323/324

