



# UniFlood C

## BVP323 36LED 27K 220V 8

UniFlood C is a circular-shaped, exterior-rated and cost-effective architectural LED floodlight that is designed for façade, landscape and outdoor flood lighting applications. The robust mechanical design and high-efficiency optical design make it ideal for illuminating multi-storey exterior facades, bridges, landmarks and monuments. Available in white, monochromatic colours, RGB, RGBW and tunable white. Six different spread lenses, ranging from narrow spot to wide flood, and a DMX512/RDM control option available to give architects and designers the freedom to explore a wide range of concepts and design with no limitations.

### Product data

| General Information           |  |
|-------------------------------|--|
| Lamp colour code              | Warm white                                       |
| Light source replaceable      | No   |
| Number of gear units          | 1 unit   |
| Driver/power unit/transformer | PSU [ Power supply unit]                         |
| Driver included               | Yes  |
| Optical cover/lens type       | FG [ Flat glass]                                 |
| Luminaire light beam spread   | 8°   |
| Control interface             | -  |
| Connection                    | Flying leads/wires                               |
| Cable                         | Cable 0.5 m without plug 3-pole                  |
| Protection class IEC          | Safety class I (I)                               |
| Flammability mark             | F [ For mounting on normally flammable surfaces] |
| CE mark                       | CE mark  |
| Constant light output         | No   |
| Number of products on MCB     | 4  |
| LED engine type               | LED  |

| Operating and Electrical |              |
|--------------------------|--------------|
| Input voltage            | 220 to 240 V |
| Input frequency          | 50 to 60 Hz  |
| Inrush current           | 60 A         |
| Inrush time              | 0.65 ms      |
| Power factor (min.)      | 0.9          |

| Controls and Dimming |    |
|----------------------|----|
| Dimmable             | No |

| Mechanical and Housing      |                                    |
|-----------------------------|------------------------------------|
| Housing material            | Aluminum die-cast                  |
| Optic material              | Polymethyl methacrylate            |
| Optical cover/lens material | Tempered glass                     |
| Fixation material           | Steel                              |
| Mounting device             | MBA [ Mounting bracket adjustable] |
| Optical cover/lens shape    | Flat                               |
| Optical cover/lens finish   | Clear                              |
| Overall length              | 315 mm                             |

# UniFlood C

|                  |           |
|------------------|-----------|
| Overall width    | 262 mm    |
| Overall height   | 169 mm    |
| Overall diameter | 262 mm    |
| Colour           | Dark Grey |

## Approval and Application

|                              |   |
|------------------------------|---|
| Ingress protection code      | IP66 [ Dust penetration-protected, jet-proof] |
| Mech. impact protection code | IK06 [ 1 J]                                   |

## Initial Performance (IEC Compliant)

|                                |          |
|--------------------------------|----------|
| Initial luminous flux          | 4330 lm  |
| Luminous flux tolerance        | +/-10%   |
| Initial LED luminaire efficacy | 54 lm/W  |
| Lamp colour temperature        | 2700 K   |
| Colour Rendering Index         | 80       |
| Initial chromaticity           | SDCM = 4 |
| Initial input power            | 80 W     |

|                             |        |
|-----------------------------|--------|
| Power consumption tolerance | +/-10% |
|-----------------------------|--------|

## Application Conditions

|                           |               |
|---------------------------|---------------|
| Ambient temperature range | -40 to +50 °C |
|---------------------------|---------------|

## Product Data

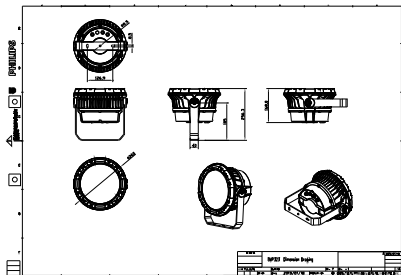
|                                 |                         |
|---------------------------------|-------------------------|
| Full product code               | 911401740522            |
| Order product name              | BVP323 36LED 27K 220V 8 |
| Order code                      | 911401740522            |
| Numerator – quantity per pack   | 1                       |
| Numerator – packs per outer box | 2                       |
| Material no. (12NC)             | 911401740522            |
| Net weight (piece)              | 5.199 kg                |



## Warnings and Safety

- For outdoor use only

## Dimensional drawing



BVP322/323/324

