



# UniFlood C

## BVP323 36LED RGB 220V 15 DMX

UniFlood C is a circular-shaped, exterior-rated and cost-effective architectural LED floodlight that is designed for façade, landscape and outdoor flood lighting applications. The robust mechanical design and high-efficiency optical design make it ideal for illuminating multi-storey exterior facades, bridges, landmarks and monuments. Available in white, monochromatic colours, RGB, RGBW and tunable white. Six different spread lenses, ranging from narrow spot to wide flood, and a DMX512/RDM control option available to give architects and designers the freedom to explore a wide range of concepts and design with no limitations.

### Product data

General Information	
Lamp colour code	Red, green and blue (RGB)
Light source replaceable	No
Number of gear units	1 unit
Driver/power unit/transformer	PSDMX [ Power supply unit with DMX interface]
Driver included	Yes
Optical cover/lens type	FG [ Flat glass]
Luminaire light beam spread	15°
Connection	Flying leads/wires and 2 push-in connectors 4-pole
Cable	Cable 0.5 m without plug 3-pole and 2 cables 0.5 m with connector 4-pole
Protection class IEC	Safety class I (I)
Flammability mark	F [ For mounting on normally flammable surfaces]
CE mark	CE mark
Constant light output	No
Number of products on MCB	4
LED engine type	LED

Operating and Electrical	
Input voltage	220 to 240 V
Input frequency	50 to 60 Hz
Inrush current	60 A
Inrush time	0.65 ms
Power factor (min.)	0.9

Controls and Dimming	
Dimmable	Yes

Mechanical and Housing	
Housing material	Aluminum die-cast
Optic material	Polymethyl methacrylate
Optical cover/lens material	Tempered glass
Fixation material	Steel
Mounting device	MBA [ Mounting bracket adjustable]
Optical cover/lens shape	Flat
Optical cover/lens finish	Clear
Overall length	315 mm

# UniFlood C

Overall width	262 mm
Overall height	169 mm
Overall diameter	262 mm
Colour	Dark Grey

## Approval and Application

Ingress protection code	IP66 [ Dust penetration-protected, jet-proof]
Mech. impact protection code	IK06 [ 1 J]

## Initial Performance (IEC Compliant)

Initial luminous flux	3515 lm
Luminous flux tolerance	+/-10%
Initial LED luminaire efficacy	44 lm/W
Lamp colour temperature	- K
Colour Rendering Index	-
Initial input power	80 W
Power consumption tolerance	+/-10%

## Application Conditions

Ambient temperature range	-40 to +50 °C
Maximum dimming level	1%

## Product Data

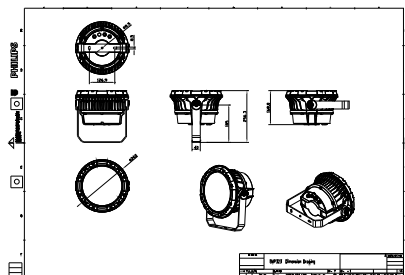
Full product code	911401740702
Order product name	BVP323 36LED RGB 220V 15 DMX
Order code	911401740702
Numerator – quantity per pack	1
Numerator – packs per outer box	2
Material no. (12NC)	911401740702
Net weight (piece)	5.199 kg



## Warnings and Safety

- For outdoor use only

## Dimensional drawing



BVP322/323/324

