



# UniFlood C

## BVP323 36LED RGBNW 220V 30 DMX

UniFlood C, 3765 lm, 80 W, Red, green, blue and white, 30°, Dynamic DMX/RDM, Safety class I, Mounting bracket adjustable

UniFlood C is a circular shaped, exterior-rated and cost-effective architectural LED floodlight that is designed for façade, landscape and outdoor flood lighting applications. The robust mechanical design and high-efficiency optical design make it ideal for illuminating multi-story exterior facades, bridges, landmarks and monuments. Available in white, monochromatic colors, RGB, RGBW and tunable white. Six different spread lenses ranging from narrow spot to wide flood and DMX512/RDM control option available to give architects and designers the freedom to explore a wide range of concepts and design with no limitations.

### Warnings and Safety

- For outdoor use only

### Product data

General Information		Operating and Electrical	
Light source replaceable	No	Correlated Color Temperature (Nom)	4000 K
Number of gear units	1 unit	Luminous Efficacy (rated) (Nom)	47 lm/W
Driver included	Yes	Color rendering index (CRI)	-
Light source engine type	LED	Light source color	Red, green, blue and white
Lighting Technology	LED	Optical cover type	Flat glass
CE mark	CE mark	Luminaire light beam spread	30°
Flammability mark	For mounting on normally flammable surfaces		
Light Technical		Input Voltage	220 to 240 V
Luminous Flux	3,765 lm	Line Frequency	50 to 60 Hz
		Inrush current	60 A
		Inrush time	0.65 ms

# UniFlood C

Power Consumption	80 W
Power Factor (Fraction)	0.9
Connection	Flying leads/wires and 2 Push-in connector 4-pole
Cable	Cable 0.5 m without plug 3-pole and 2 Cables 0.5 m with connector 4-pole
Number of products on MCB of 16 A type B 4	

## Temperature

Ambient temperature range	-40 to +50 °C
---------------------------	---------------

## Controls and Dimming

Dimmable	Yes
Driver/power unit/transformer	Power supply unit with DMX interface
Control interface	Dynamic DMX/RDM
Constant light output	No

## Mechanical and Housing

Housing Material	Aluminum die cast
Optic material	Polymethyl methacrylate
Optical cover material	Tempered glass
Fixation material	Steel
Housing Color	Dark gray
Mounting device	Mounting bracket adjustable
Optical cover shape	Flat
Optical cover finish	Clear
Overall length	315 mm

Overall width	262 mm
Overall height	169 mm
Overall diameter	262 mm
Dimensions (Height x Width x Depth)	169 x 262 x 315 mm

## Approval and Application

Ingress protection code	IP66 [Dust penetration-protected, jet-proof]
Mech. impact protection code	IK08 [5 J vandal-protected]
Protection class IEC	Safety class I

## Initial Performance (IEC Compliant)

Luminous flux tolerance	+/-10%
Power consumption tolerance	+/-10%

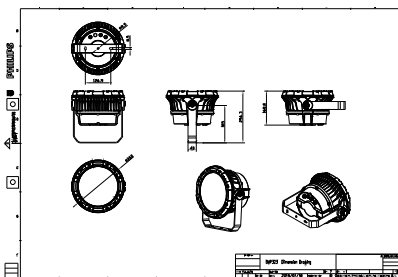
## Application Conditions

Maximum dim level	1%
-------------------	----

## Product Data

Order product name	BVP323 36LED RGBNW 220V 30 DMX
Full product name	BVP323 36LED RGBNW 220V 30 DMX
Full product code	911401740752
Order code	911401740752
Material Nr. (12NC)	911401740752
Numerator - Quantity Per Pack	1
Numerator - Packs per outer box	2

## Dimensional drawing



## UniFlood C

