



UniFlood C

BVP324 54LED 40K 220V 40

UniFlood C is a circular-shaped, exterior-rated and cost-effective architectural LED floodlight that is designed for façade, landscape and outdoor flood lighting applications. The robust mechanical design and high-efficiency optical design make it ideal for illuminating multi-storey exterior facades, bridges, landmarks and monuments. Available in white, monochromatic colours, RGB, RGBW and tunable white. Six different spread lenses, ranging from narrow spot to wide flood, and a DMX512/RDM control option available to give architects and designers the freedom to explore a wide range of concepts and design with no limitations.

Product data

| General Information | |
|-------------------------------|--|
| Lamp colour code | Neutral white |
| Light source replaceable | No |
| Number of gear units | 1 unit |
| Driver/power unit/transformer | PSU [Power supply unit] |
| Driver included | Yes |
| Optical cover/lens type | FG [Flat glass] |
| Luminaire light beam spread | 40° |
| Control interface | - |
| Connection | Flying leads/wires |
| Cable | Cable 0.5 m without plug 3-pole |
| Protection class IEC | Safety class I (I) |
| Flammability mark | F [For mounting on normally flammable surfaces] |
| CE mark | CE mark |
| Constant light output | No |
| Number of products on MCB | 3 |
| LED engine type | LED |

| Operating and Electrical | |
|--------------------------|--------------|
| Input voltage | 220 to 240 V |
| Input frequency | 50 to 60 Hz |
| Inrush current | 65 A |
| Inrush time | 0.55 ms |
| Power factor (min.) | 0.9 |

| Controls and Dimming | |
|----------------------|----|
| Dimmable | No |

| Mechanical and Housing | |
|-----------------------------|------------------------------------|
| Housing material | Aluminum die-cast |
| Optic material | Polymethyl methacrylate |
| Optical cover/lens material | Tempered glass |
| Fixation material | Steel |
| Mounting device | MBA [Mounting bracket adjustable] |
| Optical cover/lens shape | Flat |
| Optical cover/lens finish | Clear |
| Overall length | 390 mm |

UniFlood C

| | |
|------------------|-----------|
| Overall width | 332 mm |
| Overall height | 183 mm |
| Overall diameter | 332 mm |
| Colour | Dark Grey |

Approval and Application

| | |
|------------------------------|---|
| Ingress protection code | IP66 [Dust penetration-protected, jet-proof] |
| Mech. impact protection code | IK06 [1 J] |

Initial Performance (IEC Compliant)

| | |
|--------------------------------|----------|
| Initial luminous flux | 6500 lm |
| Luminous flux tolerance | +/-10% |
| Initial LED luminaire efficacy | 59 lm/W |
| Lamp colour temperature | 4000 K |
| Colour Rendering Index | 80 |
| Initial chromaticity | SDCM = 4 |
| Initial input power | 110 W |

| | |
|-----------------------------|--------|
| Power consumption tolerance | +/-10% |
|-----------------------------|--------|

Application Conditions

| | |
|---------------------------|---------------|
| Ambient temperature range | -40 to +50 °C |
|---------------------------|---------------|

Product Data

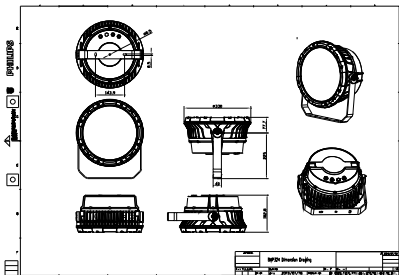
| | |
|---------------------------------|--------------------------|
| Full product code | 911401740982 |
| Order product name | BVP324 54LED 40K 220V 40 |
| Order code | 911401740982 |
| Numerator – quantity per pack | 1 |
| Numerator – packs per outer box | 1 |
| Material no. (12NC) | 911401740982 |
| Net weight (piece) | 10.399 kg |



Warnings and Safety

- For outdoor use only

Dimensional drawing



BVP322/323/324

