



# ZXP399 DMX Controls and Accessories

## ZXP399 standalone controller 12V DMX

12 DC V - - Hz - Finger-protected - CE mark

The ZXP399 DMX Controls and Wiring Accessories are to be used with our architectural and facade lighting luminaires (UniFlood C, M and G, UniStrip G4, UniEdge, UniDot G2, UniString and UniBar).;DMX Controls include a main controller, stand-alone controller, sub-controllers, DMX amplifier and DMX addressing device.;Main Controller: Industrial computer that can control up to 6,000 DMX universes.;Stand-alone Controller: Fits all medium applications with up to 700 DMX universes.;Wiring accessories include leader and jump cables with male and female IP67 connectors and end-caps.;Addressing Device: Hand-held device that can write DMX addresses to a whole run on-site within minutes.;DMX Amplifier: Compact, IP65 and low-power repeater that can amplify the DMX signal for up 100 metres.

### Product data

General Information	
CE mark	CE mark
Colour	Black
Operating and Electrical	
Input voltage	12 DC V
Input frequency	- Hz
Mechanical and Housing	
Overall length	277.6 mm

Overall width	193 mm
Overall height	66 mm
Dimensions (height x width x depth)	66 x 193 x 278 mm (2.6 x 7.6 x 10.9 in)
Approval and Application	
Ingress protection code	IP20 [ Finger-protected]
Product Data	
Full product code	911401756632
Order product name	ZXP399 standalone controller 12V DMX

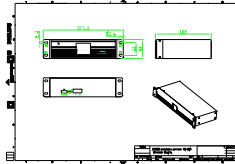
## ZXP399 DMX Controls and Accessories

Order code	911401756632
Numerator – quantity per pack	1
Numerator – packs per outer box	2
Material no. (12NC)	911401756632

Net weight (piece)	0.749 kg
--------------------	----------

IP 20

### Dimensional drawing



ZXP399

