



# Essential SmartBright LED Downlight

## DN027C LED20/WW D225

Essential SmartBright G2 LED Downlight is value for money product with high efficacy, good quality and reliability. It offers multiple configurations from 300lm to 2000lm output, to replace conventional downlight. It can be used for shopping mall, retail store, residential and office. It's an ideal product family to distribute in trade market.

### Product data

| General Information                |                |
|------------------------------------|----------------|
| Light source replaceable           | No             |
| Lighting Technology                | LED            |
| Light Technical                    |                |
| Luminous Flux                      | 2,000 lm       |
| Correlated Color Temperature (Nom) | 3000 K         |
| Color rendering index (CRI)        | 80             |
| Light source color                 | 3000/4000/6500 |
| Luminaire light beam spread        | 110°           |
| Operating and Electrical           |                |
| Input Voltage                      | 220 to 240 V   |
| Line Frequency                     | 50 or 60 Hz    |
| Input Frequency                    | 50 or 60 Hz    |
| Power Consumption                  | 23 W           |
| Power Factor (Fraction)            | 0.7            |

| Temperature                         |                         |
|-------------------------------------|-------------------------|
| Ambient temperature range           | -20 to +40 °C           |
| Mechanical and Housing              |                         |
| Housing Material                    | Plastic                 |
| Reflector material                  | Polycarbonate           |
| Housing Color                       | White                   |
| Overall length                      | 225 mm                  |
| Overall width                       | 225 mm                  |
| Overall height                      | 40 mm                   |
| Overall diameter                    | 225 mm                  |
| Dimensions (Height x Width x Depth) | 40 x 225 x 225 mm       |
| Approval and Application            |                         |
| Ingress protection code             | IP20 [Finger-protected] |
| Mech. impact protection code        | IK02 [0.2 J standard]   |
| Protection class IEC                | Safety class II         |

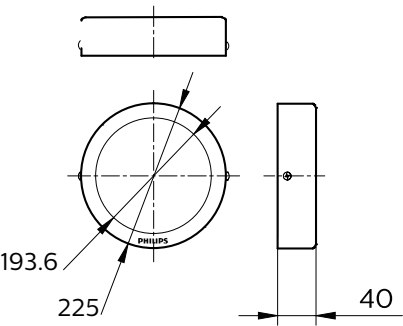
| Product Data       |                      |
|--------------------|----------------------|
| Order product name | DN027C LED20/WW D225 |

# Essential SmartBright LED Downlight

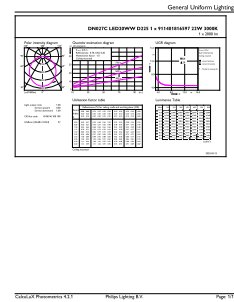
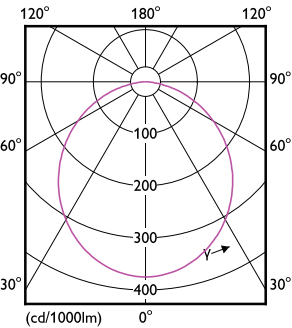
|                               |                      |
|-------------------------------|----------------------|
| Full product name             | DN027C LED20/WW D225 |
| Full product code             | 871016330931699      |
| Order code                    | 911401816597         |
| Material Nr. (12NC)           | 911401816597         |
| Numerator - Quantity Per Pack | 1                    |

|                                 |               |
|---------------------------------|---------------|
| EAN/UPC - Product/Case          | 8710163309316 |
| Numerator - Packs per outer box | 24            |
| EAN/UPC - Case                  | 8710163310190 |

## Dimensional drawing



## Photometric data



Light Distribution Diagram - DN027C LED20/WW D225

General uniform lighting - DN027C LED20/WW D225

