



# Essential SmartBright LED Downlight

## DN027C LED20/NW D225

Essential SmartBright G2 LED Downlight is value for money product with high efficacy, good quality and reliability. It offers multiple configurations from 300lm to 2000lm output, to replace conventional downlight. It can be used for shopping mall, retail store, residential and office. It's an ideal product family to distribute in trade market.

### Product data

General Information	
Light source replaceable	No
Lighting Technology	LED
Light Technical	
Luminous Flux	2,000 lm
Correlated Color Temperature (Nom)	4000 K
Color rendering index (CRI)	80
Light source color	3000/4000/6500
Luminaire light beam spread	110°
Operating and Electrical	
Input Voltage	220 to 240 V
Line Frequency	50 or 60 Hz
Input Frequency	50 or 60 Hz
Power Consumption	23 W
Power Factor (Fraction)	0.7

Temperature	
Ambient temperature range	-20 to +40 °C
Mechanical and Housing	
Housing Material	Plastic
Reflector material	Polycarbonate
Housing Color	White
Overall length	225 mm
Overall width	175 mm
Overall height	40 mm
Overall diameter	225 mm
Dimensions (Height x Width x Depth)	40 x 175 x 225 mm
Approval and Application	
Ingress protection code	IP20 [Finger-protected]
Mech. impact protection code	IK02 [0.2 J standard]
Protection class IEC	Safety class II

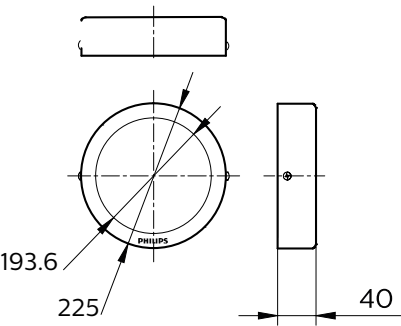
Product Data	
Order product name	DN027C LED20/NW D225

# Essential SmartBright LED Downlight

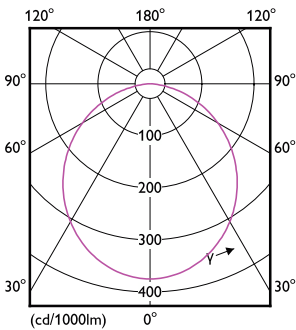
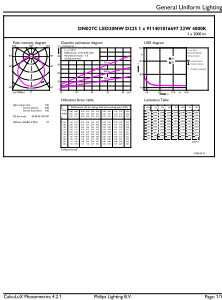
Full product name	DN027C LED20/NW D225
Full product code	871016330932399
Order code	911401816697
Material Nr. (12NC)	911401816697
Numerator - Quantity Per Pack	1

EAN/UPC - Product/Case	8710163309323
Numerator - Packs per outer box	24
EAN/UPC - Case	8710163310206

## Dimensional drawing



## Photometric data



General uniform lighting - DN027C LED20/NW D225

Light Distribution Diagram - DN027C LED20/NW D225

