

Greenperform Waterproof G2 - WT188C

WT188C LED60 NW L1500 PSU TW

Greenperform Waterproof G2 - WT188C, 50 W, 5400 lm, 4000 K, 120°

Greenperform Waterproof G2 luminaire and its components are designed for both indoor and semi-outdoor application (anti-UV PC material housing and diffuser, stainless steel installation accessory). We design for friendly optical, energy saving, reliable quality, and easy wiring. Beyond that, GreenParking wireless motion detective system is ready to provide the maximum energy saving and new lighting experience to you.

Product data

General Information	
Light source replaceable	No
Number of gear units	1 unit
Driver included	Yes
Light source engine type	LED
CE mark	CE mark
Warranty period	3 years
Flammability mark	-
ENEC mark	-
Glow-wire test	Temperature 750 °C, duration 5 s
EU RoHS compliant	Yes

Light Technical	
Luminous Flux	5,400 lm
Correlated Color Temperature (Nom)	4000 K
Luminous Efficacy (rated) (Nom)	108 lm/W
Color rendering index (CRI)	>80
Beam angle of light source	- degree(s)
Light source color	Neutral white
Optic type	Symmetrical
Optical cover type	Polycarbonate bowl/cover foggy
Luminaire light beam spread	120°

Greenperform Waterproof G2 - WT188C

Operating and Electrical	
Input Voltage	220 to 240 V
Line Frequency	50 to 60 Hz
Inrush current	19 A
Inrush time	0.28 ms
Power Consumption	50 W
Power Factor (Fraction)	0.95
Connection	Floating connector
Number of products on MCB of 16 A type B	24

Temperature	
Ambient temperature range	-30 to +45 °C

Controls and Dimming	
Dimmable	No
Driver/power unit/transformer	Power supply unit (On/Off)
Control interface	-
Constant light output	No

Mechanical and Housing	
Housing Material	Polycarbonate
Reflector material	Steel
Optic material	Polycarbonate
Optical cover material	Polycarbonate
Fixation material	Stainless steel
Housing Color	Gray and white
Optical cover finish	Opal
Overall length	1,446 mm
Overall width	84 mm
Overall height	83 mm

Dimensions (Height x Width x Depth)	83 x 84 x 1446 mm
-------------------------------------	-------------------

Approval and Application	
Ingress protection code	IP65 [Dust penetration-protected, jet-proof]
Mech. impact protection code	IK08 [5 J vandal-protected]
Protection class IEC	Safety class I

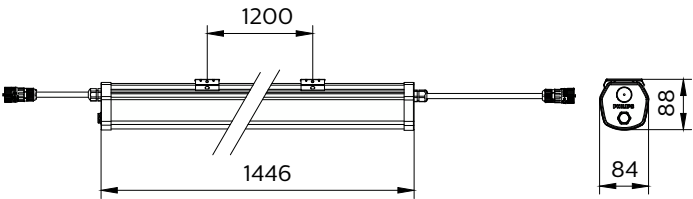
Initial Performance (IEC Compliant)	
Luminous flux tolerance	+/-10%
Initial chromaticity	SDCM<5
Power consumption tolerance	+/-10%

Over Time Performance (IEC Compliant)	
Median useful life L70B50	50,000 h
Median useful life L80B50	45,000 h
Median useful life L90B50	35,000 h

Application Conditions	
Maximum dim level	Not applicable

Product Data	
Order product name	WT188C LED60 NW L1500 PSU TW
Full product name	WT188C LED60 NW L1500 PSU TW
Full product code	911401831497
Order code	911401831497
Material Nr. (12NC)	911401831497
Numerator - Quantity Per Pack	1
Numerator - Packs per outer box	1

Dimensional drawing



Greenperform Waterproof G2 - WT188C

