



UNistrip LP G2

BCP270 G2 48xLED/3000 24V L1200 A DMX RU

UNistrip LP Gen2 is an evolution in both optical and system design. It offers Mono and RGB DMX versions with precision optical performance to enable dynamic effects with affordable pricing.

Product data

General Information	
Light source color	Warm white
Number of gear units	1 unit
Driver/power unit/transformer	Electronic transformer
Driver included	No
Optical cover/lens type	Polycarbonate linear
Control interface	Dynamix DMX
Connection	Flying leads/wires
Cable	Cable 1.0 m without plug
Protection class IEC	Safety class III
Flammability mark	For mounting on normally flammable surfaces
CE mark	-
ENEC mark	-
Warranty period	3 years
Constant light output	No
RoHS mark	RoHS mark
Light source engine type	LED
Controls and Dimming	
Dimmable	Yes
Mechanical and Housing	
Housing Material	Aluminum extruded

Optic material	Polycarbonate
Optical cover/lens material	Polycarbonate
Fixation material	Aluminum
Mounting device	Mounting bracket adjustable
Optical cover/lens shape	Flat
Optical cover/lens finish	Clear
Overall length	1216 mm
Overall width	50 mm
Overall height	61 mm

Approval and Application

Mech. impact protection code	IK03 [0.3 J]
------------------------------	---------------

Initial Performance (IEC Compliant)

Initial luminous flux (system flux)	1188 lm
Initial LED luminaire efficacy	97 lm/W
Init. Corr. Color Temperature	3000 K
Init. Color Rendering Index	70
Initial input power	12.2 W
Power consumption tolerance	+/-10%

Application Conditions

Ambient temperature range	-40 to +50 °C
---------------------------	---------------

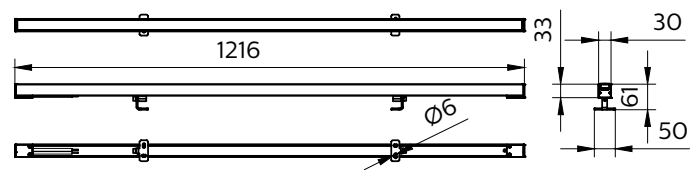
UNIstrip LP G2

Maximum dim level	0% (digital)
Product Data	
Full product code	911401856298
Order product name	BCP270 G2 48xLED/3000 24V L1200 A DMX RU
Order code	911401856298
Numerator - Quantity Per Pack	1

Numerator - Packs per outer box	8
Material Nr. (12NC)	911401856298
Net Weight (Piece)	1.049 kg



Dimensional drawing



UNIstrip LP G2 BCP270

