



# Essential SmartBright G2 LED Floodlight

## BVP135 LED40/NW 50W 220-240V WB

Essential SmartBright G2 LED floodlight comes with a compact and sturdy design. It is light weight with die-cast aluminium housing and corrosion-proof powder coating, suitable for general outdoor application. High efficiency designed with latest LED technology, achieves substantial energy savings comparing to conventional floodlights.

### Product data

General Information	
Lamp colour code	840 neutral white
Light source replaceable	No
Driver included	Yes
Optical cover/lens type	Polycarbonate bowl/cover flat
Luminaire light beam spread	100°
Control interface	-
Connection	Flying leads/wires
Protection class IEC	Safety class I (I)
Flammability mark	NO [-]
CE mark	CE mark
LED engine type	LED
Light Technical	
Standard tilt angle post-top	-
Standard tilt angle side entry	-
Operating and Electrical	
Input voltage	220 to 240 V
Input frequency	50 to 60 Hz

Power factor (min.)	0.9
Controls and Dimming	
Dimmable	No
Mechanical and Housing	
Housing material	Aluminum die-cast
Optical cover/lens material	Polycarbonate
Mounting device	MBA [ Mounting bracket adjustable]
Optical cover/lens finish	Textured
Overall length	240 mm
Overall width	201 mm
Overall height	38 mm
Approval and Application	
Ingress protection code	IP65 [ Dust penetration-protected, jet-proof]
Mech. impact protection code	IK06 [ 1 J]
Initial Performance (IEC Compliant)	
Initial luminous flux	4000 lm

## Essential SmartBright G2 LED Floodlight

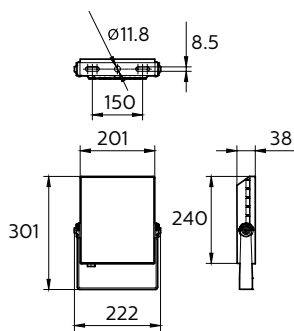
Luminous flux tolerance	+/-10%
Initial LED luminaire efficacy	80.00 lm/W
Lamp colour temperature	4000 K
Colour Rendering Index	>80
Initial chromaticity	SDCM <7
Initial input power	50 W
Power consumption tolerance	+/-10%

Order product name	BVP135 LED40/NW 50W 220-240V WB
EAN/UPC – product	8710163314402
Order code	911401859798
Numerator – quantity per pack	1
Numerator – packs per outer box	12
Material no. (12NC)	911401859798
Net weight (piece)	1.110 kg

### Product Data

Full product code	911401859798
-------------------	--------------

### Dimensional drawing



BVP131/132/133/135 LED WB

