



Coreline tempo medium

BVP125 LED80-4S/740 S

Coreline tempo medium - LED module 8000 lm - 740 neutral white - Symmetrical

CoreLine tempo medium is a highly efficient range of floodlights designed for 1:1 retrofit replacement of conventional technology, while retaining the same electrical installation and poles. A limited range of options makes it easy to find the best lux-for-lux replacement. The easy-to-install CoreLine tempo medium offers lumen packages for many different application areas as well as a choice of high-performance asymmetrical and symmetrical optics. It includes a U-shaped universal mounting bracket and external quick 3-poles IP68 connector.

Product data

General Information		CE mark	CE mark
Lamp family code	LED80 [LED module 8000 lm]	ENEC mark	ENEC mark
Light source colour	740 neutral white	Warranty period	5 years
Light source replaceable	No	Outdoor optic type	Symmetrical
Number of gear units	1 unit	Remarks	*-Per Lighting Europe guidance paper "Evaluating performance of LED based luminaires - January 2018": statistically there is no relevant difference in lumen maintenance between B50 and for example B10. Therefore the median useful life (B50) value also represents the B10 value. * At extreme ambient temperatures the luminaire might automatically dim down to protect components
Driver/power unit/transformer	PSU [Power supply unit]		
Driver included	Yes		
Optical cover/lens type	FG [Flat glass]		
Luminaire light beam spread	69° x 25°		
Connection	CE [External connector]		
Cable	Cable 450 mm with connector 3-pole		
Protection class IEC	Safety class I (I)		
Flammability mark	F [For mounting on normally flammable surfaces]		

Coreline tempo medium

Constant light output	No
Number of products on MCB	8
RoHS mark	RoHS mark
LED engine type	LED
Product Family Code	BVP125 [Coreline tempo medium]

Light Technical

Upward light output ratio	0
Standard tilt angle post-top	0°
Standard tilt angle side entry	0°

Operating and Electrical

Input voltage	220 to 240 V
Input frequency	50 to 60 Hz
Inrush current	53 A
Inrush time	0.3 ms
Power factor (min.)	0.94

Controls and Dimming

Dimmable	No
----------	----

Mechanical and Housing

Housing material	Aluminum
Reflector material	-
Optic material	Polycarbonate
Optical cover/lens material	Glass
Fixation material	Aluminum
Mounting device	MBW [Wall-mounting bracket]
Optical cover/lens shape	Flat
Optical cover/lens finish	Clear
Overall length	340.5 mm
Overall width	265 mm
Overall height	67.4 mm
Effective projected area	0.09 m ²
Colour	Gray

Approval and Application

Ingress protection code	IP66 [Dust penetration-protected, jet-proof]
Mech. impact protection code	IK08 [5 J vandal-protected]

Initial Performance (IEC Compliant)

Initial luminous flux	8000 lm
Luminous flux tolerance	+/-7%
Initial LED luminaire efficacy	133 lm/W
Init. Corr. colour temperature	4000 K
Init. colour rendering index	>70
Initial chromaticity	(0.382, 0.379) SDCM <3
Initial input power	63 W
Power consumption tolerance	+/-11%

Over Time Performance (IEC Compliant)

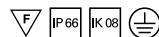
Control gear failure rate at median useful life 75000 h	7.5 %
Lumen maintenance at median useful life* 75000 h	L80

Application Conditions

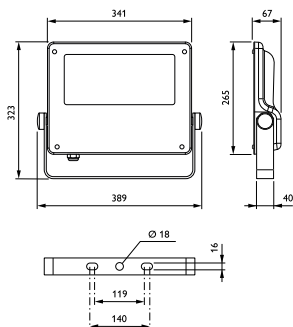
Ambient temperature range	-40 to +50 °C
Performance ambient temperature Tq	25 °C

Product Data

Full product code	871869945590300
Order product name	BVP125 LED80-4S/740 S
EAN/UPC – product	8718699455903
Order code	45590300
Numerator – quantity per pack	1
Numerator – packs per outer box	1
Material no. (12NC)	912300024004
Net weight (piece)	4.750 kg



Dimensional drawing



CoreLine Tempo BVP110/120/125/130/140

Coreline tempo medium

