



OptiVision LED gen2

BVP515 1290/740 380-400 BV AWB D9 T20 LO

OptiVision LED gen2 - LED High Brightness - 740 neutral white - 380/400 V - Basic version - Asymmetrical wide beam - Dimming via external communication DALI - Internal louver - Useful life L80B10 of 50000 h

The Philips OptiVision LED gen2 floodlighting system provides a complete lighting solution for the simplest through to the most complex area and recreational sports lighting applications. The high-efficiency floodlights come with three or two LED light modules, which function with an external driver box – separate for use at a distance from the floodlight (BV), or pre-fixed onto the mounting bracket of the floodlight (HGB) for ease of installation and lower initial cost. They meet the highest performance standards, provide outstanding light quality, and ensure safety and visual comfort. OptiVision LED gen2 offers new possibilities to reduce energy consumption and increase flexibility (instant start, programmable lighting levels) when used in conjunction with Philips’ advanced system controls and sensors. The floodlights are also compatible with other external control systems via DALI protocol.

Product data

General Information	
Lamp family code	LED-HB [LED High Brightness]
Light source color	740 neutral white
Light source replaceable	Yes
Number of gear units	1 unit
Driver/power unit/transformer	Power supply unit with DALI interface external
Driver included	Yes
Optical cover/lens type	Polycarbonate bowl/cover
Luminaire light beam spread	18° - 7° x 119°

Control interface	DALI
Light regulation	Dimming via external communication DALI
Connection	Push-in connector and pull relief
Cable	-
Protection class IEC	Safety class I
Flammability mark	-
Type description	Useful life L80B10 of 50000 h
CE mark	CE mark
ENEC mark	ENEC mark

OptiVision LED gen2

Warranty period	5 years
Glare shielding accessories	Internal louver
Optic type outdoor	Asymmetrical wide beam
Remarks	*-Per Lighting Europe guidance paper "Evaluating performance of LED based luminaires - January 2018": statistically there is no relevant difference in lumen maintenance between B50 and for example B10. Therefore the median useful life (B50) value also represents the B10 value. * At extreme ambient temperatures the luminaire might automatically dim down to protect components
Constant light output	No
Number of products on MCB of 16 A type B	-
RoHS mark	RoHS mark
Light source engine type	LED
Serviceability class	Class A, luminaire is equipped with serviceable parts (when applicable): LED board, driver, control units, surge protection device, optics, front cover and mechanical parts
Product family code	BVP515 [OptiVision LED gen2]

Light Technical

Upward light output ratio	0
Standard tilt angle posttop	-
Standard tilt angle side entry	-

Operating and Electrical

Input Voltage	380/400 V
Input Frequency	50 Hz
Inrush current	30 A
Inrush time	0.016 ms
Power Factor (Min)	0.95

Controls and Dimming

Dimmable	Yes
----------	-----

Mechanical and Housing

Housing configuration	Basic version
Housing Material	Aluminum
Reflector material	Polycarbonate
Optic material	Polycarbonate
Optical cover/lens material	Polycarbonate
Fixation material	Aluminum
Mounting device	Mounting bracket adjustable
Optical cover/lens shape	Flat
Optical cover/lens finish	Clear

Overall length	750 mm
Overall width	616 mm
Overall height	600 mm
Effective projected area	0.34 m ²
Color	Aluminum

Approval and Application

Ingress protection code	IP66 [Dust penetration-protected, jet-proof]
Mech. impact protection code	IK08 [5 J vandal-protected]
Surge Protection (Common/Differential)	Luminaire surge protection level until 6 kV differential mode and 10 kV common mode

Initial Performance (IEC Compliant)

Initial luminous flux (system flux)	102000 lm
Luminous flux tolerance	+/-7%
Initial LED luminaire efficacy	104 lm/W
Init. Corr. Color Temperature	4000 K
Init. Color Rendering Index	≥70
Initial chromaticity	(0.367, 0.358) SDCM <5
Initial input power	981 W
Power consumption tolerance	+/-10%

Over Time Performance (IEC Compliant)

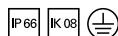
Control gear failure rate at median useful life 50000 h	5 %
Lumen maintenance at median useful life* 50000 h	L80

Application Conditions

Ambient temperature range	-40 to +50 °C
Performance ambient temperature Tq	25 °C
Maximum dim level	10%

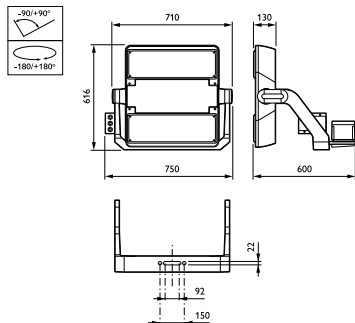
Product Data

Full product code	871869948180300
Order product name	BVP515 1290/740 380-400 BV AWB D9 T20 LO
EAN/UPC - Product	8718699481803
Order code	912300024107
Numerator - Quantity Per Pack	1
Numerator - Packs per outer box	1
Material Nr. (12NC)	912300024107
Net Weight (Piece)	34.200 kg



OptiVision LED gen2

Dimensional drawing



OptiVision LED BVP500/515/520/525

