



iW Reach Compact Powercore

iW Reach Compact Powercore, 5° Native (no spread lens), UL/CE

iW Reach Compact Powercore, 5° Native (no spread lens), UL/CE

iW Reach Compact Powercore combines all the benefits of LED-based lighting and control in a compact fixture specifically designed for large-scale installations, such as skyscrapers, casinos, bridges, piers, public monuments, and themed attractions. iW Reach Compact Powercore combines channels of warm-, neutral-, and cool-white LED sources to offer high-quality variable white light in color temperatures ranging from 2700-6500 K. iW Reach Compact Powercore delivers intense, energy-efficient output at a reasonable price, opening up new possibilities for exterior illumination.

Product data

General Information		Warranty period	
Light source colour	Cool white and warm white	EU RoHS compliant	Yes
Light source replaceable	No	WEEE mark	WEEE mark
Driver included	Yes	Angle	5°
Optical cover/lens type	CLFT [Clear flat]	Operating and Electrical	
Luminaire light beam spread	5°	Input Voltage	100 to 277 V
Protection class IEC	Safety class I (I)	Input frequency	50 to 60 Hz
Flammability mark	F [For mounting on normally flammable surfaces]	Control signal voltage	1-10 V DC
CE mark	CE mark	Power factor (nom.)	0.99
UL mark	UL and cUL mark		

iW Reach Compact Powercore

Controls and Dimming	
Dimmable	Yes

Mechanical and Housing	
Housing material	Aluminum die-cast
Optic material	Glass
Optical cover/lens material	Tempered glass
Optical cover/lens shape	Flat
Optical cover/lens finish	Clear
Colour	Aluminum

Approval and Application	
Ingress protection code	IP66 [Dust penetration-protected, jet-proof]
Mech. impact protection code	IK07 [2 J reinforced]

Initial Performance (IEC Compliant)	
Initial luminous flux (system flux)	7425 lm
Luminous flux tolerance	+/-10%
Initial LED luminaire efficacy	62.1 lm/W
Init. Colour rendering index	79
Initial input power	125 W
Power consumption tolerance	+/-10%

Over Time Performance (IEC Compliant)	
Lumen Maintenance 70% at 25 °C Calculated	100000

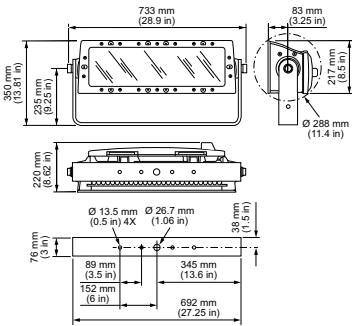
Lumen Maintenance 70% at 50 °C Calculated	100000
Lumen Maintenance 80% at 25 °C Calculated	100000
Lumen Maintenance 80% at 50 °C Calculated	100000
Lumen Maintenance 90% at 25 °C Reported	42300
Lumen Maintenance 90% at 50 °C Reported	42300

Application Conditions	
Ambient temperature range	-40 to +50 °C

Product Data	
Full product code	871829139013800
Order product name	DCP401 2700-6500 CO 100-277V UL CE
EAN/UPC – product	8718291390138
Order code	523-000096-02
SAP numerator – quantity per pack	1
Numerator – packs per outer box	1
SAP material	912400133461
SAP net weight (piece)	23.400 kg
Commercial Code	523-000096-02
Catalogue number description	iW Reach Compact Powercore, 5° Native (no spread lens), UL/CE



Dimensional drawing



Reach Compact

iW Reach Compact Powercore

