



Color Reach Compact Powercore

ColorReach Compact Powercore, RGB, 5° Native (no spread lens), UL/CE

ColorReach Compact Powercore, RGB, 5° Native (no spread lens), UL/CE

ColorReach Compact Powercore combines all the benefits of LED-based lighting and control in a compact fixture specifically designed for large-scale installations, such as commercial skyscrapers, casinos, bridges, piers, public monuments, and themed attractions. With levels of light output and projection never before achieved in a compact LED lighting fixture, ColorReach Compact Powercore delivers intense, energy-efficient output at a reasonable price, opening up new possibilities for exterior illumination. Custom configurations with custom channels of white or coloured LED sources are also available to support special applications.

Product data

General Information			
Number of light sources	52 [52 pcs]	Flammability mark	F [For mounting on normally flammable surfaces]
Lamp family code	LED-HB [LED High Brightness]	CE mark	CE mark
Lamp colour code	RGB	UL mark	UL and cUL mark
Light source replaceable	No	Warranty period	5 years
Driver/power unit/transformer	PSR [Power supply unit regulating]	EU RoHS compliant	Yes
Driver included	Yes	WEEE mark	WEEE mark
Optical cover/lens type	FG [Flat glass]	Life to 70% init. flux at 25 °C	100000 h
Luminaire light beam spread	5°	Operating and Electrical	
Protection class IEC	Safety class I (I)	Input Voltage	100 to 277 V

Color Reach Compact Powercore

Input frequency	50 to 60 Hz
Control signal voltage	1-10 V DC

Controls and Dimming

Dimmable	Yes
----------	-----

Mechanical and Housing

Housing material	Aluminum die-cast
Optic material	Glass
Optical cover/lens material	Tempered glass
Optical cover/lens shape	Flat
Optical cover/lens finish	Clear
Colour	Aluminium

Approval and Application

Ingress protection code	IP66 [Dust penetration-protected, jet-proof]
Mech. impact protection code	IK07 [2 J reinforced]

Initial Performance (IEC Compliant)

Initial luminous flux (system flux)	4658 lm
Colour Rendering Index	82
Initial input power	130 W
Power consumption tolerance	+/-10%

Over Time Performance (IEC Compliant)

Lumen Maintenance 70% at 25 °C	100000
Calculated	
Lumen Maintenance 70% at 50 °C	100000
Calculated	

Application Conditions

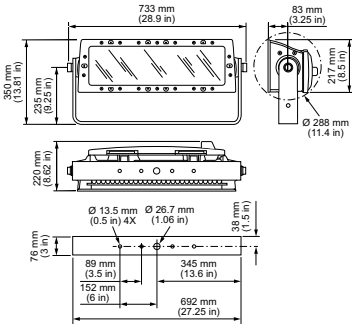
Ambient temperature range	-40 to +50 °C
---------------------------	---------------

Product Data

Full product code	871829139012100
Order product name	DCP403 RGB CO 100-277V UL CE
EAN/UPC – product	8718291390121
Order code	123-000154-02
SAP numerator – quantity per pack	1
Numerator – packs per outer box	1
SAP material	912400133610
SAP net weight (piece)	23.400 kg
Commercial Code	123-000154-02
Commercial Code	ColorReach Compact Powercore, RGB, 5° Native (no spread lens), UL/CE



Dimensional drawing



Reach Compact

Color Reach Compact Powercore

