



# HID ignitors for series systems

## SN 56 220-240V 50/60Hz

HID ignitors for series systems

### Product data

General Information	
Application Code	56
Lamp Type	SON/MHN
Number of Lamps	1 piece/unit
Operating and Electrical	
Input Voltage	220 to 240 V
Input Frequency	50 to 60 Hz
Igniton Type	Semi-Parallel
Number of Ignition Pulses	2
Ignition Voltage (Max)	5.00 kV
Response Voltage	198 V
Mains Voltage Performance (AC)	-8% - +6%
Mains Voltage Safety (AC)	-10% - +10%
Power Losses (Nom)	1.0 W
Wiring	
Cable Capacity Wires Device to Lamp (Nom)	10 nF
Wire Striplength	6.0 mm
Ballast Contact Wire Cross Section	0.70-2.50 mm <sup>2</sup>
Connector Type	Screw

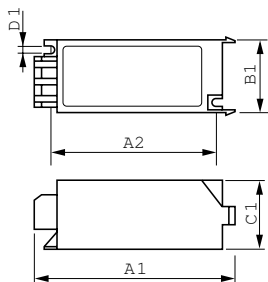
System characteristics	
Rated Ballast-Lamp Power	1800 W
Temperature	
T-Ambient (Max)	55 °C
T-Storage (Max)	80 °C
T-Storage (Min)	-25 °C
T-Case Maximum (Max)	60 °C
Mechanical and Housing	
Housing	SNI-115
Approval and Application	
Approval Marks	CE marking ENEC certificate
Product Data	
Full product code	871150091560330
Order product name	SN 56 220-240V 50/60Hz
EAN/UPC - Product	8711500915603
Order code	913619669966
Numerator - Quantity Per Pack	1
Numerator - Packs per outer box	20
Material Nr. (12NC)	913619669966

## HID ignitors for series systems

Net Weight (Piece)

0.090 kg

### Dimensional drawing



Product	D1	C1	A1	A2	B1
SN 56 220-240V 50/60Hz	4.3 mm	38.0 mm	114.5 mm	95.0 mm	41.0 mm

SN 56 220-240V 50/60Hz

