

# HID-HeavyDuty BSX for SOX

## BSX 90 L32 240V 50Hz HD1-118

Encapsulated electromagnetic copper/iron ballasts for SOX and SOX-E lamps

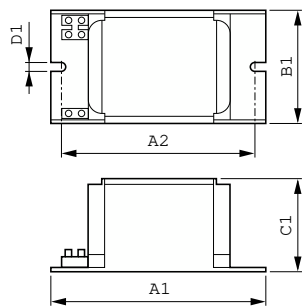
### Product data

<b>Operating and Electrical</b>	
Input Voltage	240 V
Line Frequency	50 Hz
Input Frequency	50 Hz
<b>Wiring</b>	
Connector Type	Screw
<b>Approval and Application</b>	
Approval Marks	CE marking ENEC certificate
<b>Product Data</b>	
Order product name	BSX 90 L32 240V 50Hz HD1-118

Full product name	BSX 90 L32 240V 50Hz HD1-118
Full product code	871150091534431
Order code	913650080526
Material Nr. (12NC)	913650080526
Numerator - Quantity Per Pack	1
EAN/UPC - Product/Case	8711500915344
Numerator - Packs per outer box	6
EAN/UPC - Case	8711500061874

# HID-HeavyDuty BSX for SOX

## Dimensional drawing



Product	D1	C1	A1	A2	B1
BSX 90 L32 240V 50Hz HD1-118	6.2 mm	53.0 mm	118.0 mm	103.0 mm	65.0 mm

