



HID ignitors for series systems

SX 70 220-240V 50/60HZ

HID ignitors for series systems

Product data

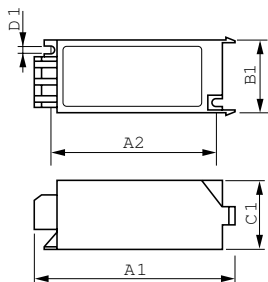
General Information	
Application code	70
Lamp type	SOX/SOX-E
Number of lamps	1 piece/unit
Operating and Electrical	
Input voltage	220 to 240 V
Input frequency	50 to 60 Hz
Ignition type	Parallel
Ignition voltage (max.)	1.2 kV
Response voltage	198 V
Mains voltage performance (AC)	-8%+6%
Mains voltage safety (AC)	-10%+10%
Power losses (nom.)	1.0 W
Wiring	
Cable capacity wires device to lamp (nom.)	5 nF
Wire strip length	6.0 mm
Ballast contact wire cross section	0.70-2.50 mm ²
Connector type	Screw

System characteristics	
Rated ballast-lamp power	90 W
Temperature	
T ambient (max.)	75 °C
T ambient (min.)	-20 °C
T storage (max.)	80 °C
T storage (min.)	-25 °C
T-Case maximum (max.)	80 °C
Mechanical and Housing	
Housing	SNI-115
Approval and Application	
Approval marks	CE marking ENEC certificate
Product Data	
Full product code	871150091549830
Order product name	SX 70 220-240V 50/60Hz
EAN/UPC – product	8711500915498
Order code	91549830
Local Code	SX70
Numerator – quantity per pack	1

HID ignitors for series systems

Numerator – packs per outer box	20
Material no. (12NC)	913654039066
Net weight (piece)	0.086 kg

Dimensional drawing



Product	D1	C1	A1	A2	B1
SX 70 220-240V 50/60Hz	4.3 mm	38.0 mm	114.5 mm	95.0 mm	41.0 mm

SX 70 220-240V 50/60Hz

