



# HID ignitors for series systems

## SX 72 220-240V 50/60Hz

HID ignitors for series systems

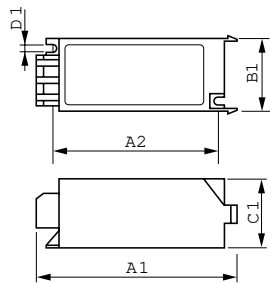
### Product data

Operating and Electrical	
Input Voltage	220 to 240 V
Line Frequency	50 to 60 Hz
Input Frequency	50 to 60 Hz
Wiring	
Connector Type	Screw
Temperature	
Ambient temperature range	-20 °C to 75 °C
T-Case Maximum (Max)	80 °C
Mechanical and Housing	
Housing	SNI-115

Approval and Application	
Approval Marks	CE marking ENEC certificate
Product Data	
Order product name	SX 72 220-240V 50/60Hz
Full product name	SX 72 220-240V 50/60Hz
Full product code	871150091561030
Order code	913654059066
Material Nr. (12NC)	913654059066
Numerator - Quantity Per Pack	1
EAN/UPC - Product/Case	8711500915610
Numerator - Packs per outer box	20
EAN/UPC - Case	8711500914361

# HID ignitors for series systems

## Dimensional drawing



Product	D1	C1	A1	A2	B1
SX 72 220-240V 50/60Hz	4.3 mm	38.0 mm	114.5 mm	95.0 mm	41.0 mm

