



HID-HighPower for SON/MH/HPL/HPI

BHL 1000 L78-A2 230/240V 50Hz HP-207

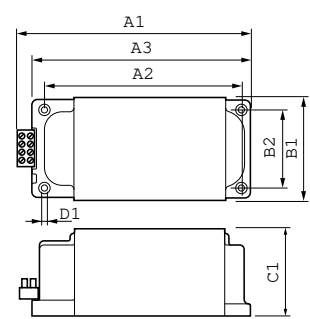
Encapsulated ballasts for use with SON (T) (Plus), HPL, HPI and MH lamps with rated wattages of 1000 W and above

Product data

| | | | |
|---------------------------------|--------------------------------------|---------------------------------|--------------------------------------|
| Operating and Electrical | | Full product name | BHL 1000 L78-A2 230/240V 50Hz HP-207 |
| Input Voltage | 230 V (default) or 240 V | Full product code | 871150006237600 |
| Line Frequency | 50 Hz | Order code | 913700217303 |
| Input Frequency | 50 Hz | Material Nr. (12NC) | 913700217303 |
| Wiring | | Numerator - Quantity Per Pack | 1 |
| Connector Type | Screw | EAN/UPC - Product/Case | 8711500996657 |
| Approval and Application | | Numerator - Packs per outer box | 1 |
| Approval Marks | CE marking ENEC certificate | EAN/UPC - Case | 8711500062376 |
| Product Data | | | |
| Order product name | BHL 1000 L78-A2 230/240V 50Hz HP-207 | | |

HID-HighPower for SON/MH/HPL/HPI

Dimensional drawing



| Product | D1 | C1 | A1 | A2 | A3 | B1 | B2 |
|-----------------|-----|-------|-------|-------|-------|-------|------|
| BHL 1000 L78-A2 | 6.5 | 102.0 | 207.0 | 172.0 | 196.0 | 117.0 | 88.0 |
| 230/240V 50Hz | mm | mm | mm | mm | mm | mm | mm |
| HP-207 | | | | | | | |

