

HID-HeavyDuty BSN semi-parallel for SON/CDO/MH/HPI

BSN 70 L34-A2-TS 240V 50Hz HD1-118

Encapsulated electromagnetic copper/iron ballasts for use with an external semi-parallel ignitor for CDM, CDO, MH, HPI (Plus) and SON lamps

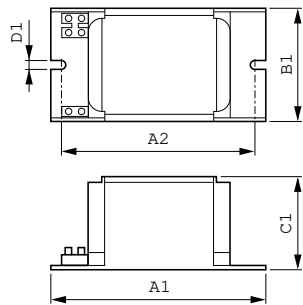
Product data

Operating and Electrical	
Input Voltage	240 V
Line Frequency	50 Hz
Input Frequency	50 Hz
Wiring	
Connector Type	Screw
Approval and Application	
Approval Marks	CE marking ENEC certificate
Product Data	
Order product name	BSN 70 L34-A2-TS 240V 50Hz HD1-118

Full product name	BSN 70 L34-A2-TS 240V 50Hz HD1-118
Full product code	871150005970331
Order code	913700226626
Material Nr. (12NC)	913700226626
Numerator - Quantity Per Pack	1
EAN/UPC - Product/Case	8711500059703
Numerator - Packs per outer box	6
EAN/UPC - Case	8711500062161

HID-HeavyDuty BSN semi-parallel for SON/CDO/MH/HPI

Dimensional drawing



Product	D1	C1	A1	A2	B1
BSN 70 L34-A2-TS 240V 50Hz	6.2 mm	53.0 mm	118.0 mm	103.0 mm	65.0 mm
HD1-118					

