

# HID-HeavyDuty BSN semi-parallel for SON/CDO/MH/HPI

## BSN 400 L33-TS 230V 50Hz HD3-166

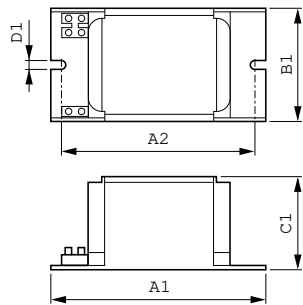
Encapsulated electromagnetic copper/iron ballasts for use with an external semi-parallel ignitor for CDM, CDO, MH, HPI (Plus) and SON lamps (no ignitor needed for SON-I lamps)

### Product data

|                                 |                                     |  |  |                                  |  |
|---------------------------------|-------------------------------------|--|--|----------------------------------|--|
| <b>Operating and Electrical</b> |                                     | <b>Full product name</b>               |  | BSN 400 L33-TS 230V 50Hz HD3-166 |  |
| Input Voltage                   | 230 V                               | <b>Full product code</b>               |  | 871150005976530                  |  |
| Line Frequency                  | 50 Hz                               | <b>Order code</b>                      |  | 05976530                         |  |
| Input Frequency                 | 50 Hz                               | <b>Material Nr. (12NC)</b>             |  | 913700226926                     |  |
|                                 |                                     | <b>Numerator - Quantity Per Pack</b>   |  | 1                                |  |
|                                 |                                     | <b>EAN/UPC - Product/Case</b>          |  | 8711500059765                    |  |
|                                 |                                     | <b>Numerator - Packs per outer box</b> |  | 4                                |  |
|                                 |                                     | <b>EAN/UPC - Case</b>                  |  | 8711500059772                    |  |
|                                 |                                     |  |  |                                  |  |
| <b>Approval and Application</b> |                                     |  |  |                                  |  |
| Approval Marks                  | CE marking ENEC certificate         |  |  |                                  |  |
|                                 |                                     |  |  |                                  |  |
| <b>Product Data</b>             |                                     |  |  |                                  |  |
| Order product name              | BSN 400 L33-A2-TS 230V 50Hz HD3-166 |  |  |                                  |  |

# HID-HeavyDuty BSN semi-parallel for SON/CDO/MH/HPI

## Dimensional drawing



| Product                     | D1     | C1      | A1       | A2       | B1       |
|-----------------------------|--------|---------|----------|----------|----------|
| BSN 400 L33-A2-TS 230V 50Hz | 6.2 mm | 84.0 mm | 166.0 mm | 147.5 mm | 102.0 mm |
| HD3-166                     |        |         |          |          |          |

