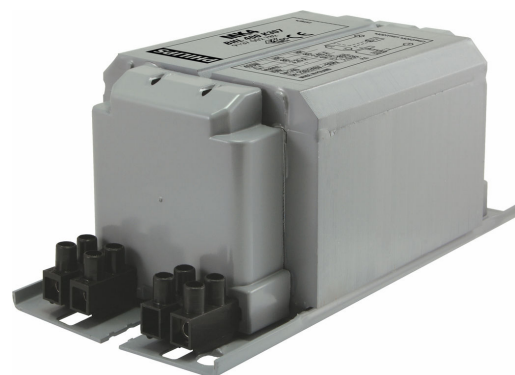


PHILIPS

Lighting



HID-Basic BHL MK4 for HPL/HPI

BHL 400 K307-A2 230/240V 50Hz BC2-160

Impregnated electromagnetic copper/iron ballasts for HPL, HPI (Plus) and SON-H lamps

Product data

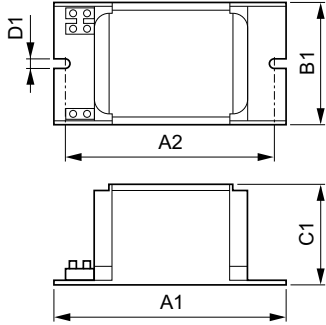
General Information		Connector Type	
Application Code	K307-A2		Screw
Design	BC2-160	System characteristics	
Lamp Type	HPL/HPI	Capacitor	25 μ F/28 μ F/250V (230V/240V)
Number of Lamps	1 piece/unit	Rated Ballast-Lamp Power	400 W
		Recommended Ignitor	no ignitor for HPL-N for HPI-T ignitor SI51 (913619519966)
Operating and Electrical		Temperature	
Input Voltage	230 V (default) or 240 V	T-Storage (Max)	130 °C
Input Frequency	50 Hz	T-Storage (Min)	-30 °C
Power Factor 100% Load (Nom)	0.85	T-Winding (Max)	130 °C
Mains Voltage Performance (AC)	-8%+6%	Delta-T Normal Conditions	80/85 °C
Mains Voltage Safety (AC)	-10%-+10%	Approval and Application	
Input Current with PF Correction	2.15 A	Approval Marks	CE marking ENEC certificate
Input Current without PF Correction	3.25/3.4 A	Product Data	
Power Factor without PF Compensation (Nom)	0.55	Full product code	872790088703700
Power Losses (Nom)	25.8/27 W	Order product name	BHL 400 K307-A2 230/240V 50Hz BC2-160
Wiring		EAN/UPC - Product	8711500881595
Wire Striplength	7.0 mm		
Ballast Contact Wire Cross Section	1.00-2.50 mm ²		

HID-Basic BHL MK4 for HPL/HPI

Order code	913700278226
Numerator - Quantity Per Pack	1
Numerator - Packs per outer box	6
Material Nr. (12NC)	913700278226

Net Weight (Piece)	3.240 kg
--------------------	----------

Dimensional drawing



BHL 400 K307 230/240V 50Hz BC2-160

Product	D1	C1	A1	A2	B1
BHL 400 K307-A2 230/240V 50Hz BC2-160	6.2 mm	65.0 mm	160.0 mm	139.0 mm	76.0 mm

